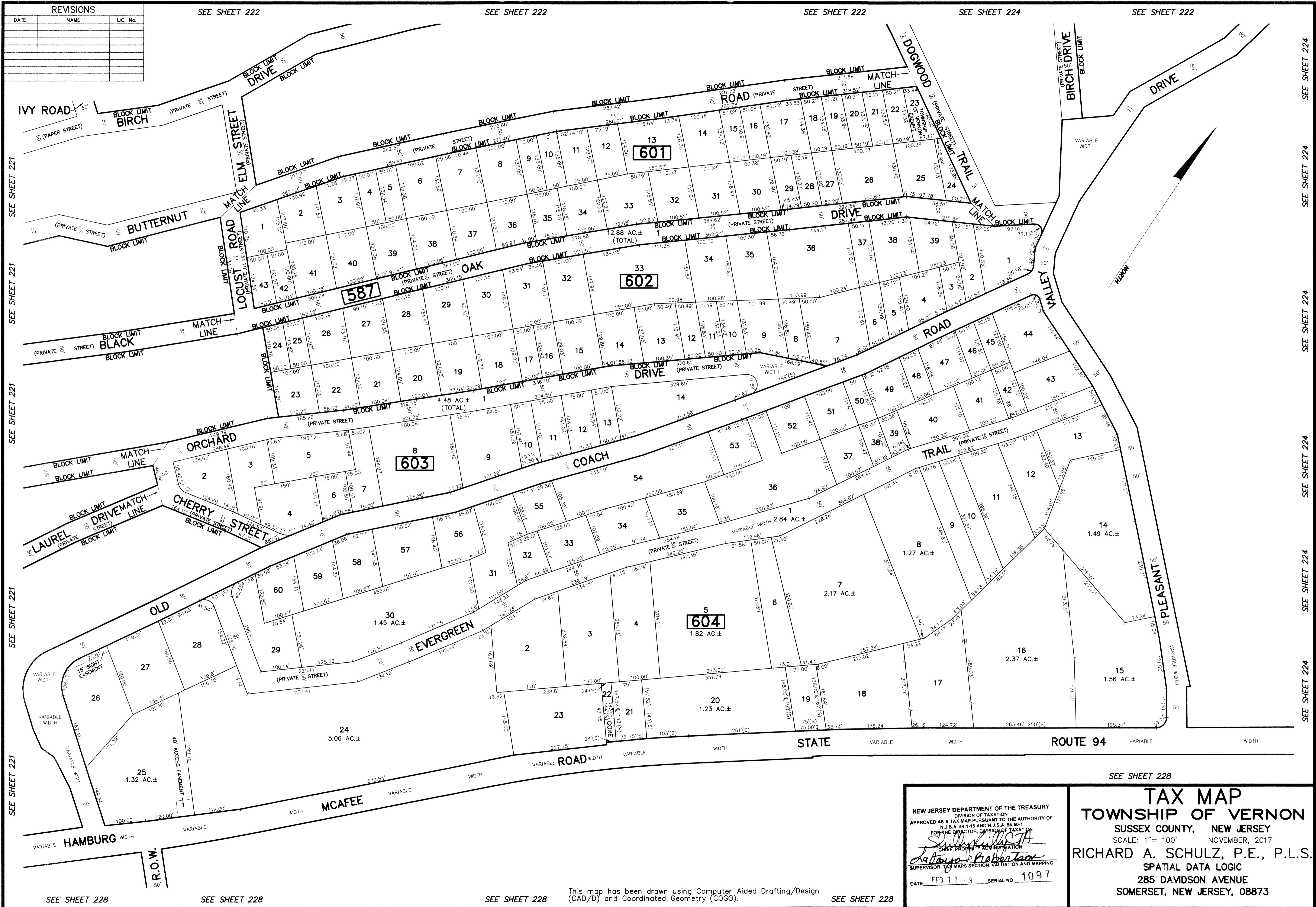


REVISIONS		
DATE	NAME	LIC. No.



SEE SHEET 222

SEE SHEET 222

SEE SHEET 222

SEE SHEET 224

SEE SHEET 222

SEE SHEET 221

SEE SHEET 221

SEE SHEET 221

SEE SHEET 221

SEE SHEET 221

SEE SHEET 228

SEE SHEET 228

SEE SHEET 228

SEE SHEET 228

This map has been drawn using Computer Aided Drafting/Design (CAD/D) and Coordinated Geometry (COGO).

NEW JERSEY DEPARTMENT OF THE TREASURY
 DIVISION OF TAXATION
 APPROVED AS A TAX MAP PURSUANT TO THE AUTHORITY OF
 N.J.S.A. 54-1.15 AND N.J.S.A. 54-50.1
 FOR THE DIRECTOR, DIVISION OF TAXATION
Richard A. Schulz
 CHIEF, PROPERTY ADMINISTRATION
Richard A. Schulz
 SUPERVISOR, MAPS SECTION, VALUATION AND MAPPING
 DATE FEB 11 2019 SERIAL NO. 1097

TAX MAP
TOWNSHIP OF VERNON
 SUSSEX COUNTY, NEW JERSEY
 SCALE: 1" = 100' NOVEMBER, 2017
 RICHARD A. SCHULZ, P.E., P.L.S.
 SPATIAL DATA LOGIC
 285 DAVIDSON AVENUE
 SOMERSET, NEW JERSEY, 08873

SEE SHEET 228

SEE SHEET 224

SEE SHEET 224

SEE SHEET 224

SEE SHEET 224

SEE SHEET 224

SEE SHEET 224