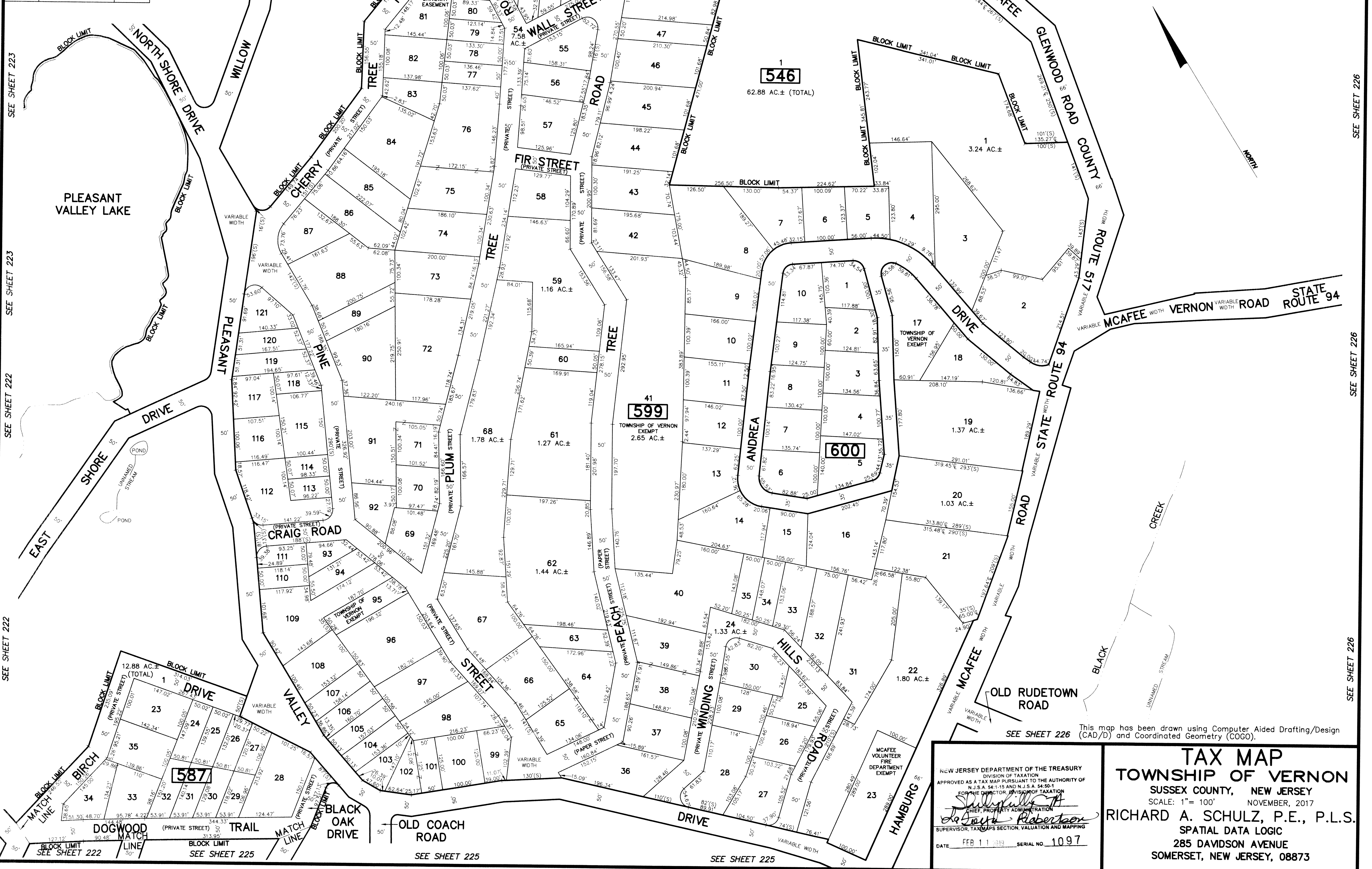


REVISIONS		
DATE	NAME	LIC. No.



SEE SHEET 223

SEE SHEET 223

SEE SHEET 222

SEE SHEET 222

SEE SHEET 222

SEE SHEET 223

SEE SHEET 223

SEE SHEET 223

SEE SHEET 223 SEE SHEET 208

SEE SHEET 208

SEE SHEET 211

SEE SHEET 226

SEE SHEET 226

SEE SHEET 226

SEE SHEET 226

This map has been drawn using Computer Aided Drafting/Design (CAD/D) and Coordinated Geometry (COGO).

NEW JERSEY DEPARTMENT OF THE TREASURY
 DIVISION OF TAXATION
 APPROVED AS A TAX MAP PURSUANT TO THE AUTHORITY OF
 N.J.S.A. 54:1-15 AND N.J.S.A. 54:50-1
 FOR THE DIRECTOR, DIVISION OF TAXATION
Richard A. Schulz
 CHIEF, PROPERTY ADMINISTRATION
Richard A. Schulz
 SUPERVISOR, TAX MAPS SECTION, VALUATION AND MAPPING
 DATE: FEB 11 2019 SERIAL NO. 1097

TAX MAP
TOWNSHIP OF VERNON
 SUSSEX COUNTY, NEW JERSEY
 SCALE: 1" = 100' NOVEMBER, 2017
RICHARD A. SCHULZ, P.E., P.L.S.
 SPATIAL DATA LOGIC
 285 DAVIDSON AVENUE
 SOMERSET, NEW JERSEY, 08873