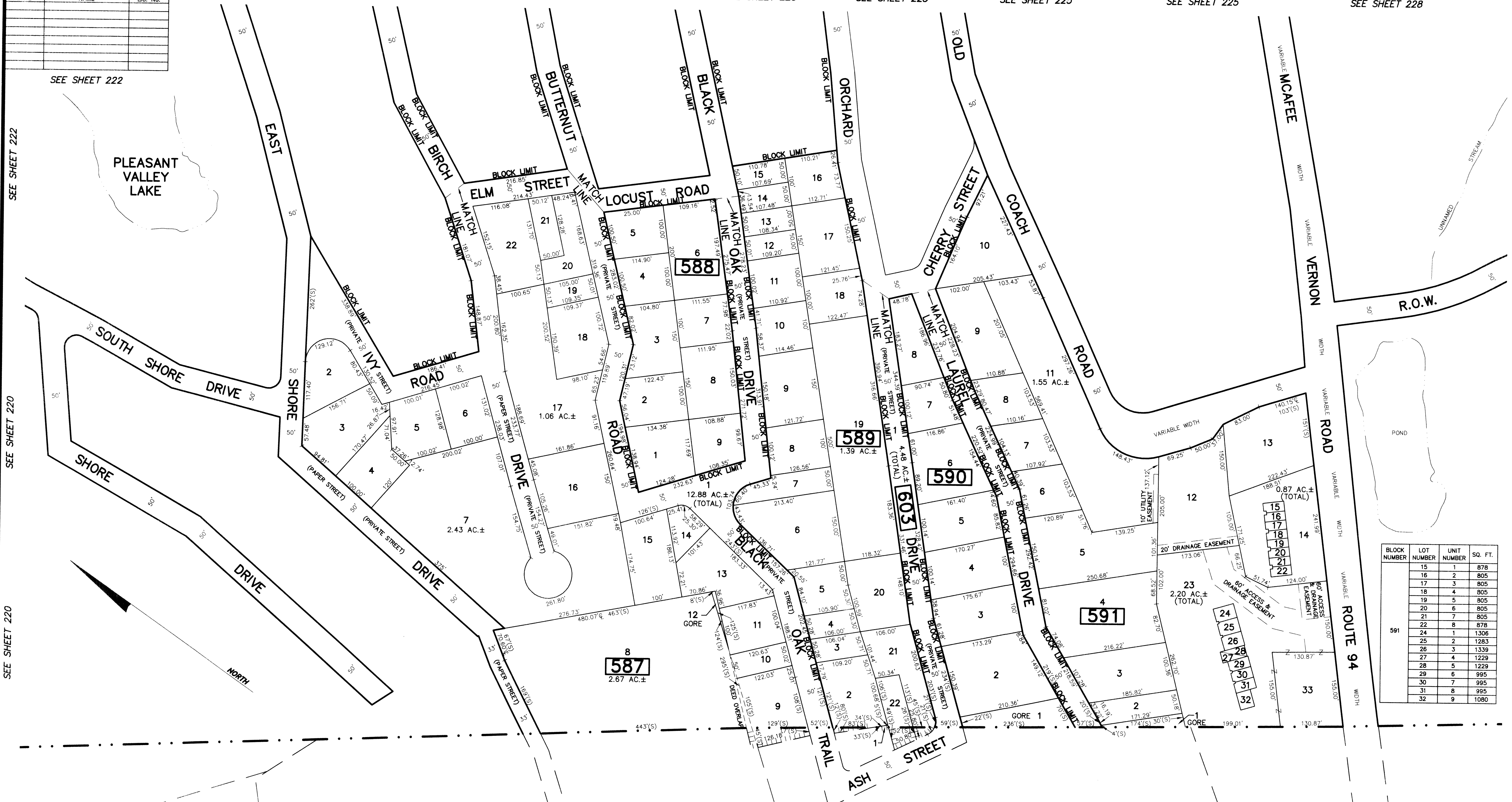


REVISIONS		
DATE	NAME	LIC. No.

SEE SHEET 222 SEE SHEET 222 SEE SHEET 225 SEE SHEET 225 SEE SHEET 225 SEE SHEET 225 SEE SHEET 225 SEE SHEET 228



SEE SHEET 222
SEE SHEET 220
SEE SHEET 220

SEE SHEET 228
SEE SHEET 228

BLOCK NUMBER	LOT NUMBER	UNIT NUMBER	SQ. FT.
591	15	1	878
	16	2	805
	17	3	805
	18	4	805
	19	5	805
	20	6	805
	21	7	805
	22	8	878
	24	1	1306
	25	2	1283
	26	3	1339
	27	4	1229
28	5	1229	
29	6	995	
30	7	995	
31	8	995	
32	9	1080	

DEED OVERLAP	BLOCK	LOT
	587	8
	587	9
	587	10
	587	11

THE OVERLAPPING LINES & DIMENSIONS SHOWN ARE PLOTTED IN ACCORDANCE WITH THE METES & BOUNDS DESCRIPTIONS APPEARING IN THE LAST DEED OF RECORD FOR EACH PARCEL & DO NOT PURPORT TO REPRESENT TITLE OR OWNERSHIP STATUS IN ANY MANNER. THESE SITUATIONS ARE SUBJECT TO SOLUTION BY THE PROPERTY OWNERS CONCERNED.

COUNTY OF SUSSEX
HARDYSTON TOWNSHIP

NOTE: FOR ALL TWO LEVEL CONDOMINIUM UNITS
ODD LOT NUMBERS ARE FIRST FLOOR UNITS AND
EVEN LOT NUMBERS ARE SECOND FLOOR UNITS.

NEW JERSEY DEPARTMENT OF THE TREASURY
DIVISION OF TAXATION
APPROVED AS A TAX MAP PURSUANT TO THE AUTHORITY OF
N.J.S.A. 54:1-15 AND N.J.S.A. 54:50-1
FOR THE DIRECTOR, DIVISION OF TAXATION
Richard A. Schulz
CHIEF, PROPERTY ADMINISTRATION
Robert A. ...
SUPERVISOR, TAX MAPS SECTION, VALUATION AND MAPPING
DATE FEB 11 2019 SERIAL NO. 1097

TAX MAP
TOWNSHIP OF VERNON
SUSSEX COUNTY, NEW JERSEY
SCALE: 1" = 100' NOVEMBER, 2017
RICHARD A. SCHULZ, P.E., P.L.S.
SPATIAL DATA LOGIC
285 DAVIDSON AVENUE
SOMERSET, NEW JERSEY, 08873

This map has been drawn using Computer Aided Drafting/Design (CAD/D) and Coordinated Geometry (COGO).