

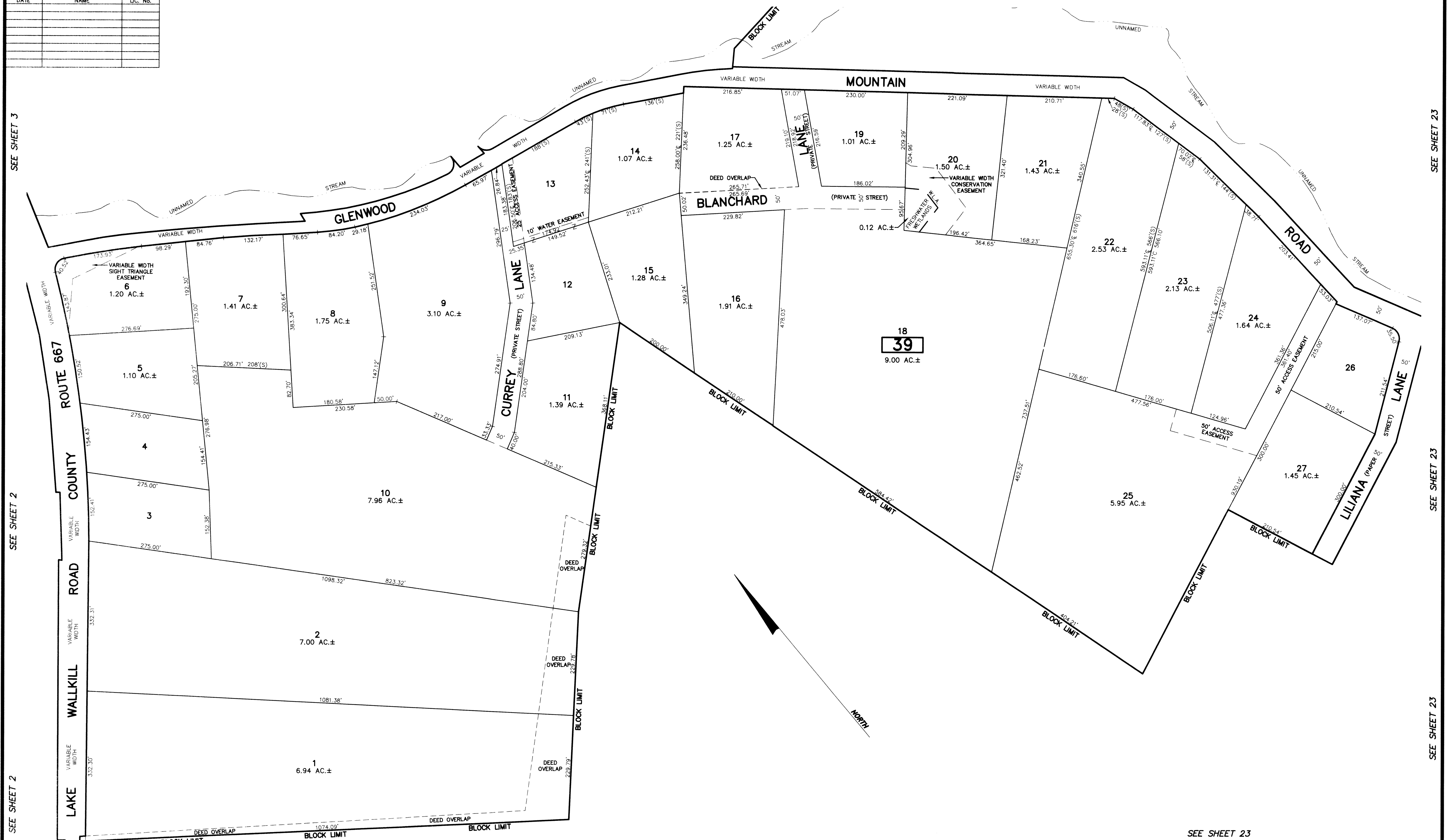
REVISIONS		
DATE	NAME	L.C. No.

SEE SHEET 3

SEE SHEET 3

SEE SHEET 23

SEE SHEET 23



SEE SHEET 3

SEE SHEET 2

SEE SHEET 2

SEE SHEET 23

SEE SHEET 23

SEE SHEET 23

SEE SHEET 23

SEE SHEET 23

SEE SHEET 23

THE OVERLAPPING LINES & DIMENSIONS SHOWN ARE PLOTTED IN ACCORDANCE WITH THE METES & BOUNDS DESCRIPTIONS APPEARING THE LAST DEED OF RECORD FOR EACH PARCEL & DO NOT PURPORT TO REPRESENT TITLE OR OWNERSHIP STATUS IN ANY MANNER. THESE SITUATIONS ARE SUBJECT TO SOLUTION BY THE PROPERTY OWNERS CONCERNED.

This map has been drawn using Computer Aided Drafting/Design (CAD/D) and Coordinated Geometry (COGO).

DEED OVERLAP	
BLOCK	LOT
39	1
39	2
39	10
39	17
39	18
40	1

NEW JERSEY DEPARTMENT OF THE TREASURY
 DIVISION OF TAXATION
 APPROVED AS A TAX MAP BY THE AUTHORITY OF
 RICHARD A. SCHULZ, P.E., P.L.S.
 FOR THE DIRECTOR, DIVISION OF TAXATION
Richard A. Schulz, P.E., P.L.S.
 CHIEF, PROPERTY ADMINISTRATION
Richard A. Schulz, P.E., P.L.S.
 SUPERVISOR, TAX MAPS, VALUATION AND MAPPING
 DATE: FEB 11 2019 SERIAL NO. 1097

TAX MAP
TOWNSHIP OF VERNON
 SUSSEX COUNTY, NEW JERSEY
 SCALE: 1" = 100' NOVEMBER, 2017
RICHARD A. SCHULZ, P.E., P.L.S.
 SPATIAL DATA LOGIC
 285 DAVIDSON AVENUE
 SOMERSET, NEW JERSEY, 08873