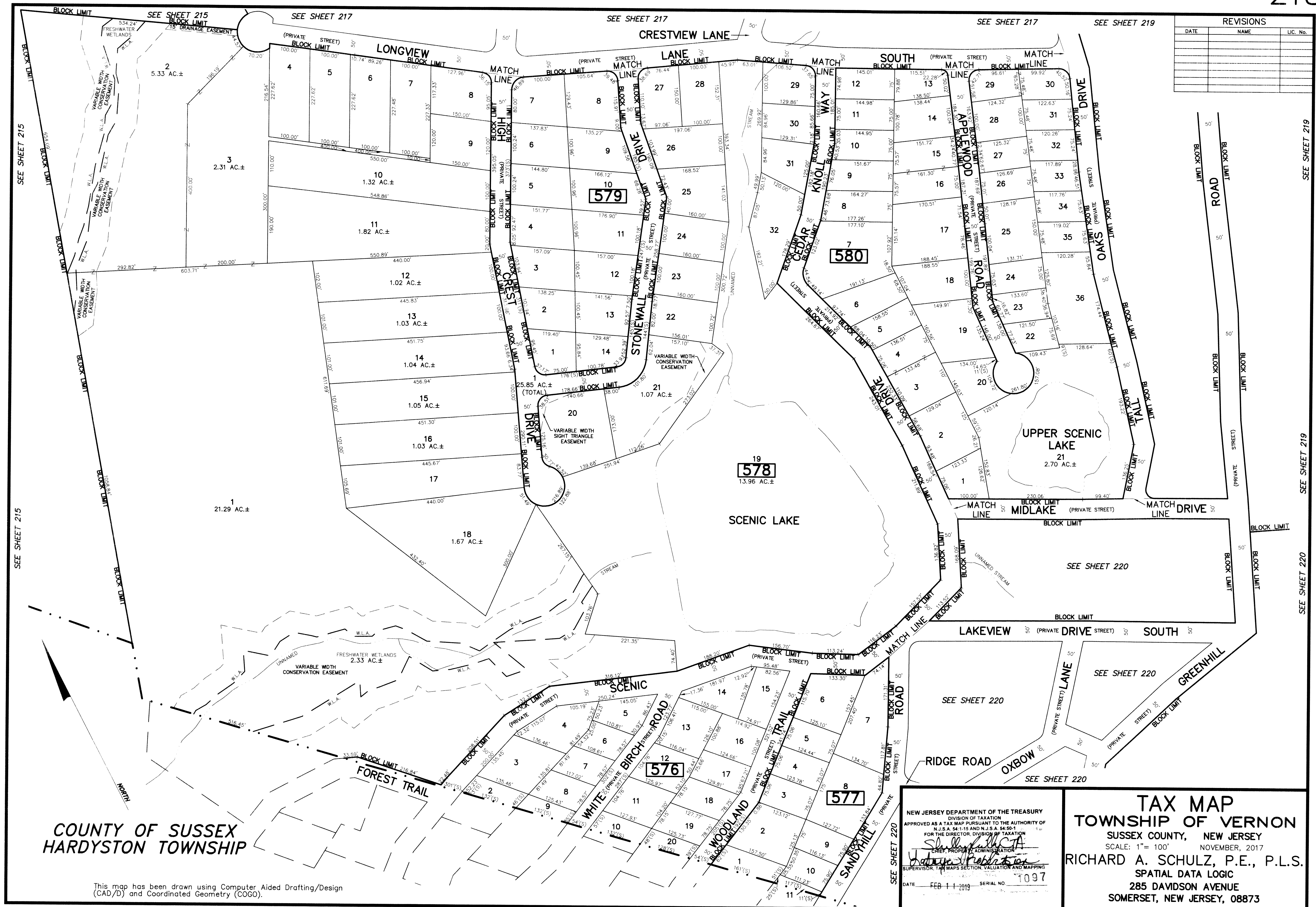


REVISIONS		
DATE	NAME	LIC. No.



COUNTY OF SUSSEX
HARDYSTON TOWNSHIP

This map has been drawn using Computer Aided Drafting/Design (CAD/D) and Coordinated Geometry (COGO).

NEW JERSEY DEPARTMENT OF THE TREASURY
DIVISION OF TAXATION
APPROVED AS A TAX MAP PURSUANT TO THE AUTHORITY OF
N.J.S.A. 54:1-15 AND N.J.S.A. 54:50-1
FOR THE DIRECTOR, DIVISION OF TAXATION
Shirley A. ...
CHIEF, PROPERTY ADMINISTRATION
John ...
SUPERVISOR, TAX MAPS SECTION, VALUATION AND MAPPING
DATE FEB 11 2019 SERIAL NO. 1097

TAX MAP
TOWNSHIP OF VERNON
SUSSEX COUNTY, NEW JERSEY
SCALE: 1" = 100' NOVEMBER, 2017
RICHARD A. SCHULZ, P.E., P.L.S.
SPATIAL DATA LOGIC
285 DAVIDSON AVENUE
SOMERSET, NEW JERSEY, 08873

SEE SHEET 215

SEE SHEET 219

SEE SHEET 220

SEE SHEET 220

SEE SHEET 220

SEE SHEET 220

SEE SHEET 220

SEE SHEET 220

SEE SHEET 220

SEE SHEET 220

SEE SHEET 220

SEE SHEET 220

SEE SHEET 220

SEE SHEET 220

SEE SHEET 220

SEE SHEET 220

SEE SHEET 220

SEE SHEET 220