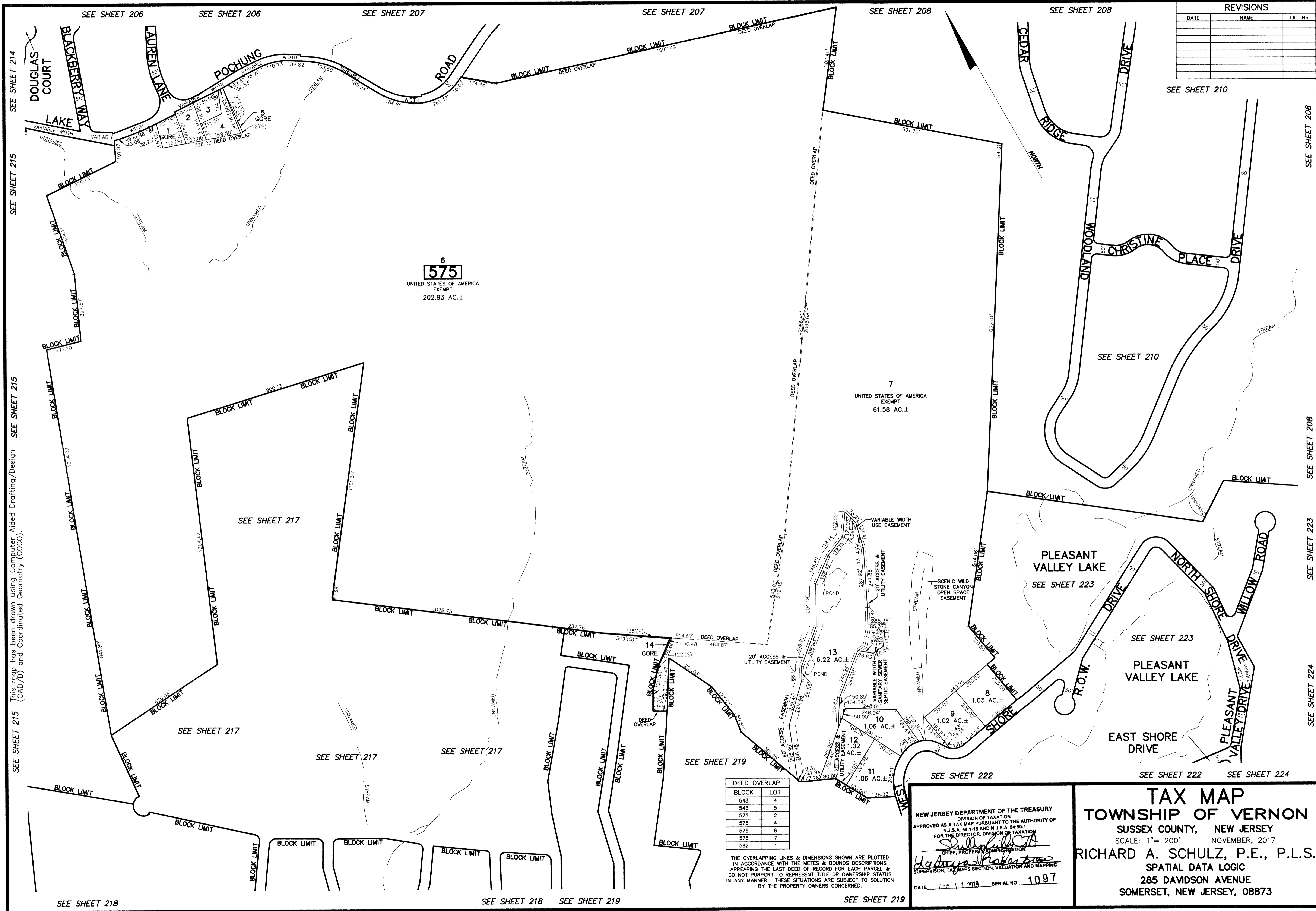


REVISIONS		
DATE	NAME	LIC. No.



**6**  
**575**  
 UNITED STATES OF AMERICA  
 EXEMPT  
 202.93 AC.±

**7**  
 UNITED STATES OF AMERICA  
 EXEMPT  
 61.58 AC.±

BLOCK	LOT
543	4
543	5
575	2
575	4
575	6
575	7
582	1

THE OVERLAPPING LINES & DIMENSIONS SHOWN ARE PLOTTED IN ACCORDANCE WITH THE METES & BOUNDS DESCRIPTIONS APPEARING IN THE LAST DEED OF RECORD FOR EACH PARCEL & DO NOT PURPORT TO REPRESENT TITLE OR OWNERSHIP STATUS IN ANY MANNER. THESE SITUATIONS ARE SUBJECT TO SOLUTION BY THE PROPERTY OWNERS CONCERNED.

NEW JERSEY DEPARTMENT OF THE TREASURY  
 DIVISION OF TAXATION  
 APPROVED AS A TAX MAP PURSUANT TO THE AUTHORITY OF  
 N.J.S.A. 54:1-15 AND N.J.S.A. 54:50-1  
 FOR THE DIRECTOR, DIVISION OF TAXATION  
*[Signature]*  
 CHIEF, PROPERTY ADMINISTRATION  
*[Signature]*  
 SUPERVISOR, TAX MAPS SECTION, VALUATION AND MAPPING  
 DATE 11/1/2019 SERIAL NO. 1097

**TAX MAP**  
**TOWNSHIP OF VERNON**  
 SUSSEX COUNTY, NEW JERSEY  
 SCALE: 1"= 200' NOVEMBER, 2017  
**RICHARD A. SCHULZ, P.E., P.L.S.**  
 SPATIAL DATA LOGIC  
 285 DAVIDSON AVENUE  
 SOMERSET, NEW JERSEY, 08873

SEE SHEET 215 This map has been drawn using Computer Aided Drafting/Design (CAD/D) and Coordinated Geometry (COGO). SEE SHEET 215

SEE SHEET 214

SEE SHEET 215

SEE SHEET 215

SEE SHEET 215

SEE SHEET 215

SEE SHEET 218

SEE SHEET 206

SEE SHEET 206

SEE SHEET 207

SEE SHEET 207

SEE SHEET 208

SEE SHEET 208

SEE SHEET 210

SEE SHEET 208

SEE SHEET 208

SEE SHEET 223

SEE SHEET 224

SEE SHEET 218

SEE SHEET 219

SEE SHEET 219