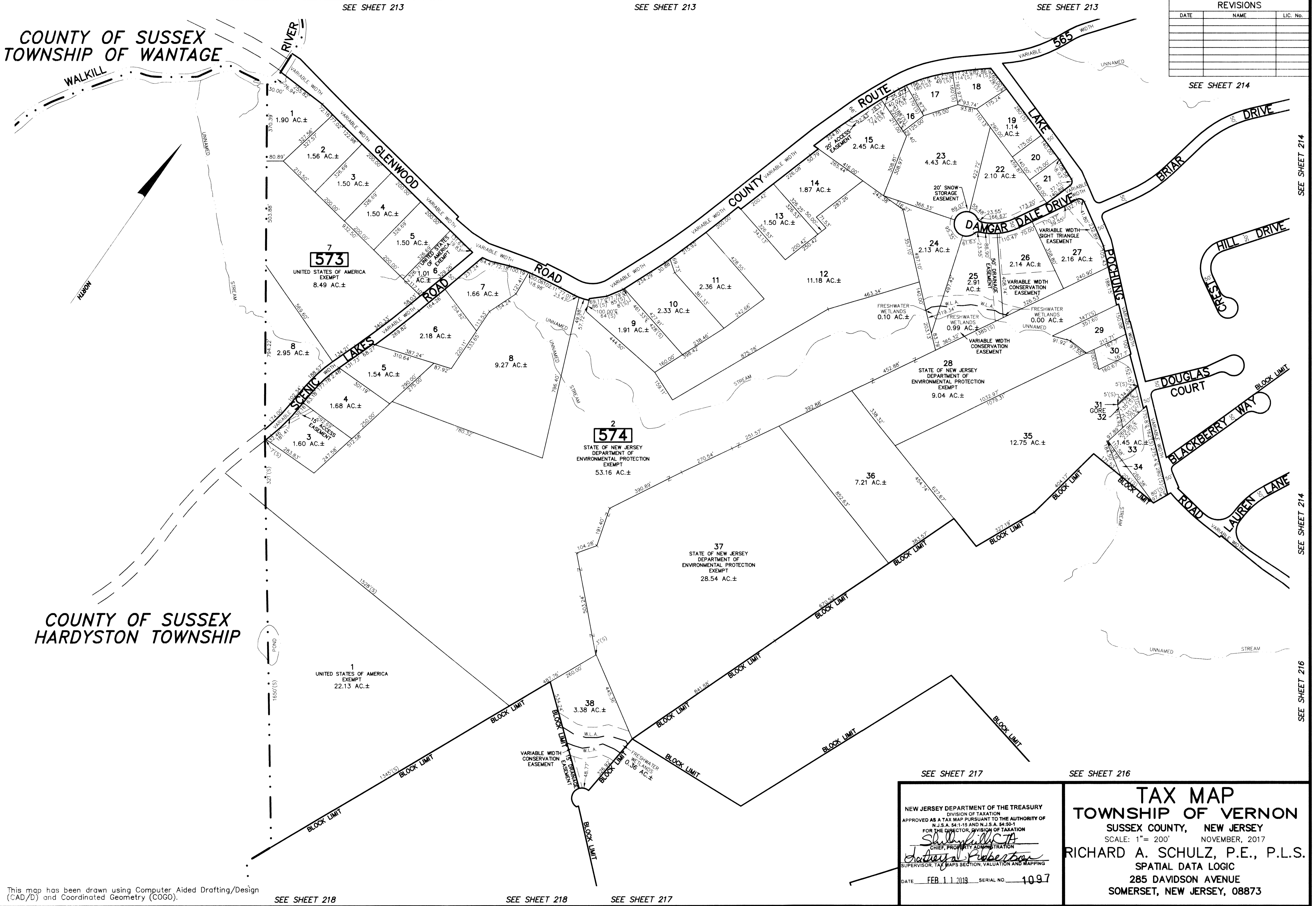


REVISIONS		
DATE	NAME	LIC. No.

SEE SHEET 214



COUNTY OF SUSSEX
TOWNSHIP OF WANTAGE

COUNTY OF SUSSEX
HARDYSTON TOWNSHIP

This map has been drawn using Computer Aided Drafting/Design (CAD/D) and Coordinated Geometry (COGO).

SEE SHEET 218

SEE SHEET 218

SEE SHEET 217

SEE SHEET 217

SEE SHEET 216

NEW JERSEY DEPARTMENT OF THE TREASURY
DIVISION OF TAXATION
APPROVED AS A TAX MAP PURSUANT TO THE AUTHORITY OF
N.J.S.A. 54:1-5 AND N.J.S.A. 54:50-1
FOR THE DIRECTOR, DIVISION OF TAXATION

Shelly Hill
CHIEF, PROPERTY ADMINISTRATION

Richard A. Schulz
SUPERVISOR, TAX MAPS SECTION, VALUATION AND MAPPING

DATE: FEB 11 2019 SERIAL NO. 1097

TAX MAP
TOWNSHIP OF VERNON
SUSSEX COUNTY, NEW JERSEY
SCALE: 1" = 200' NOVEMBER, 2017
RICHARD A. SCHULZ, P.E., P.L.S.
SPATIAL DATA LOGIC
285 DAVIDSON AVENUE
SOMERSET, NEW JERSEY, 08873