

REVISIONS		
DATE	NAME	LIC. No.

SEE SHEET 215

SEE SHEET 215

SEE SHEET 215

SEE SHEET 213

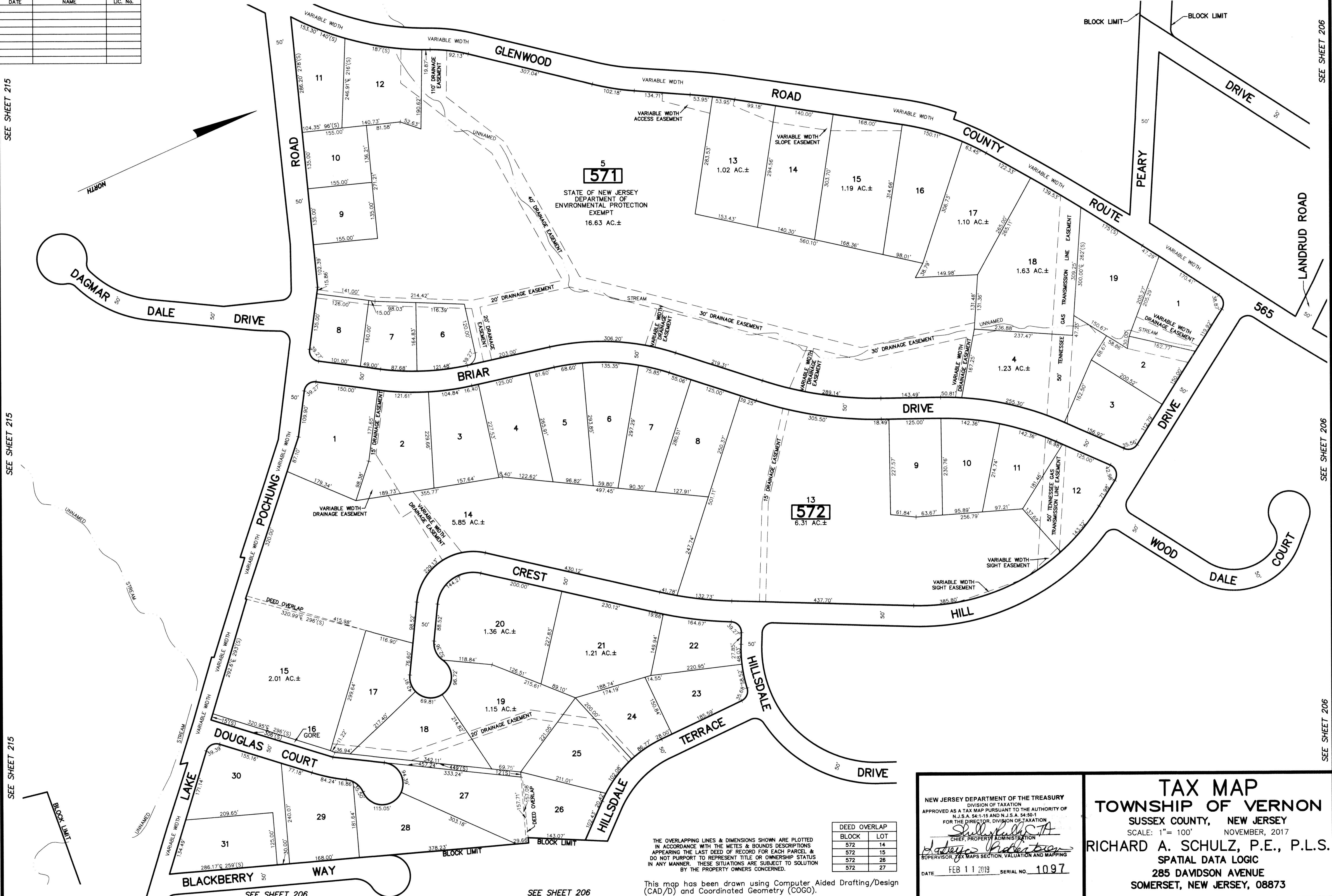
SEE SHEET 213

SEE SHEET 213

SEE SHEET 206

SEE SHEET 206

SEE SHEET 206



SEE SHEET 206

SEE SHEET 206

THE OVERLAPPING LINES & DIMENSIONS SHOWN ARE PLOTTED IN ACCORDANCE WITH THE METES & BOUNDS DESCRIPTIONS APPEARING IN THE LAST DEED OF RECORD FOR EACH PARCEL & DO NOT PURPORT TO REPRESENT TITLE OR OWNERSHIP STATUS IN ANY MANNER. THESE SITUATIONS ARE SUBJECT TO SOLUTION BY THE PROPERTY OWNERS CONCERNED.

This map has been drawn using Computer Aided Drafting/Design (CAD/D) and Coordinated Geometry (COGO).

DEED OVERLAP	
BLOCK	LOT
572	14
572	15
572	26
572	27

NEW JERSEY DEPARTMENT OF THE TREASURY  
 DIVISION OF TAXATION  
 APPROVED AS A TAX MAP PURSUANT TO THE AUTHORITY OF  
 N.J.S.A. 54:1-15 AND N.J.S.A. 54:50-1  
 FOR THE DIRECTOR, DIVISION OF TAXATION  
*Shelly Kulis, A*  
 CHIEF, PROPERTY ADMINISTRATION  
*Richard A. Schulz, P.E., P.L.S.*  
 SUPERVISOR, TAX MAPS SECTION, VALUATION AND MAPPING  
 DATE: FEB 11 2019 SERIAL NO. 1097

**TAX MAP**  
**TOWNSHIP OF VERNON**  
 SUSSEX COUNTY, NEW JERSEY  
 SCALE: 1" = 100' NOVEMBER, 2017  
**RICHARD A. SCHULZ, P.E., P.L.S.**  
 SPATIAL DATA LOGIC  
 285 DAVIDSON AVENUE  
 SOMERSET, NEW JERSEY, 08873