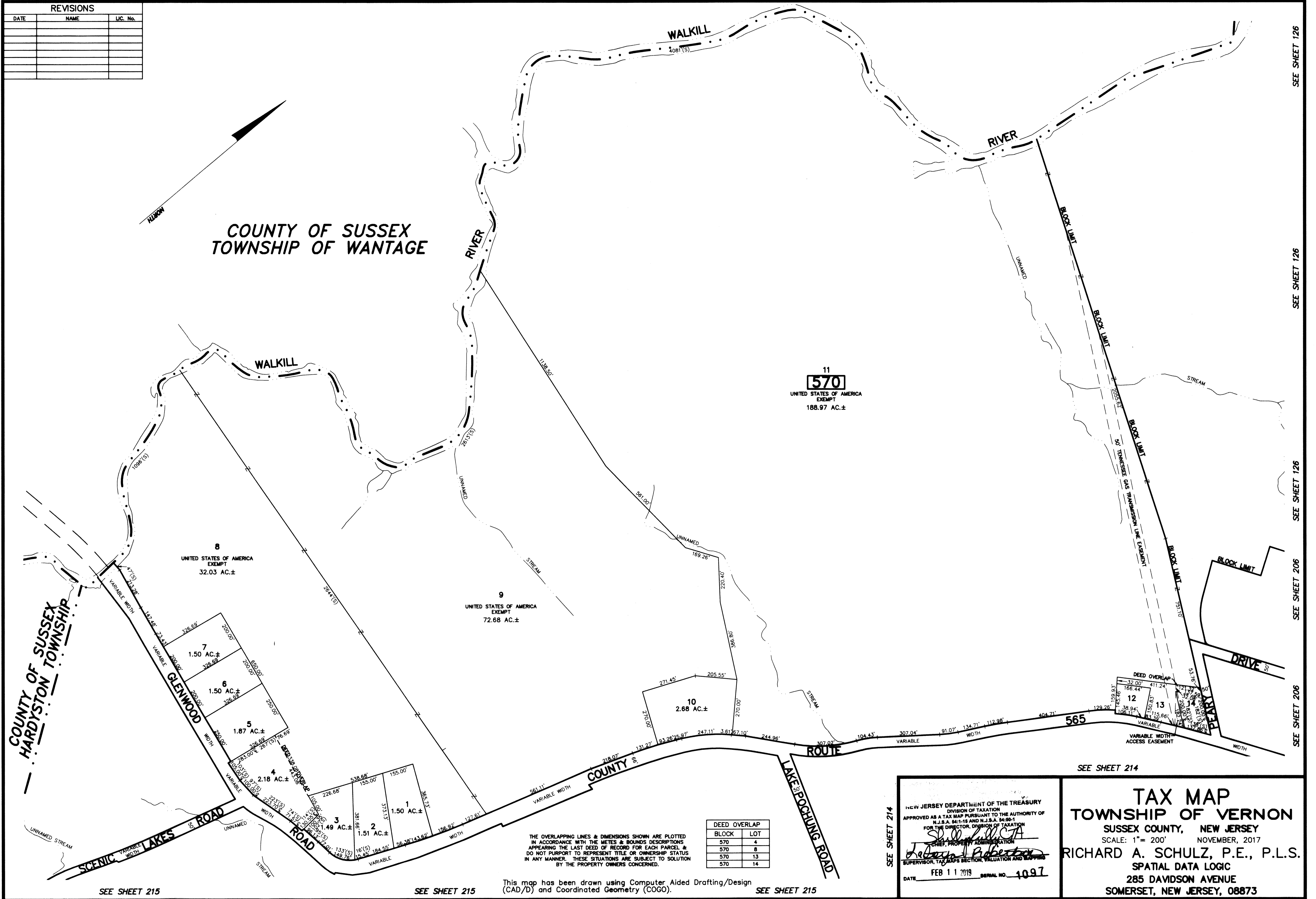


REVISIONS		
DATE	NAME	LIC. No.



COUNTY OF SUSSEX  
TOWNSHIP OF WANTAGE

11  
**570**  
UNITED STATES OF AMERICA  
EXEMPT  
188.97 AC.±

8  
UNITED STATES OF AMERICA  
EXEMPT  
32.03 AC.±

9  
UNITED STATES OF AMERICA  
EXEMPT  
72.68 AC.±

10  
2.68 AC.±

DEED OVERLAP  
12  
13

COUNTY OF SUSSEX  
HARDYSTON TOWNSHIP

GLENWOOD ROAD  
LAKES ROAD

THE OVERLAPPING LINES & DIMENSIONS SHOWN ARE PLOTTED IN ACCORDANCE WITH THE METES & BOUNDS DESCRIPTIONS APPEARING THE LAST DEED OF RECORD FOR EACH PARCEL & DO NOT PURPORT TO REPRESENT TITLE OR OWNERSHIP STATUS IN ANY MANNER. THESE SITUATIONS ARE SUBJECT TO SOLUTION BY THE PROPERTY OWNERS CONCERNED.

BLOCK	LOT
570	4
570	8
570	13
570	14

This map has been drawn using Computer Aided Drafting/Design (CAD/D) and Coordinated Geometry (COGO). SEE SHEET 215

NEW JERSEY DEPARTMENT OF THE TREASURY  
DIVISION OF TAXATION  
APPROVED AS A TAX MAP PURSUANT TO THE AUTHORITY OF N.J.S.A. 54:1-18 AND N.J.S.A. 54:9B-1  
FOR THE DIRECTOR, DIVISION OF TAXATION  
*Richard A. Schulz*  
CHIEF, PROPERTY ADMINISTRATION  
SUPERVISOR, TAX MAPS SECTION, VALUATION AND SERVICES  
DATE: FEB 11 2019 SERIAL NO. 4097

**TAX MAP**  
**TOWNSHIP OF VERNON**  
SUSSEX COUNTY, NEW JERSEY  
SCALE: 1" = 200' NOVEMBER, 2017  
RICHARD A. SCHULZ, P.E., P.L.S.  
SPATIAL DATA LOGIC  
285 DAVIDSON AVENUE  
SOMERSET, NEW JERSEY, 08873

SEE SHEET 126  
SEE SHEET 126  
SEE SHEET 206  
SEE SHEET 206  
SEE SHEET 206

SEE SHEET 215

SEE SHEET 215

SEE SHEET 215