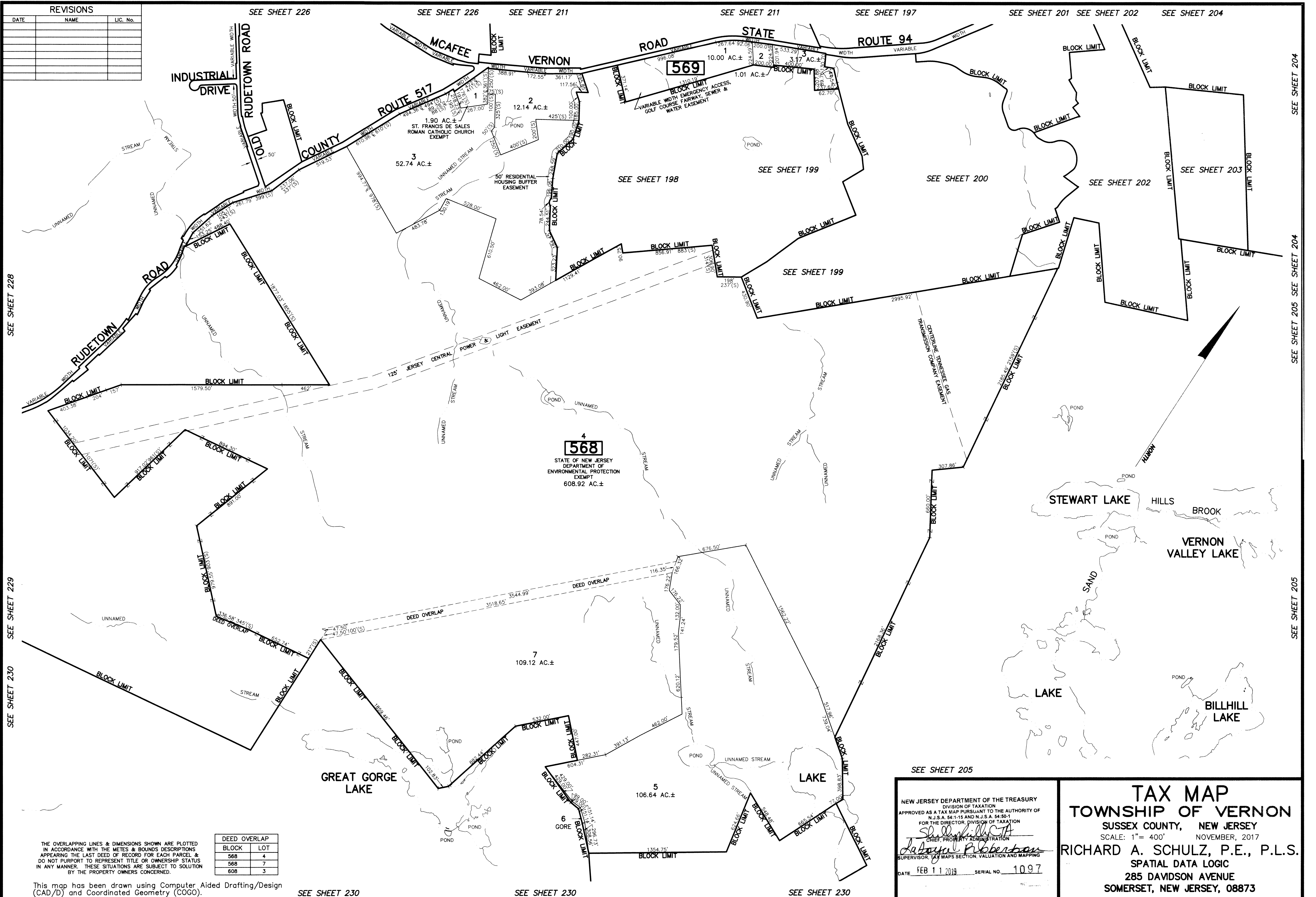


REVISIONS		
DATE	NAME	LIC. No.



SEE SHEET 228

SEE SHEET 229

SEE SHEET 230

SEE SHEET 226

SEE SHEET 226

SEE SHEET 211

SEE SHEET 211

SEE SHEET 197

SEE SHEET 201

SEE SHEET 202

SEE SHEET 204

SEE SHEET 204

SEE SHEET 205

SEE SHEET 205

THE OVERLAPPING LINES & DIMENSIONS SHOWN ARE PLOTTED IN ACCORDANCE WITH THE METES & BOUNDS DESCRIPTIONS APPEARING THE LAST DEED OF RECORD FOR EACH PARCEL & DO NOT PURPORT TO REPRESENT TITLE OR OWNERSHIP STATUS IN ANY MANNER. THESE SITUATIONS ARE SUBJECT TO SOLUTION BY THE PROPERTY OWNERS CONCERNED.

DEED OVERLAP	
BLOCK	LOT
568	4
568	7
608	3

This map has been drawn using Computer Aided Drafting/Design (CAD/D) and Coordinated Geometry (COGO).

SEE SHEET 230

SEE SHEET 230

SEE SHEET 230

NEW JERSEY DEPARTMENT OF THE TREASURY  
 DIVISION OF TAXATION  
 APPROVED AS A TAX MAP PURSUANT TO THE AUTHORITY OF  
 N.J.S.A. 54:1-15 AND N.J.S.A. 54:50-1  
 FOR THE DIRECTOR, DIVISION OF TAXATION  
*Shirley K. Hill*  
 CHIEF, PROPERTY ADMINISTRATION  
*Richard A. Schulz*  
 SUPERVISOR, TAX MAPS SECTION, VALUATION AND MAPPING  
 DATE FEB 11 2019 SERIAL NO. 1097

**TAX MAP**  
**TOWNSHIP OF VERNON**  
 SUSSEX COUNTY, NEW JERSEY  
 SCALE: 1" = 400' NOVEMBER, 2017  
**RICHARD A. SCHULZ, P.E., P.L.S.**  
 SPATIAL DATA LOGIC  
 285 DAVIDSON AVENUE  
 SOMERSET, NEW JERSEY, 08873