

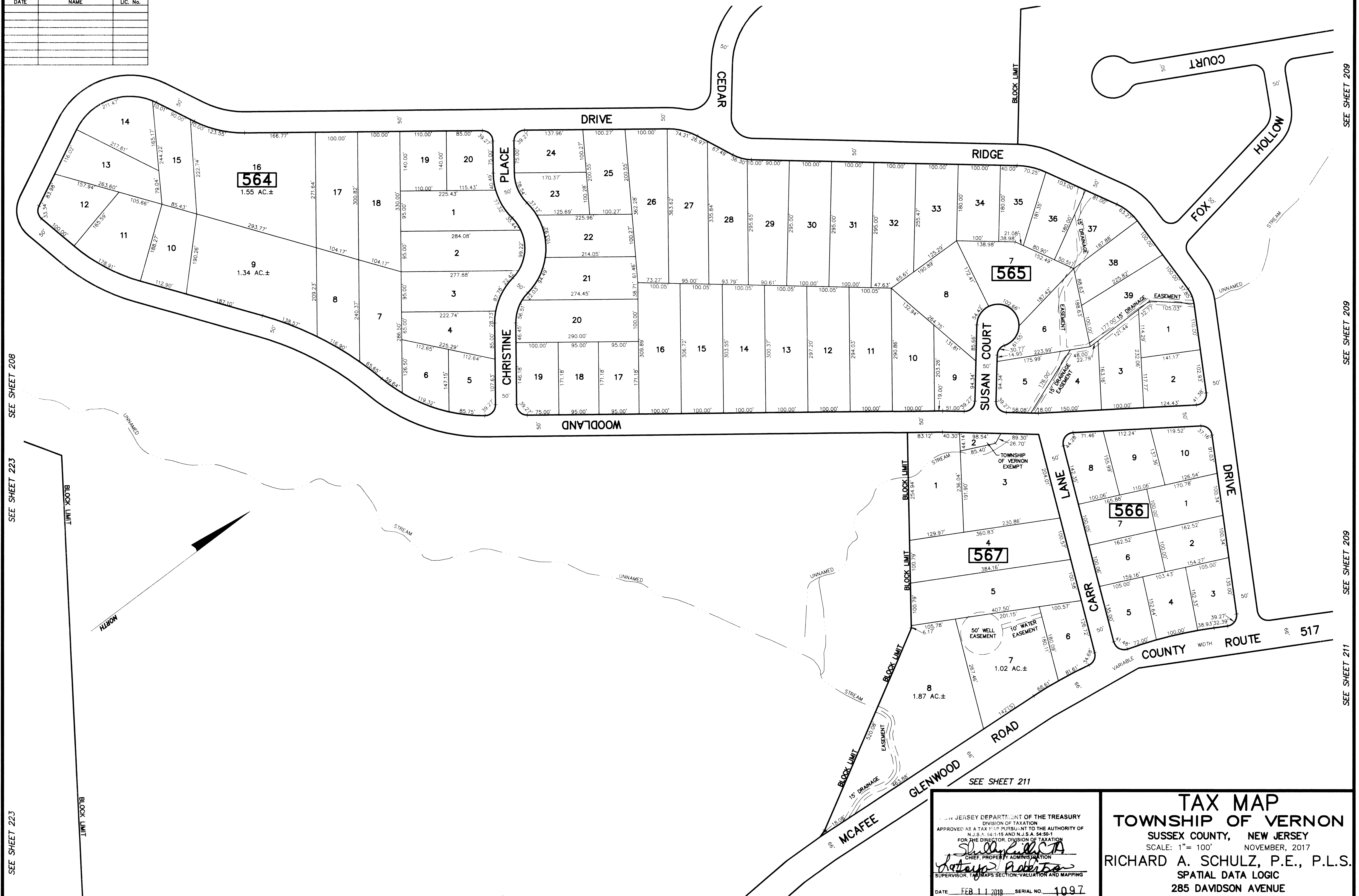
REVISIONS		
DATE	NAME	LIC. No.

SEE SHEET 208

SEE SHEET 208

SEE SHEET 208

SEE SHEET 209



SEE SHEET 223

SEE SHEET 208

This map has been drawn using Computer Aided Drafting/Design (CAD/D) and Coordinated Geometry (COGO).

SEE SHEET 208

SEE SHEET 211

NEW JERSEY DEPARTMENT OF THE TREASURY  
 DIVISION OF TAXATION  
 APPROVED AS A TAX MAP PURSUANT TO THE AUTHORITY OF  
 N.J.S.A. 54:15 AND N.J.S.A. 54:50.4  
 FOR THE DIRECTOR, DIVISION OF TAXATION  
*Shelly K. ...*  
 CHIEF PROPERTY ADMINISTRATION  
*Richard A. Schulz*  
 SUPERVISOR, TAX MAPS SECTION, VALUATION AND MAPPING  
 DATE FEB 11 2019 SERIAL NO. 1097

**TAX MAP**  
**TOWNSHIP OF VERNON**  
 SUSSEX COUNTY, NEW JERSEY  
 SCALE: 1" = 100' NOVEMBER, 2017  
 RICHARD A. SCHULZ, P.E., P.L.S.  
 SPATIAL DATA LOGIC  
 285 DAVIDSON AVENUE  
 SOMERSET, NEW JERSEY, 08873