

REVISIONS		
DATE	NAME	LIC. No.

SEE SHEET 213

SEE SHEET 126

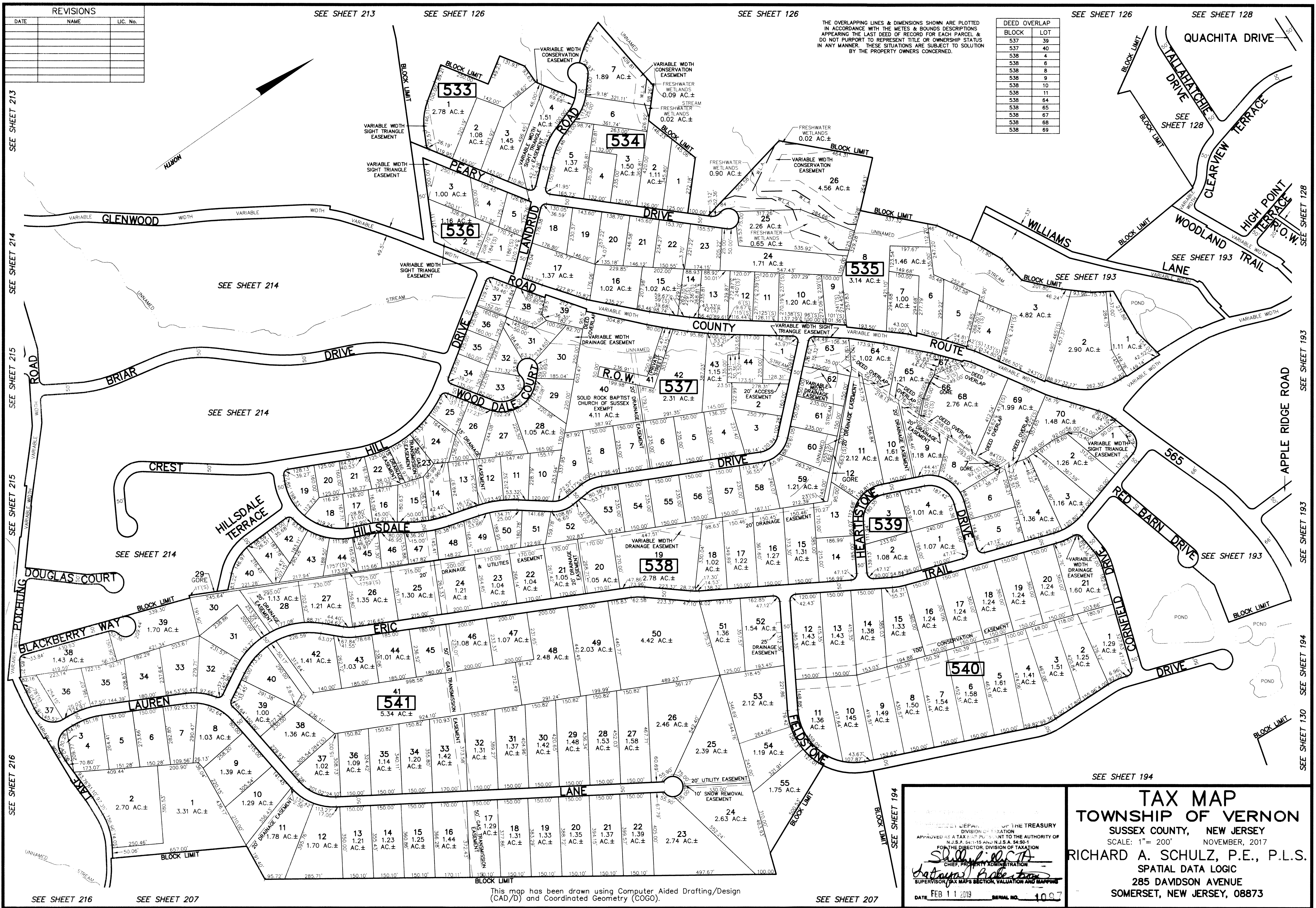
SEE SHEET 126

SEE SHEET 126

SEE SHEET 128

THE OVERLAPPING LINES & DIMENSIONS SHOWN ARE PLOTTED IN ACCORDANCE WITH THE METES & BOUNDS DESCRIPTIONS APPEARING THE LAST DEED OF RECORD FOR EACH PARCEL & DO NOT PURPORT TO REPRESENT TITLE OR OWNERSHIP STATUS IN ANY MANNER. THESE SITUATIONS ARE SUBJECT TO SOLUTION BY THE PROPERTY OWNERS CONCERNED.

BLOCK	LOT
537	39
537	40
538	4
538	6
538	8
538	9
538	10
538	11
538	64
538	65
538	67
538	68
538	69



SEE SHEET 214

SEE SHEET 214

This map has been drawn using Computer Aided Drafting/Design (CAD/D) and Coordinated Geometry (COGO).

SEE SHEET 207

SEE SHEET 194

STATE OF NEW JERSEY
 DEPARTMENT OF THE TREASURY
 DIVISION OF TAXATION
 APPROVED AS A TAX MAP PURSUANT TO THE AUTHORITY OF
 N.J.S.A. 54:1-15 AND N.J.S.A. 54:5-9
 FOR THE DIRECTOR, DIVISION OF TAXATION
Richard A. Schulz, P.E., P.L.S.
 CHIEF, PROPERTY ADMINISTRATION
 SUPERVISOR, TAX MAPS SECTION, VALUATION AND MAPPING
 DATE: FEB 11 2019 SERIAL NO. 1007

TAX MAP
TOWNSHIP OF VERNON
 SUSSEX COUNTY, NEW JERSEY
 SCALE: 1" = 200' NOVEMBER, 2017
RICHARD A. SCHULZ, P.E., P.L.S.
 SPATIAL DATA LOGIC
 285 DAVIDSON AVENUE
 SOMERSET, NEW JERSEY, 08873