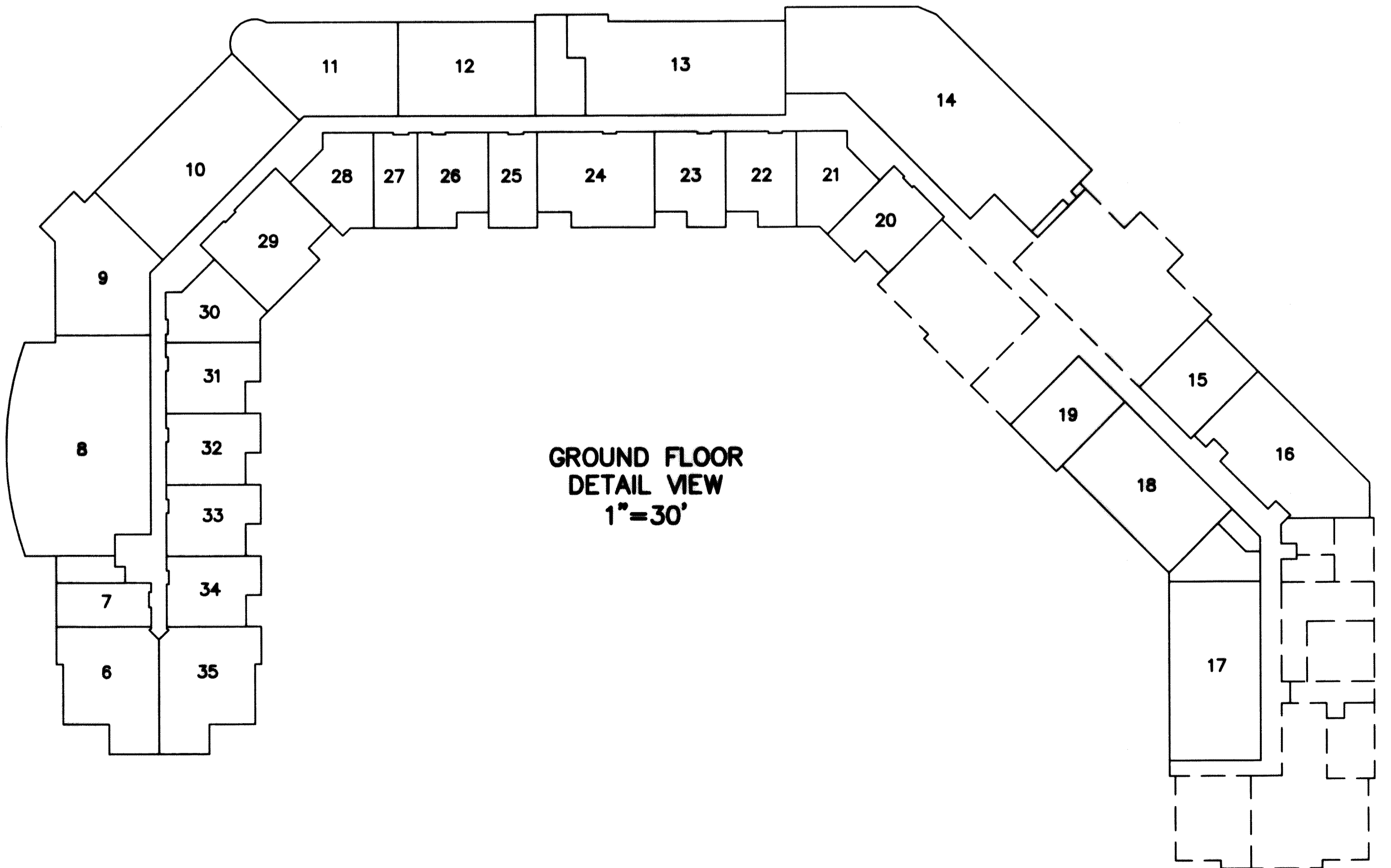
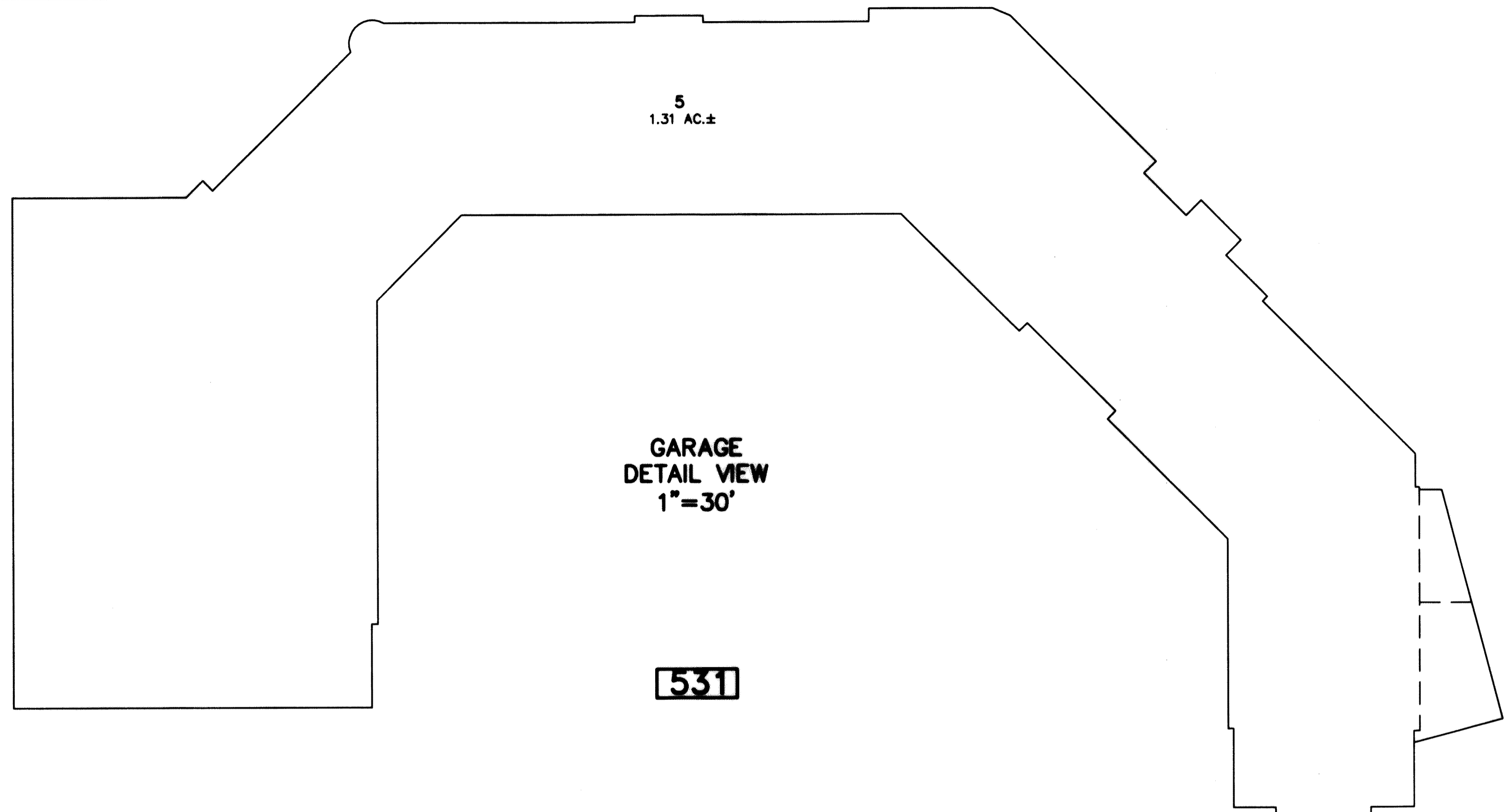


REVISIONS		
DATE	NAME	LIC. No.



BLOCK NUMBER	LOT NUMBER	UNIT NUMBER	SQ. FT.
531	6	169	1071
	7	167	406
	8	13	2752
	9	12	1158
	10	11	1720
	11	10	1301
	12	9	1209
	13	8	1881
	14	7	3913
	15	1	651
	16	2	1519
	17	3	1527
	18	4	1257
	19	5	571
	20	118	600
	21	120	569
	22	122	600
	23	124	600
	24	128	1008
	25	128	406
	26	130	936
	27	132	406
	28	134	569
	29	136	936
	30	138	569
	31	140	600
	32	142	600
	33	144	600
	34	146	600
	35	148	1071

This map has been drawn using Computer Aided Drafting/Design (CAD/D) and Coordinated Geometry (COGO).

NEW JERSEY DEPARTMENT OF THE TREASURY
DIVISION OF TAXATION
APPROVED AS A TAX MAP PURSUANT TO THE AUTHORITY OF N.J.S.A. 54:15 AND N.J.S.A. 54:6-4
FOR THE DIRECTOR, DIVISION OF TAXATION
Richard A. Schulz
CHIEF, PROPERTY ADMINISTRATION
Robert...
SUPERVISOR, MAPS SECTION, VALUATION AND MAPPING
DATE: FEB 11 2019 SERIAL NO. 1097

**TAX MAP
TOWNSHIP OF VERNON**
SUSSEX COUNTY, NEW JERSEY
SCALE: AS SHOWN NOVEMBER, 2017
RICHARD A. SCHULZ, P.E., P.L.S.
SPATIAL DATA LOGIC
285 DAVIDSON AVENUE
SOMERSET, NEW JERSEY, 08873