

SEE SHEET 202

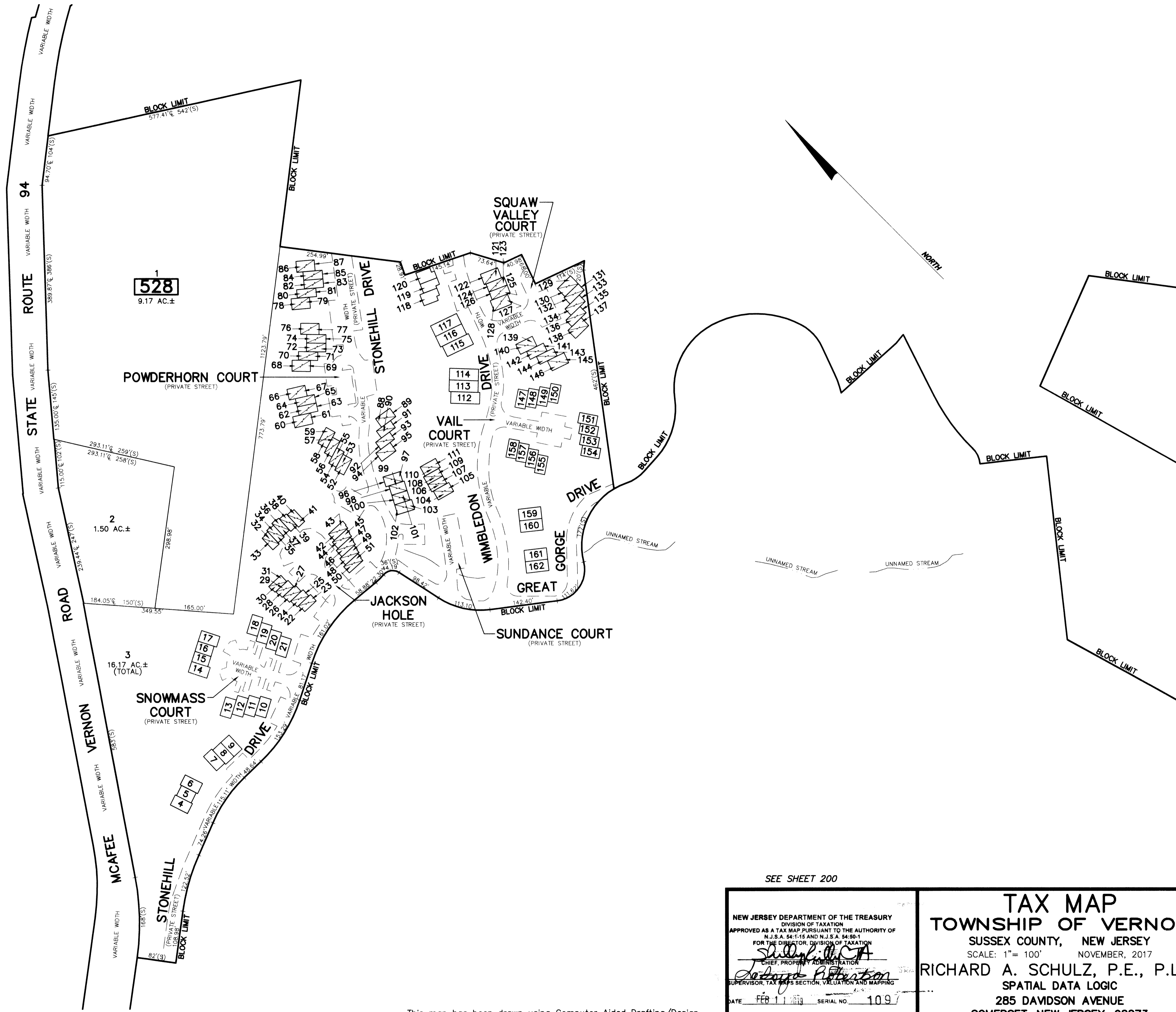
SEE SHEET 202

SEE SHEET 202

SEE SHEET 197

REVISIONS		
DATE	NAME	LIC. No.

BLOCK NUMBER	LOT NUMBER	UNIT NUMBER	SQ. FT.
528	4	1	1592
	5	2	1228
	6	3	1592
	7	1	1528
	8	2	1422
	9	3	1528
	10	4	1644
	11	3	1644
	12	2	1644
	13	1	1644
	14	4	1794
	15	3	1384
	16	2	1384
	17	1	1794
	18	1	1644
	19	2	1644
	20	3	1644
	21	4	1644
	22	10	540
	23	9	540
	24	8	691
	25	7	540
	26	6	540
	27	5	540
	28	4	691
	29	3	540
	30	2	691
	31	1	540
	32	10	540
	33	9	540
	34	8	540
	35	7	540
	36	6	540
	37	5	540
38	4	540	
39	3	540	
40	2	540	
41	1	540	
42	2	612	
43	1	612	
44	4	691	
45	3	540	
46	6	691	
47	5	540	
48	8	691	
49	7	540	
50	10	691	
51	9	540	
52	8	972	
53	7	748	
54	6	842	
55	5	648	
56	4	842	
57	3	648	
58	2	972	
59	1	748	
60	8	972	
61	7	748	
62	6	842	
63	5	648	
64	4	842	
65	3	648	
66	2	972	
67	1	748	
68	10	972	
69	9	748	
70	8	842	
71	7	648	
72	6	842	
73	5	648	
74	4	842	
75	3	648	
76	2	972	
77	1	748	
78	10	972	
79	9	748	
80	8	842	
81	7	648	
82	6	842	
83	5	648	



SEE SHEET 202

SEE SHEET 205

SEE SHEET 202

SEE SHEET 200

SEE SHEET 200

<p>NEW JERSEY DEPARTMENT OF THE TREASURY DIVISION OF TAXATION APPROVED AS A TAX MAP PURSUANT TO THE AUTHORITY OF N.J.S.A. 54:1-15 AND N.J.S.A. 54:50-1 FOR THE DIRECTOR, DIVISION OF TAXATION</p> <p><i>Richard A. Schulz, P.E., P.L.S.</i> CHIEF, PROPERTY ADMINISTRATION</p> <p><i>Richard A. Schulz, P.E., P.L.S.</i> SUPERVISOR, TAX MAPS SECTION, VALUATION AND MAPPING</p> <p>DATE <b>FEB 11 2018</b> SERIAL NO. <b>1097</b></p>	<p><b>TAX MAP</b> <b>TOWNSHIP OF VERNON</b> SUSSEX COUNTY, NEW JERSEY SCALE: 1" = 100' NOVEMBER, 2017 <b>RICHARD A. SCHULZ, P.E., P.L.S.</b> SPATIAL DATA LOGIC 285 DAVIDSON AVENUE SOMERSET, NEW JERSEY, 08873</p>
--	---

This map has been drawn using Computer Aided Drafting/Design (CAD/D) and Coordinated Geometry (COGO).

SEE SHEET 197

SEE SHEET 200

SEE SHEET 197

SEE SHEET 197

SEE SHEET 197

NOTE: FOR ALL TWO LEVEL CONDOMINIUM UNITS  
ODD LOT NUMBERS ARE FIRST FLOOR UNITS AND  
EVEN LOT NUMBERS ARE SECOND FLOOR UNITS.