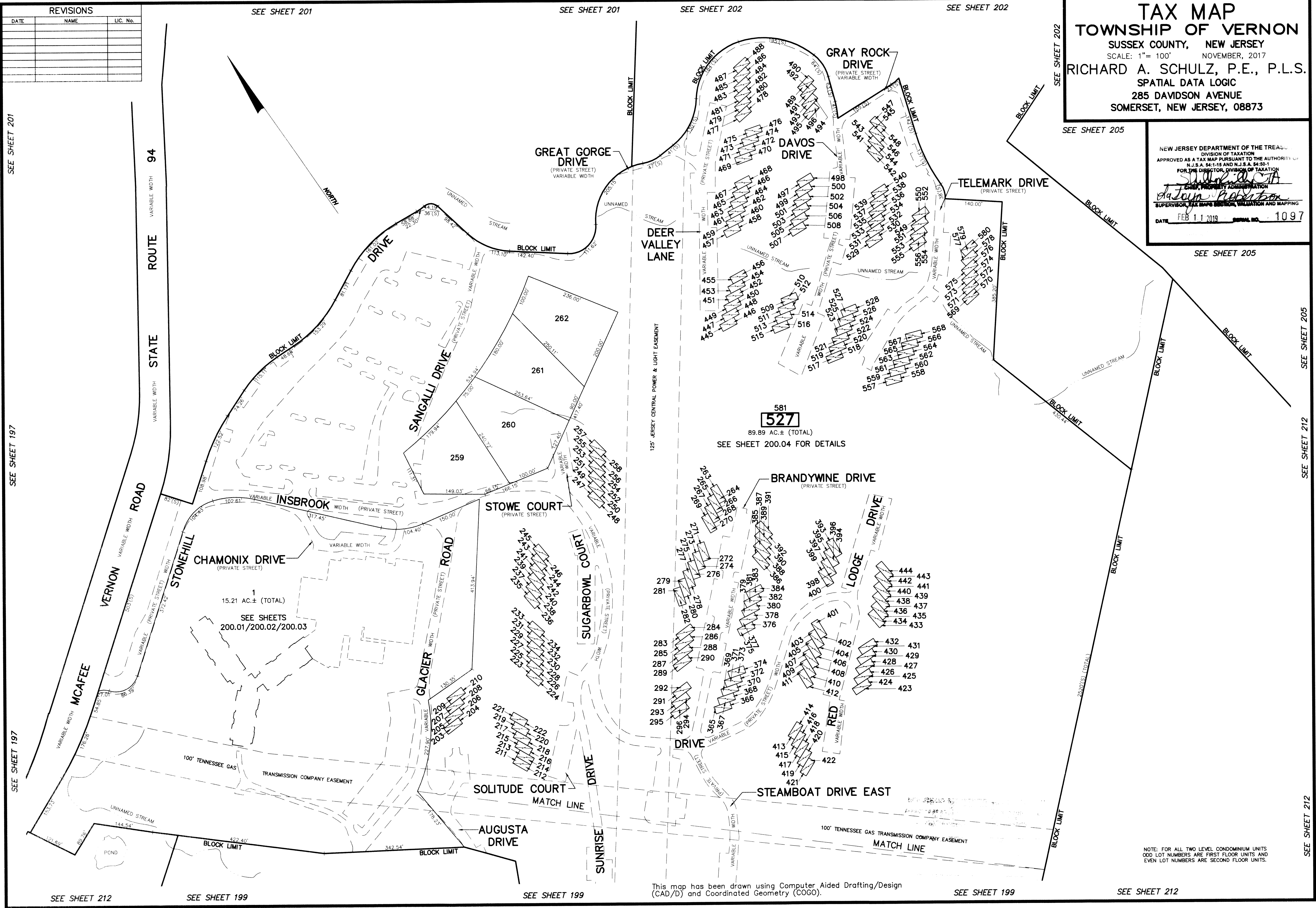


TAX MAP
TOWNSHIP OF VERNON
 SUSSEX COUNTY, NEW JERSEY
 SCALE: 1" = 100' NOVEMBER, 2017
 RICHARD A. SCHULZ, P.E., P.L.S.
 SPATIAL DATA LOGIC
 285 DAVIDSON AVENUE
 SOMERSET, NEW JERSEY, 08873

NEW JERSEY DEPARTMENT OF THE TREASURY
 DIVISION OF TAXATION
 APPROVED AS A TAX MAP PURSUANT TO THE AUTHORITY OF
 N.J.S.A. 54:15 AND N.J.S.A. 54:50-1
 FOR THE DIRECTOR, DIVISION OF TAXATION
Richard A. Schulz
 CHIEF, PROPERTY ADMINISTRATION
Richard A. Schulz
 SUPERVISOR, TAX MAPS SECTION, EVALUATION AND MAPPING
 DATE: FEB 11 2019 SERIAL NO. 1097

REVISIONS		
DATE	NAME	LIC. No.



527
 89.89 AC.± (TOTAL)
 SEE SHEET 200.04 FOR DETAILS

NOTE: FOR ALL TWO LEVEL CONDOMINIUM UNITS
 ODD LOT NUMBERS ARE FIRST FLOOR UNITS AND
 EVEN LOT NUMBERS ARE SECOND FLOOR UNITS.

This map has been drawn using Computer Aided Drafting/Design (CAD/D) and Coordinated Geometry (COGO).

SEE SHEET 201

SEE SHEET 197

SEE SHEET 197

SEE SHEET 212

SEE SHEET 199

SEE SHEET 199

SEE SHEET 199

SEE SHEET 212

SEE SHEET 202

SEE SHEET 205

SEE SHEET 212

SEE SHEET 212