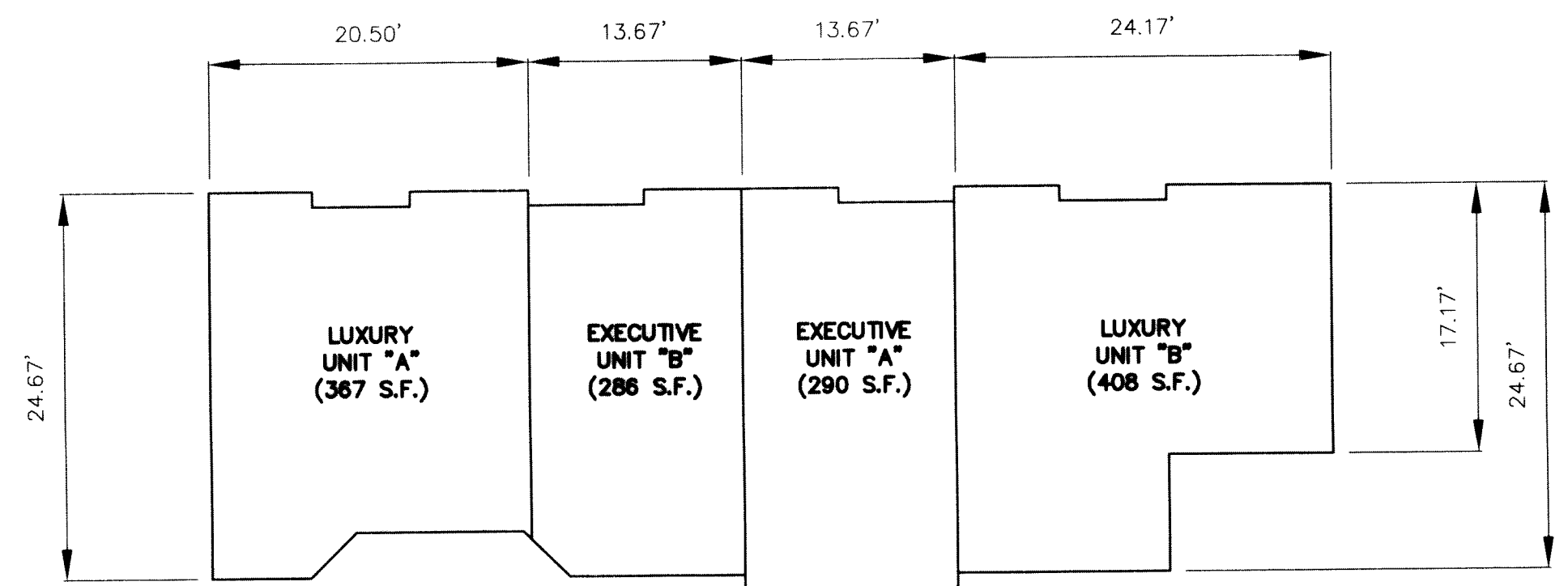
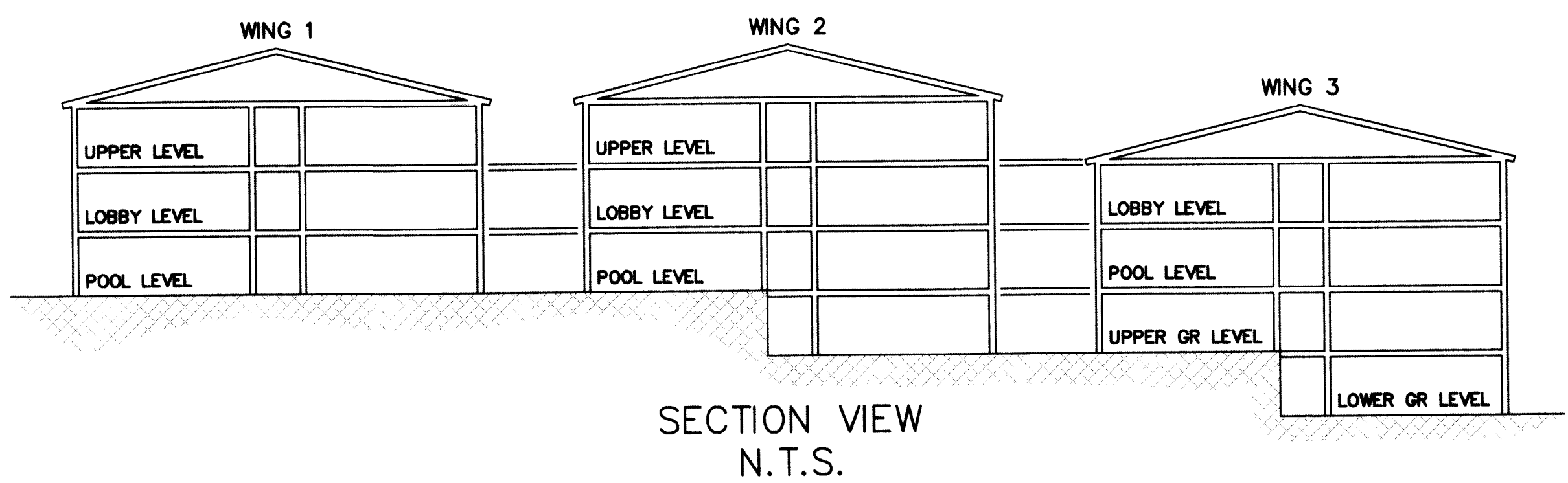
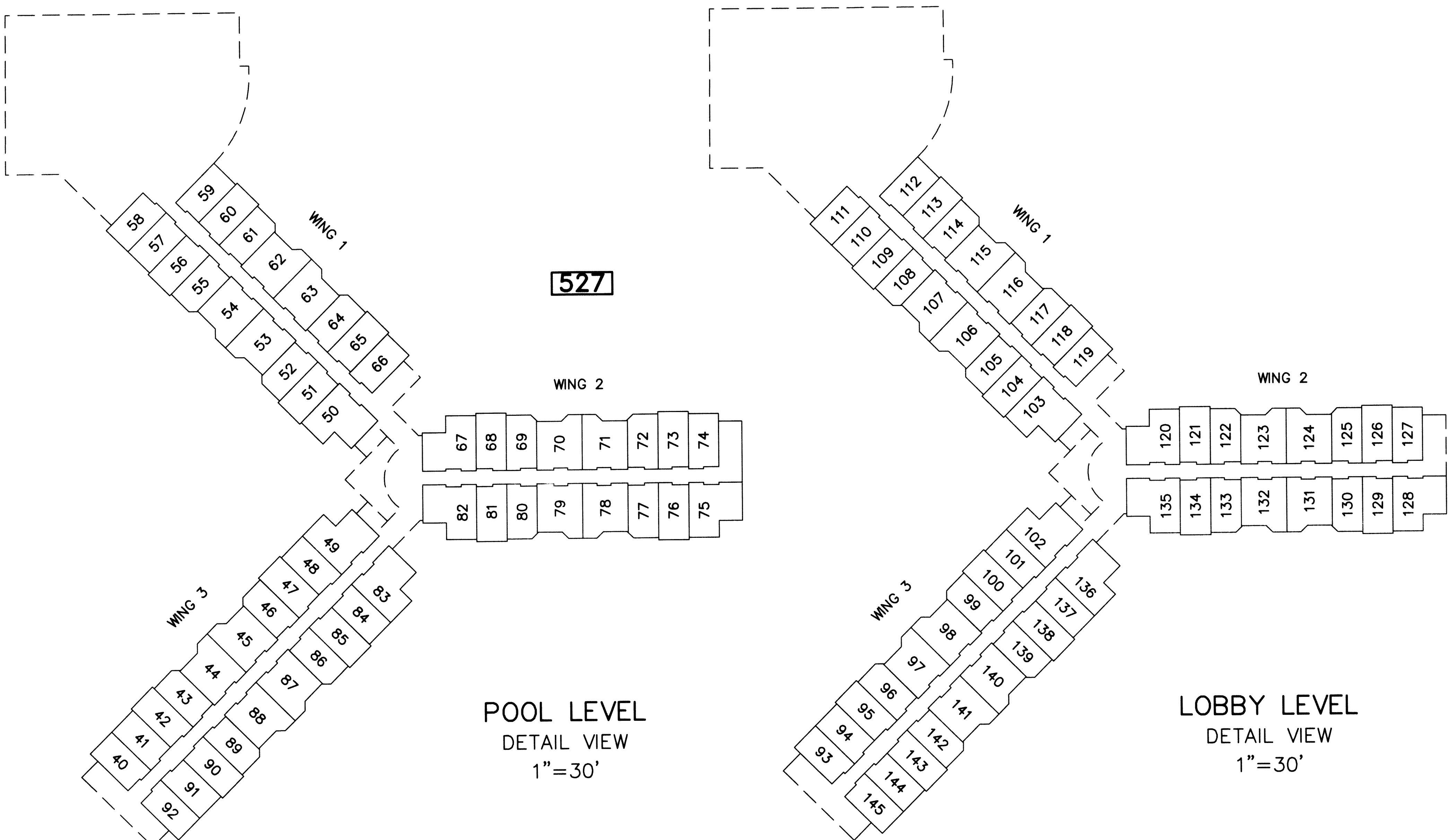


REVISIONS		
DATE	NAME	LIC. No.

BLOCK NUMBER	LOT NUMBER	UNIT NUMBER	SQ. FT.
527	POOL LEVEL		
	40	356	290
	41	354	290
	42	352	290
	43	350	286
	44	348	367
	45	346	367
	46	344	286
	47	342	290
	48	340	290
	49	338	408
	50	318	408
	51	316	290
	52	314	286
	53	312	367
	54	310	367
	55	308	286
	56	306	290
	57	304	290
	58	302	290
	59	303	290
	60	305	290
	61	307	286
	62	309	367
	63	311	367
	64	313	286
	65	315	290
	66	317	290
67	321	408	
68	323	290	
69	325	286	
70	327	367	
71	329	367	
72	331	286	
73	333	290	
74	335	290	
75	334	408	
76	332	290	
77	330	286	
78	328	367	
79	326	367	
80	324	286	
81	322	290	
82	320	408	
83	339	408	
84	341	290	
85	343	290	
86	345	286	
87	347	367	
88	349	367	
89	351	286	
90	353	290	
91	355	290	
92	357	408	

BLOCK NUMBER	LOT NUMBER	UNIT NUMBER	SQ. FT.
527	LOBBY LEVEL		
	93	456	290
	94	454	290
	95	452	290
	96	450	286
	97	448	367
	98	446	367
	99	444	286
	100	442	290
	101	440	290
	102	438	408
	103	418	408
	104	416	290
	105	414	286
	106	412	367
	107	410	367
	108	408	286
	109	406	290
	110	404	290
	111	402	290
	112	403	290
	113	405	290
	114	407	286
	115	409	367
	116	411	367
	117	413	286
	118	415	290
	119	417	290
120	421	408	
121	423	290	
122	425	286	
123	427	367	
124	429	367	
125	431	286	
126	433	290	
127	435	290	
128	434	408	
129	432	290	
130	430	286	
131	428	367	
132	426	367	
133	424	286	
134	422	290	
135	420	408	
136	439	408	
137	441	290	
138	443	290	
139	445	286	
140	447	367	
141	449	367	
142	451	286	
143	453	290	
144	455	290	
145	457	408	



TYPICAL UNIT PLANS
1"=10'

NEW JERSEY DEPARTMENT OF THE TREASURY
DIVISION OF TAXATION
APPROVED AS A TAX MAP PURSUANT TO THE AUTHORITY OF
N.J.S.A. 54:1-16 AND N.J.S.A. 54:56-1
FOR THE DIRECTOR, DIVISION OF TAXATION
Richard A. Schulz
CHIEF, PROPERTY ADMINISTRATION
Richard A. Schulz
SUPERVISOR, TAX MAPS SECTION, VALUATION AND MAPPING
DATE: 1097 SERIAL NO.: 1097
FEB 11 2019

TAX MAP
TOWNSHIP OF VERNON
SUSSEX COUNTY, NEW JERSEY
SCALE: AS SHOWN NOVEMBER, 2017
RICHARD A. SCHULZ, P.E., P.L.S.
SPATIAL DATA LOGIC
285 DAVIDSON AVENUE
SOMERSET, NEW JERSEY, 08873

This map has been drawn using Computer Aided Drafting/Design (CAD/D) and Coordinated Geometry (COGO).