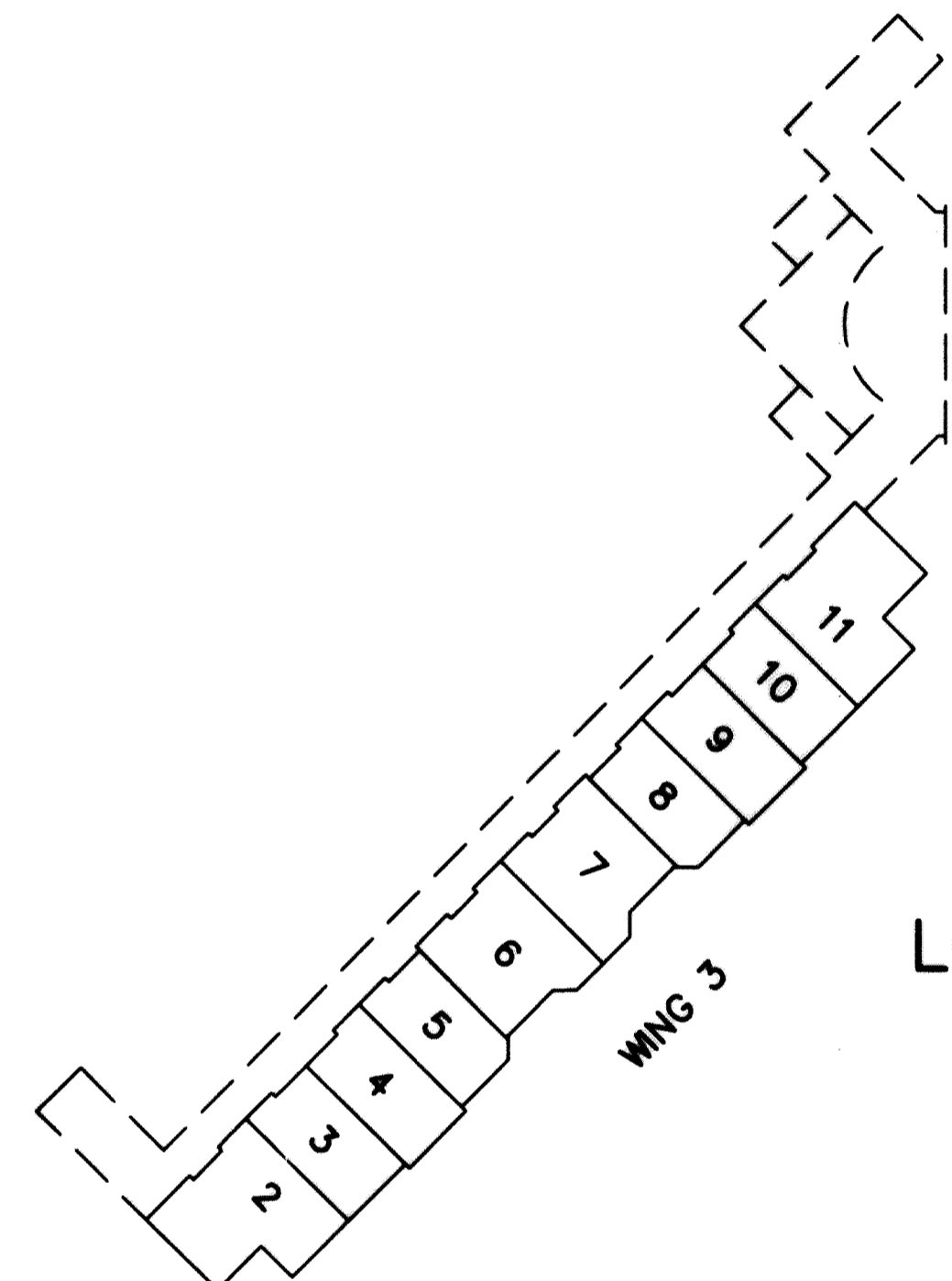


REVISIONS		
DATE	NAME	LIC. No.

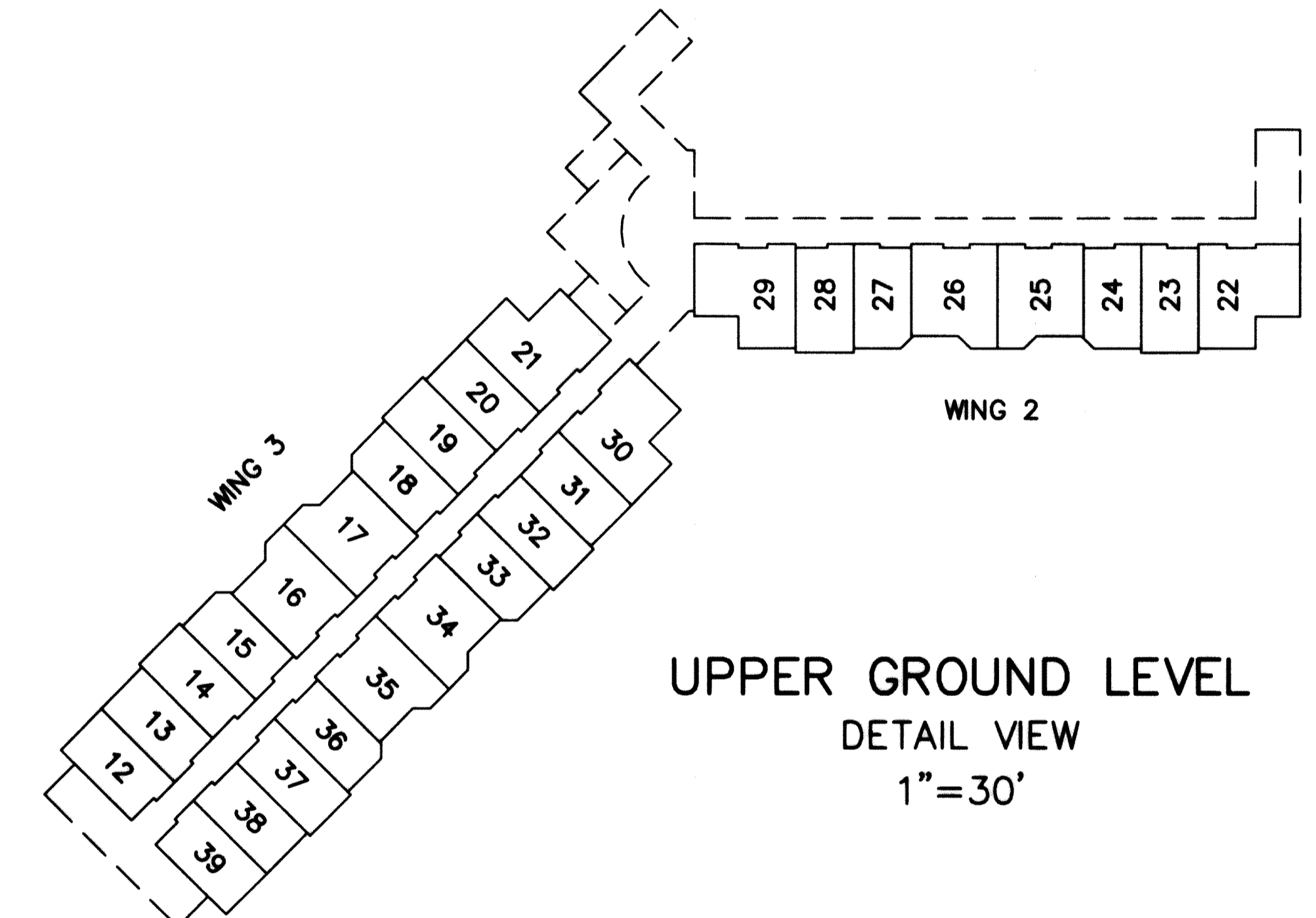
BLOCK NUMBER	LOT NUMBER	UNIT NUMBER	SQ. FT.
LOWER GROUND LEVEL			
527	2	111	408
	3	110	290
	4	109	290
	5	108	286
	6	107	367
	7	106	367
	8	105	286
	9	104	290
	10	103	286
	11	102	408

BLOCK NUMBER	LOT NUMBER	UNIT NUMBER	SQ. FT.
UPPER GROUND LEVEL			
527	12	230	290
	13	228	290
	14	226	290
	15	224	286
	16	222	367
	17	220	367
	18	218	286
	19	216	290
	20	214	290
	21	212	408
	22	209	408
	23	208	290
	24	207	286
	25	206	367
	26	205	367
	27	204	286
	28	203	290
	29	202	408
	30	211	408
	31	213	290
	32	215	290
	33	217	286
	34	219	367
	35	221	367
	36	223	286
	37	225	290
	38	227	290
	39	229	408

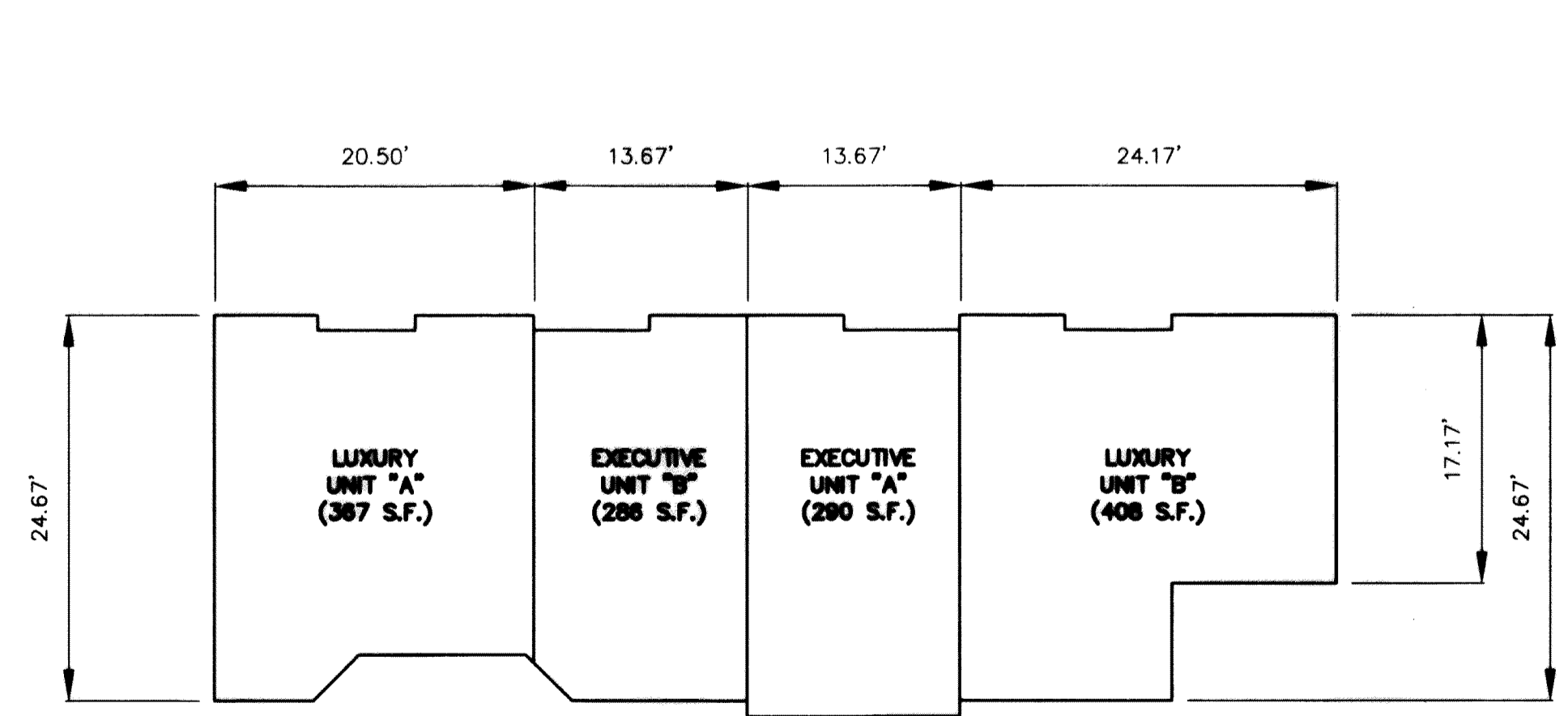
**527**



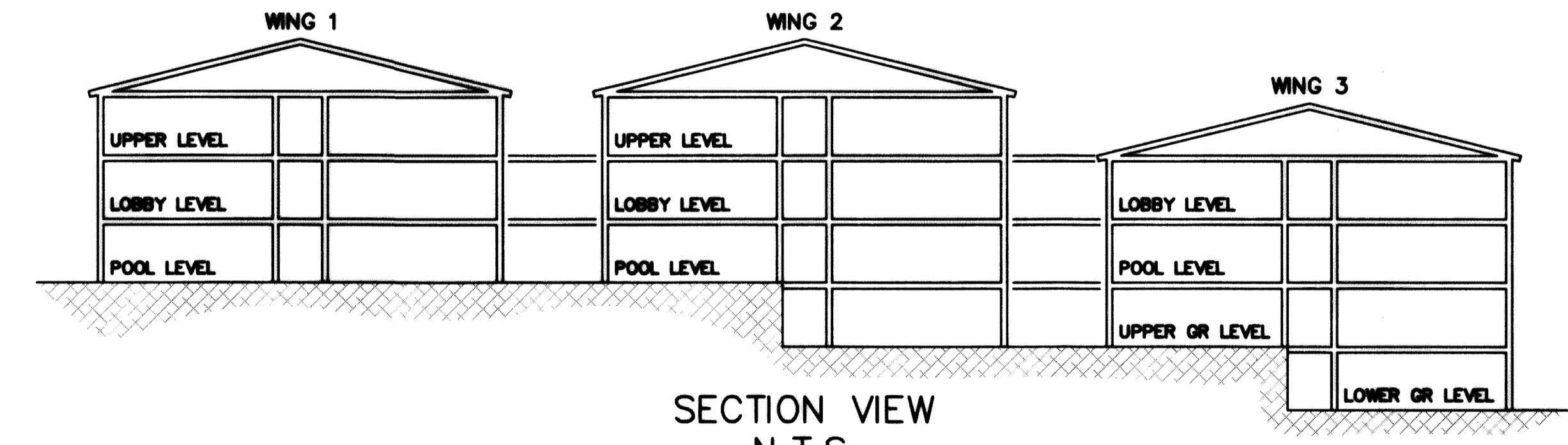
LOWER GROUND LEVEL  
DETAIL VIEW  
1"=30'



UPPER GROUND LEVEL  
DETAIL VIEW  
1"=30'



TYPICAL UNIT PLANS  
1"=10'



SECTION VIEW  
N.T.S.

NEW JERSEY DEPARTMENT OF THE TREASURY  
DIVISION OF TAXATION  
APPROVED AS A TAX MAP PURSUANT TO THE AUTHORITY OF  
R.I.S.A. 84-14 AND N.J.S.A. 84-61  
FOR THE DIRECTOR, DIVISION OF TAXATION  
*Richard A. Schulz*  
CHIEF, PROPERTY ADMINISTRATION  
SUPERVISOR, TAX MAPS SECTION, VALUATION AND MAPPING  
DATE FEB 11 2018 SERIAL NO. 1097

**TAX MAP**  
**TOWNSHIP OF VERNON**  
SUSSEX COUNTY, NEW JERSEY  
SCALE: AS SHOWN NOVEMBER, 2017  
**RICHARD A. SCHULZ, P.E., P.L.S.**  
SPATIAL DATA LOGIC  
285 DAVIDSON AVENUE  
SOMERSET, NEW JERSEY, 08873

This map has been drawn using Computer Aided Drafting/Design (CAD/D) and Coordinated Geometry (COGO).