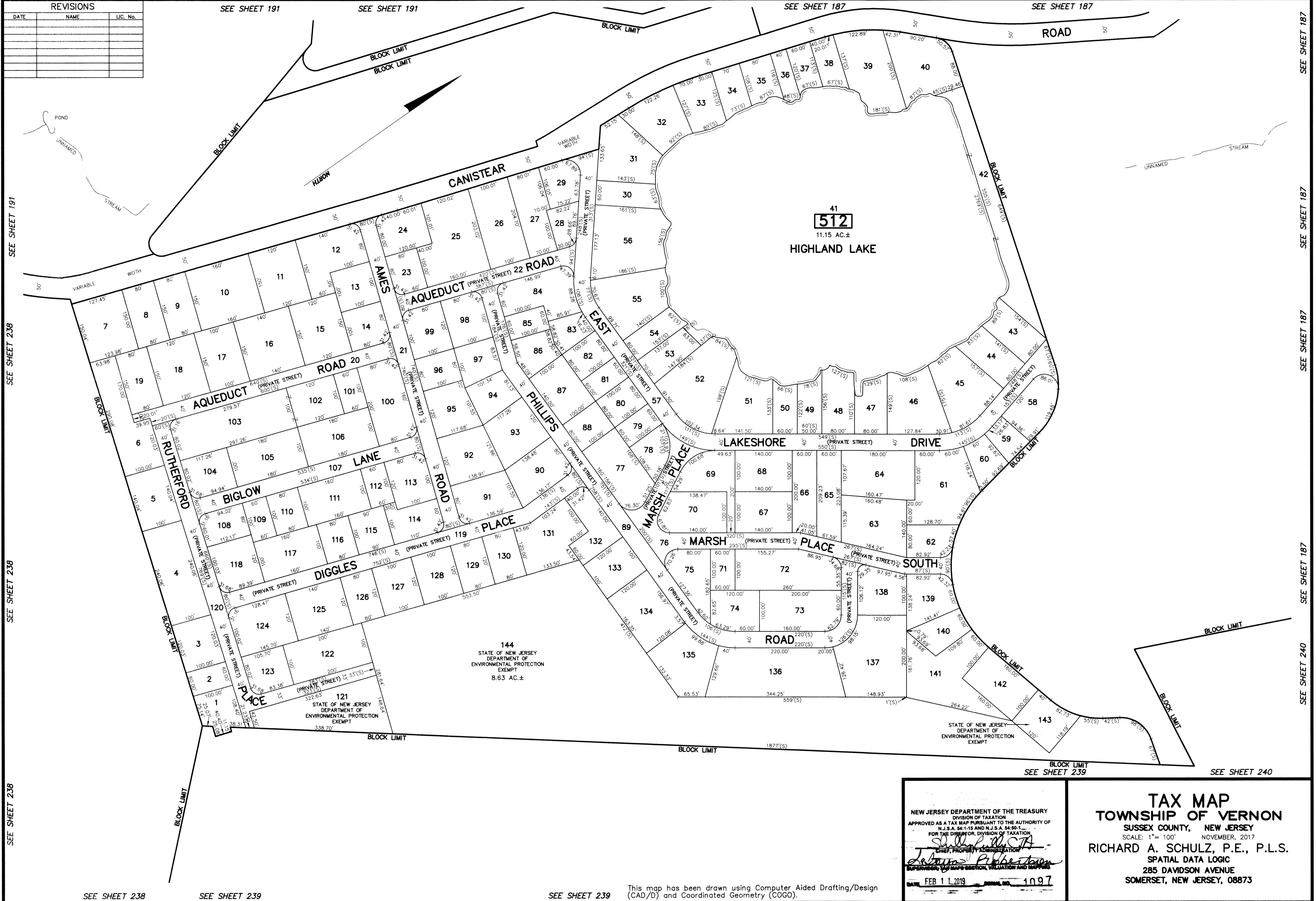


REVISIONS		
DATE	NAME	LIC. No.



NEW JERSEY DEPARTMENT OF THE TREASURY
 DIVISION OF TAXATION
 APPROVED AS A TAX MAP PURSUANT TO THE AUTHORITY OF
 N.J.S.A. 54:1-18 AND N.J.S.A. 54:50-1
 FOR THE DIRECTOR, DIVISION OF TAXATION
Richard A. Schulz
 CHIEF, PROPERTY ADMINISTRATION
 SUPERVISOR, TAX MAPS SECTION, EVALUATION AND SERVICE
 FEB 11 2019 1097

TAX MAP
TOWNSHIP OF VERNON
 SUSSEX COUNTY, NEW JERSEY
 SCALE: 1" = 100' NOVEMBER, 2017
RICHARD A. SCHULZ, P.E., P.L.S.
 SPATIAL DATA LOGIC
 285 DAVIDSON AVENUE
 SOMERSET, NEW JERSEY, 08873

SEE SHEET 238 SEE SHEET 239 SEE SHEET 239 SEE SHEET 239
 This map has been drawn using Computer Aided Drafting/Design (CAD/D) and Coordinated Geometry (COGO).