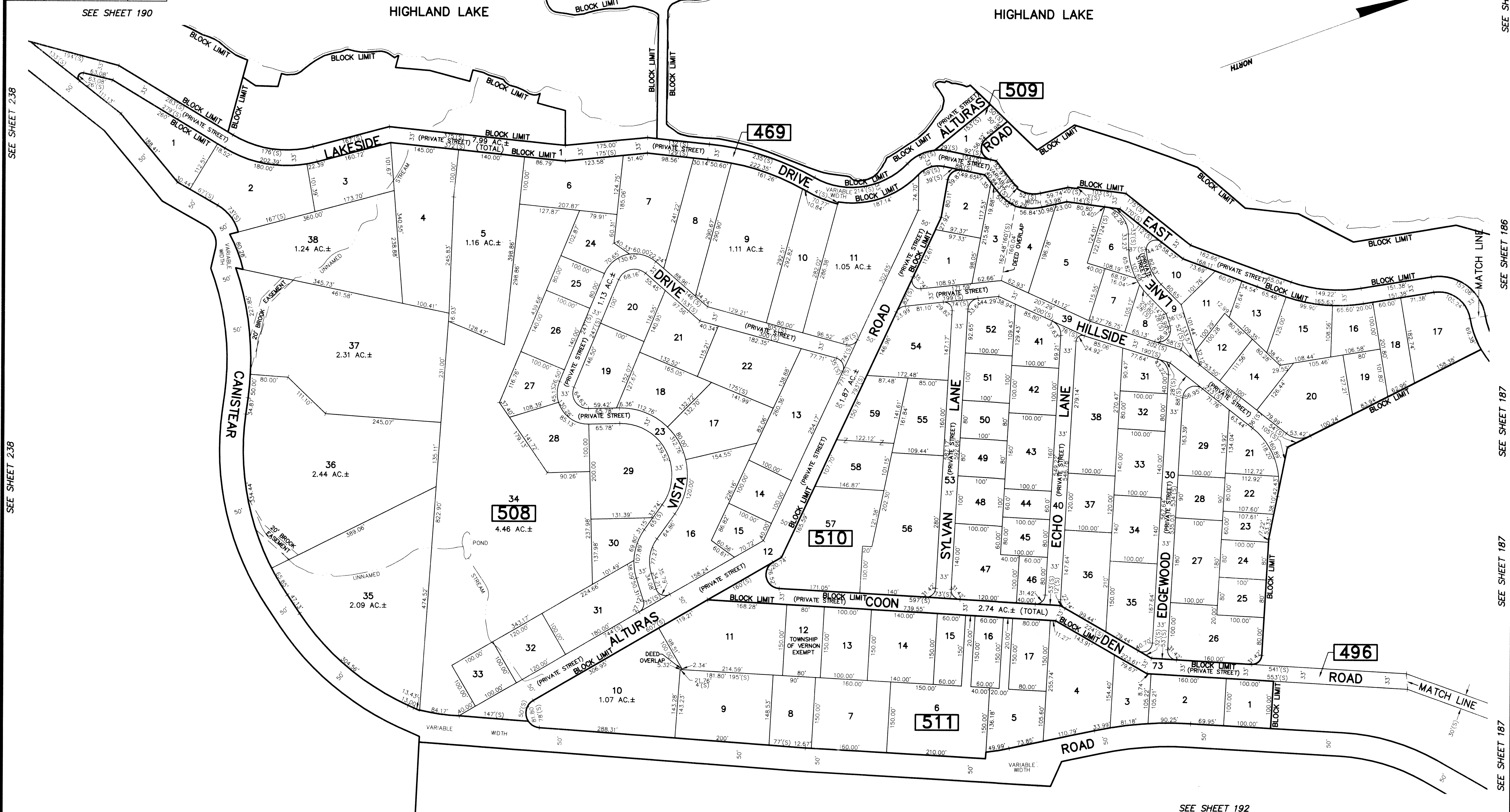


REVISIONS		
DATE	NAME	L.C. No.



DEED OVERLAP	
BLOCK	LOT
510	3
510	4
511	10
511	11

THE OVERLAPPING LINES & DIMENSIONS SHOWN ARE PLOTTED IN ACCORDANCE WITH THE METES & BOUNDS DESCRIPTIONS APPEARING IN THE LAST DEED OF RECORD FOR EACH PARCEL & DO NOT PURPORT TO REPRESENT TITLE OR OWNERSHIP STATUS IN ANY MANNER. THESE SITUATIONS ARE SUBJECT TO SOLUTION BY THE PROPERTY OWNERS CONCERNED.

This map has been drawn using Computer Aided Drafting/Design (CAD/D) and Coordinated Geometry (COGO).

NEW JERSEY DEPARTMENT OF THE TREASURY
 DIVISION OF TAXATION
 APPROVED AS A TAX MAP BY THE AUTHORITY OF
 N.J.S.A. 17:27 AND N.J.S.A. 54:50-1
 FOR THE DIRECTOR, DIVISION OF TAXATION
Shirley A. ...
 CHIEF, PROPERTY ADMINISTRATION
Richard A. Schulz
 SUPERVISOR, TAX MAPS SECTION, VALUATION AND MAPPING
 DATE: FEB 11 2018 SERIAL NO. 1097

TAX MAP
TOWNSHIP OF VERNON
 SUSSEX COUNTY, NEW JERSEY
 SCALE: 1" = 100' NOVEMBER, 2017
 RICHARD A. SCHULZ, P.E., P.L.S.
 SPATIAL DATA LOGIC
 285 DAVIDSON AVENUE
 SOMERSET, NEW JERSEY, 08873

SEE SHEET 238
SEE SHEET 238
SEE SHEET 238
SEE SHEET 238

SEE SHEET 186
SEE SHEET 186
SEE SHEET 187
SEE SHEET 187
SEE SHEET 187

SEE SHEET 189
SEE SHEET 189
SEE SHEET 189
SEE SHEET 186
SEE SHEET 192
SEE SHEET 192
SEE SHEET 192
SEE SHEET 192
SEE SHEET 192