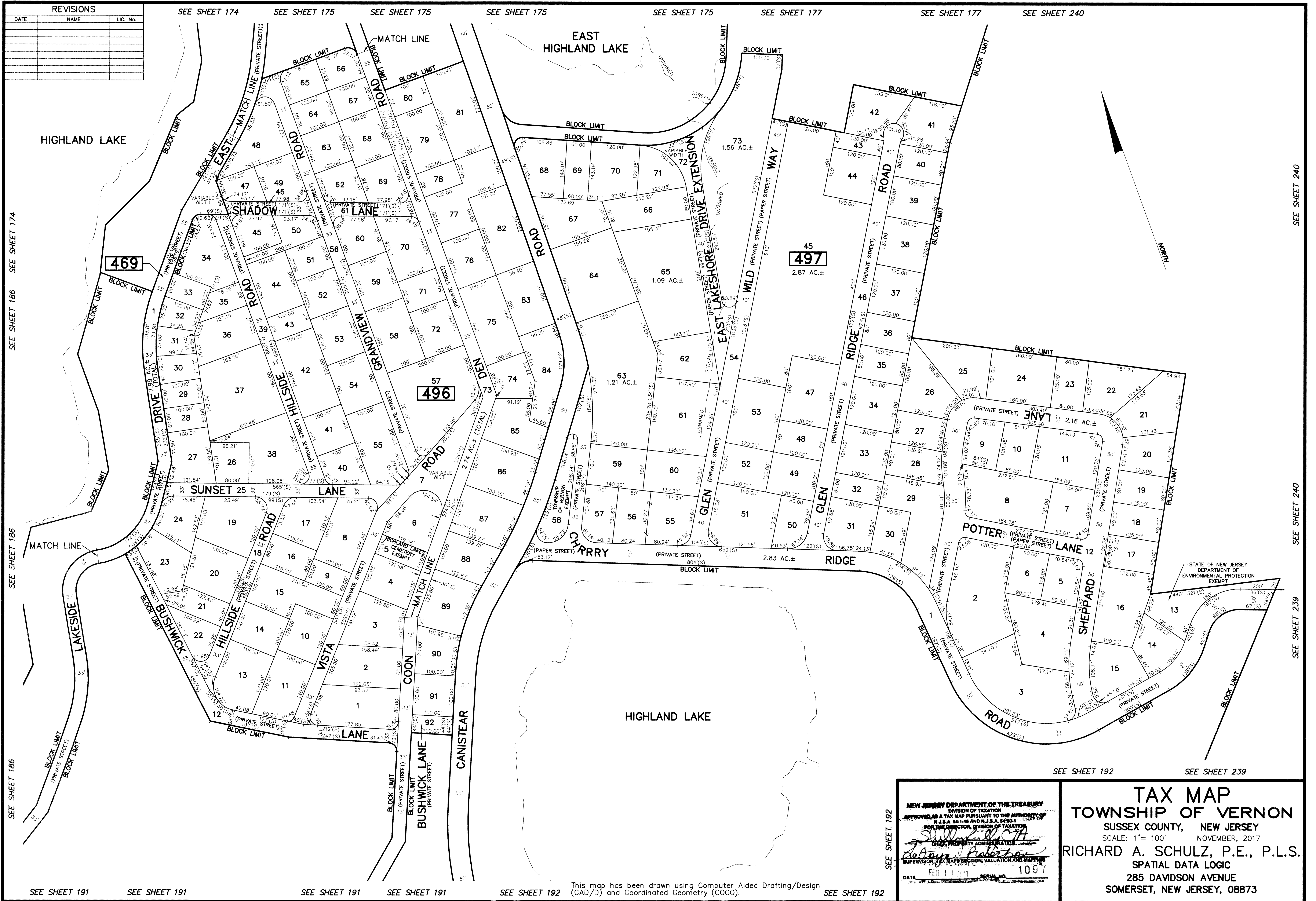


REVISIONS		
DATE	NAME	LIC. No.



NEW JERSEY DEPARTMENT OF THE TREASURY
 DIVISION OF TAXATION
 APPROVED AS A TAX MAP PURSUANT TO THE AUTHORITY OF
 N.J.S.A. 54:15 AND N.J.S.A. 54:16
 FOR THE DIRECTOR, DIVISION OF TAXATION
Richard A. Schulz, P.E., P.L.S.
 CHIEF, PROPERTY ADMINISTRATION
Robert A. Probert
 SUPERVISOR, TAX MAPS SECTION, VALUATION AND MAPPING
 DATE FEB 1 2018 SERIAL NO. 1097

TAX MAP
TOWNSHIP OF VERNON
 SUSSEX COUNTY, NEW JERSEY
 SCALE: 1"= 100' NOVEMBER, 2017
RICHARD A. SCHULZ, P.E., P.L.S.
 SPATIAL DATA LOGIC
 285 DAVIDSON AVENUE
 SOMERSET, NEW JERSEY, 08873

This map has been drawn using Computer Aided Drafting/Design (CAD/D) and Coordinated Geometry (COGO).