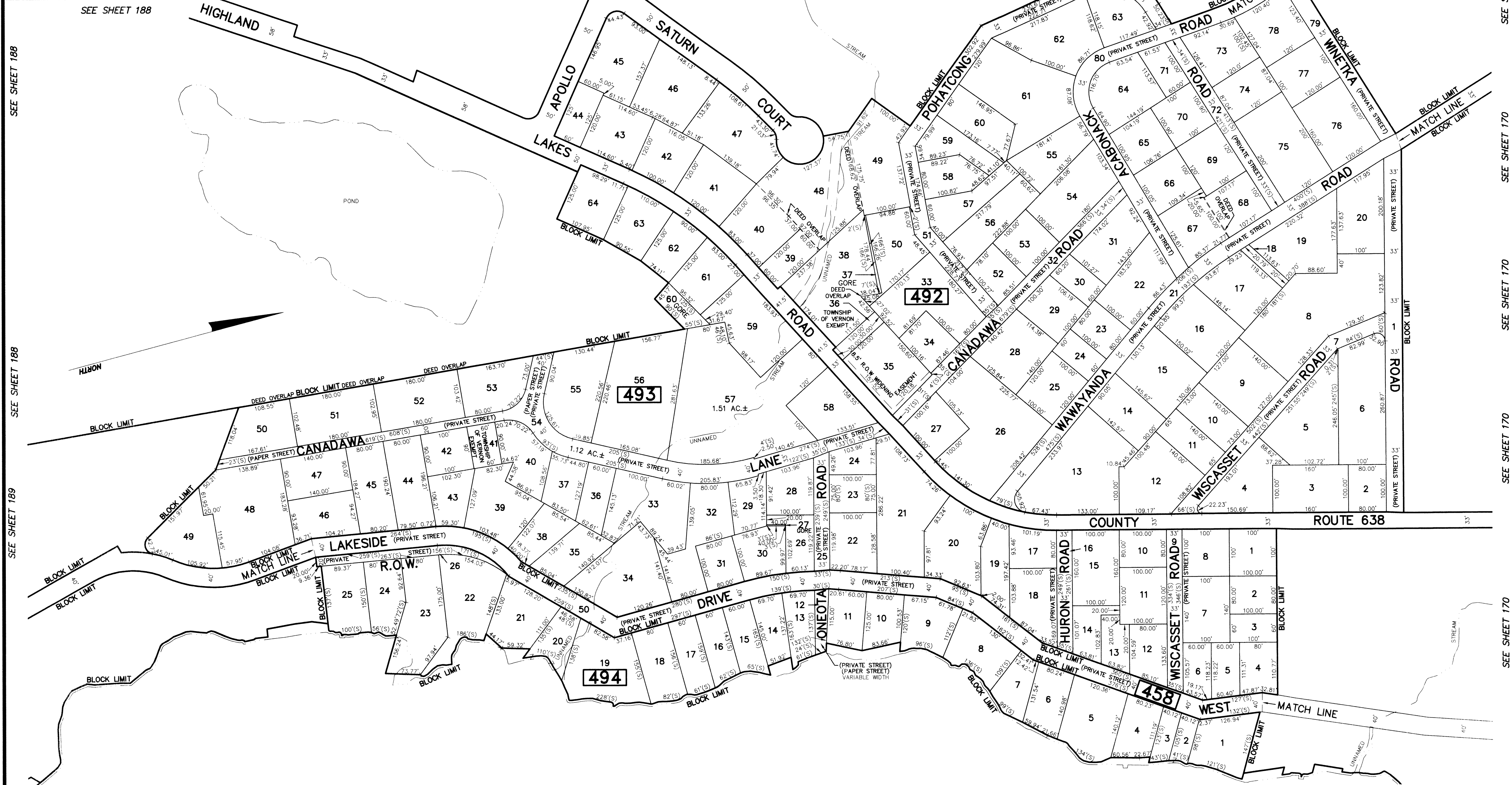


REVISIONS		
DATE	NAME	LIC. No.

SEE SHEET 184      SEE SHEET 184      SEE SHEET 184      SEE SHEET 184      SEE SHEET 170



SEE SHEET 188  
SEE SHEET 189  
SEE SHEET 189  
SEE SHEET 189

SEE SHEET 170  
SEE SHEET 170  
SEE SHEET 170  
SEE SHEET 170



HIGHLAND LAKE

DEED OVERLAP	BLOCK	LOT
	492	38
	492	39
	492	40
	492	48
	492	49
	492	50
	492	67
	492	68
	493	50
	493	51
	493	52
	493	53
	498	1

THE OVERLAPPING LINES & DIMENSIONS SHOWN ARE PLOTTED IN ACCORDANCE WITH THE METES & BOUNDS DESCRIPTIONS APPEARING THE LAST DEED OF RECORD FOR EACH PARCEL & DO NOT PURPORT TO REPRESENT TITLE OR OWNERSHIP STATUS IN ANY MANNER. THESE SITUATIONS ARE SUBJECT TO SOLUTION BY THE PROPERTY OWNERS CONCERNED.

This map has been drawn using Computer Aided Drafting/Design (CAD/D) and Coordinated Geometry (COGO).

SEE SHEET 186      SEE SHEET 186

NEW JERSEY DEPARTMENT OF THE TREASURY  
DIVISION OF TAXATION  
APPROVED AS A TAX MAP PURSUANT TO THE AUTHORITY OF  
N.J.S.A. 54:1-15 AND N.J.S.A. 54:50-1  
FOR THE DIRECTOR, DIVISION OF TAXATION

*Richard A. Schulz*  
CHIEF, PROPERTY ADMINISTRATION

*Richard A. Schulz*  
SUPERVISOR, TAX MAPS SECTION, VALUATION AND MAPPING

DATE: FEB 11 2019      SERIAL NO. 1097

SEE SHEET 186      SEE SHEET 170

### TAX MAP

## TOWNSHIP OF VERNON

SUSSEX COUNTY, NEW JERSEY  
SCALE: 1" = 100'      NOVEMBER, 2017

**RICHARD A. SCHULZ, P.E., P.L.S.**  
SPATIAL DATA LOGIC  
285 DAWDSON AVENUE  
SOMERSET, NEW JERSEY, 08873