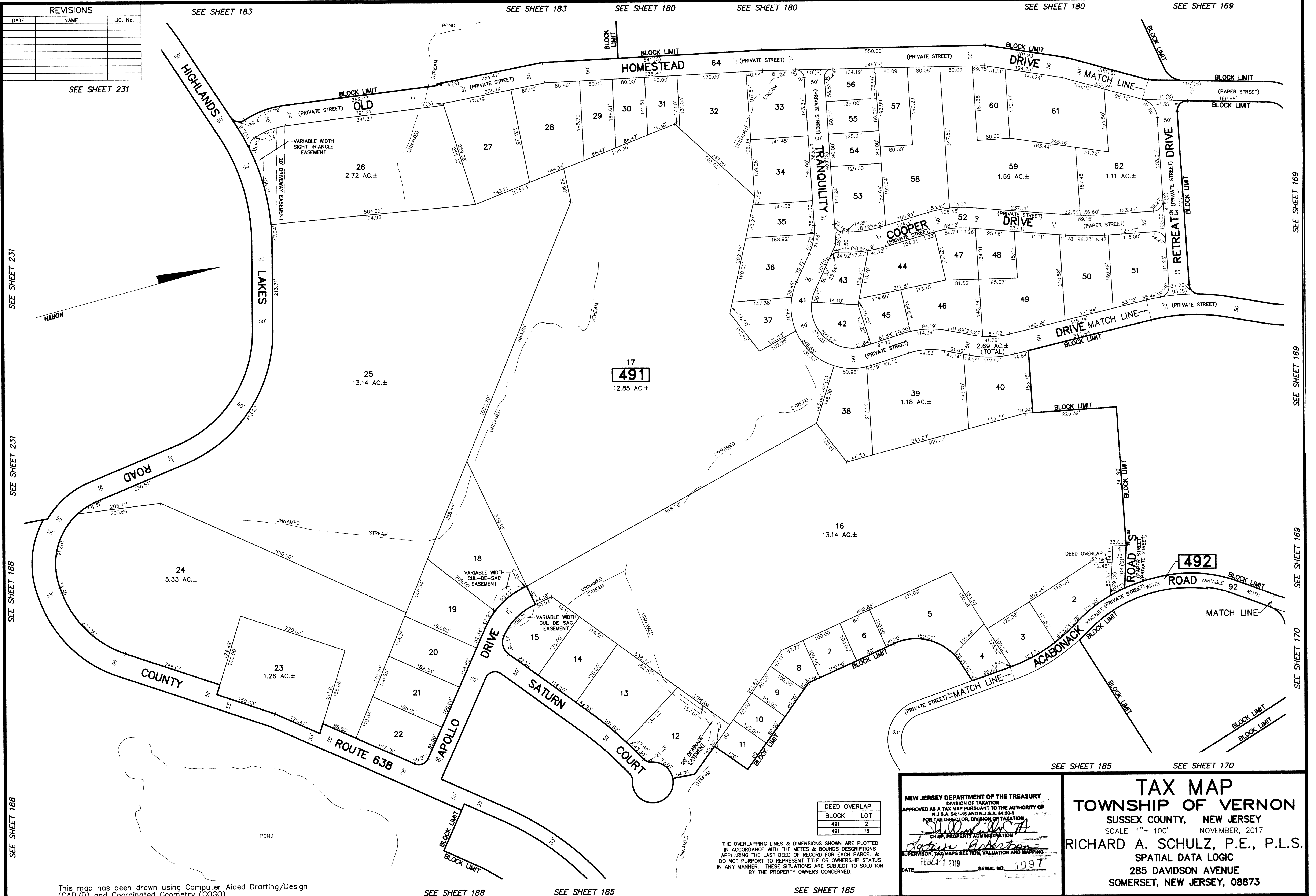


REVISIONS		
DATE	NAME	LIC. No.



SEE SHEET 231

SEE SHEET 231

SEE SHEET 231

SEE SHEET 188

SEE SHEET 188

SEE SHEET 183

SEE SHEET 183

SEE SHEET 180

SEE SHEET 180

SEE SHEET 180

SEE SHEET 169

SEE SHEET 169

SEE SHEET 169

SEE SHEET 169

SEE SHEET 170

This map has been drawn using Computer Aided Drafting/Design (CAD/D) and Coordinated Geometry (COGO).

SEE SHEET 188

SEE SHEET 185

SEE SHEET 185

DEED OVERLAP	
BLOCK	LOT
491	2
491	18

THE OVERLAPPING LINES & DIMENSIONS SHOWN ARE PLOTTED IN ACCORDANCE WITH THE METES & BOUNDS DESCRIPTIONS APPEARING THE LAST DEED OF RECORD FOR EACH PARCEL & DO NOT PURPORT TO REPRESENT TITLE OR OWNERSHIP STATUS IN ANY MANNER. THESE SITUATIONS ARE SUBJECT TO SOLUTION BY THE PROPERTY OWNERS CONCERNED.

NEW JERSEY DEPARTMENT OF THE TREASURY
 DIVISION OF TAXATION
 APPROVED AS A TAX MAP PURSUANT TO THE AUTHORITY OF
 N.J.S.A. 54:1-15 AND N.J.S.A. 54:50-1
 FOR THE DIRECTOR, DIVISION OF TAXATION
[Signature]
 CHIEF, PROPERTY ADMINISTRATION
[Signature]
 SUPERVISOR, TAX MAPS SECTION, VALUATION AND MAPPING
 DATE: FEB 11 2019 SERIAL NO. 1097

TAX MAP
TOWNSHIP OF VERNON
 SUSSEX COUNTY, NEW JERSEY
 SCALE: 1" = 100' NOVEMBER, 2017
RICHARD A. SCHULZ, P.E., P.L.S.
 SPATIAL DATA LOGIC
 285 DAVIDSON AVENUE
 SOMERSET, NEW JERSEY, 08873