

REVISIONS		
DATE	NAME	LIC. No.

SEE SHEET 182

SEE SHEET 182

SEE SHEET 231

SEE SHEET 231

SEE SHEET 179

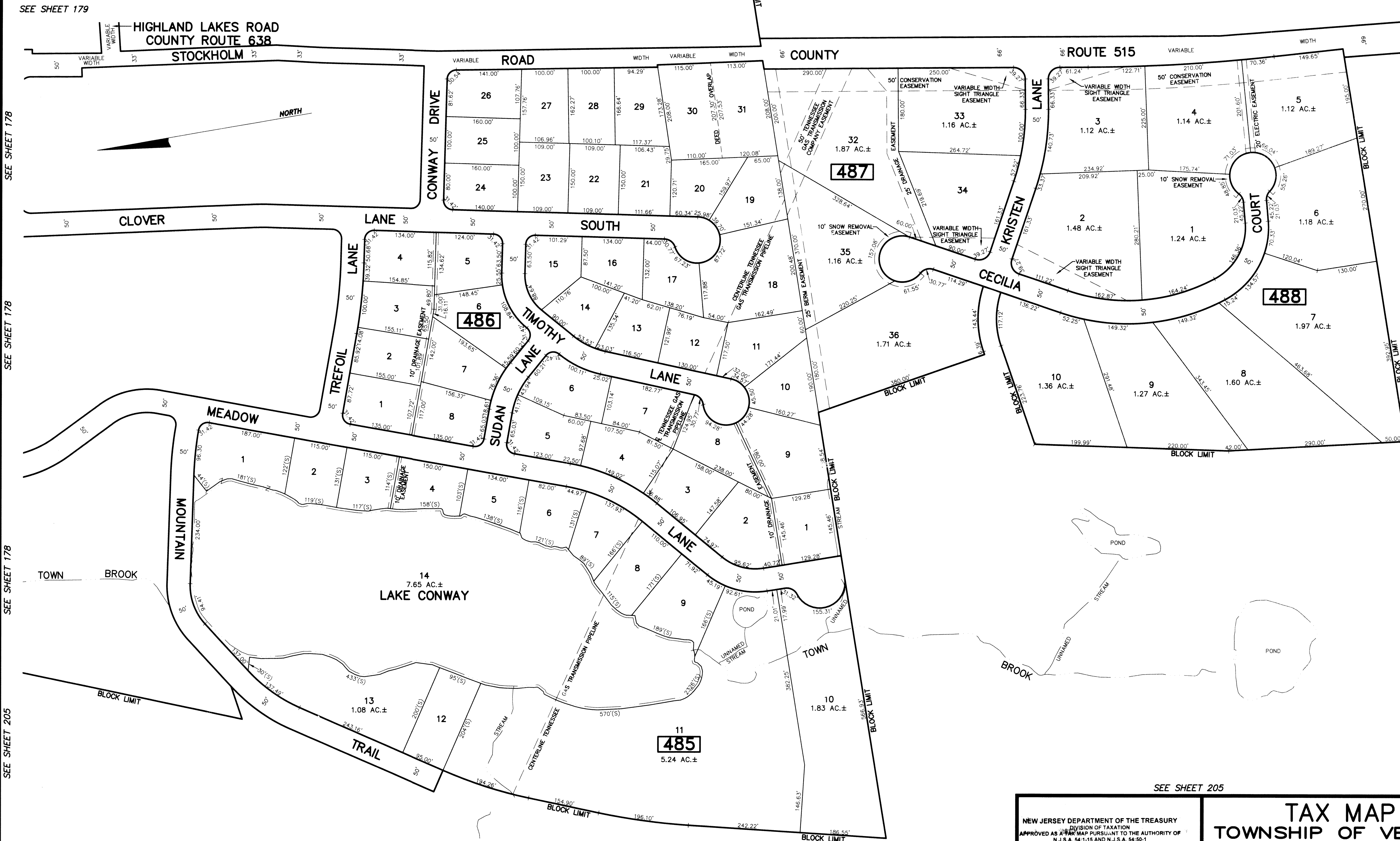
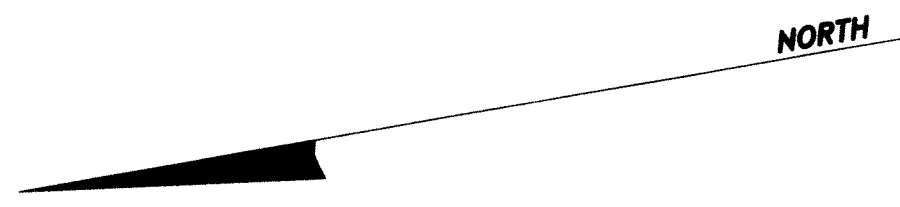
HIGHLAND LAKES ROAD
COUNTY ROUTE 638

STOCKHOLM

ROAD

COUNTY

ROUTE 515



SEE SHEET 178

SEE SHEET 178

SEE SHEET 178

SEE SHEET 205

SEE SHEET 231

SEE SHEET 205

SEE SHEET 205

SEE SHEET 205

SEE SHEET 205

SEE SHEET 205

SEE SHEET 205

THE OVERLAPPING LINES & DIMENSIONS SHOWN ARE PLOTTED IN ACCORDANCE WITH THE METES & BOUNDS DESCRIPTIONS APPEARING THE LAST DEED OF RECORD FOR EACH PARCEL & DO NOT PURPORT TO REPRESENT TITLE OR OWNERSHIP STATUS IN ANY MANNER. THESE SITUATIONS ARE SUBJECT TO SOLUTION BY THE PROPERTY OWNERS CONCERNED.

DEED OVERLAP	
BLOCK	LOT
487	30
487	31

This map has been drawn using Computer Aided Drafting/Design (CAD/D) and Coordinated Geometry (COGO).

NEW JERSEY DEPARTMENT OF THE TREASURY
DIVISION OF TAXATION
APPROVED AS A TAX MAP PURSUANT TO THE AUTHORITY OF
N.J.S.A. 54:1-15 AND N.J.S.A. 54:50-1
FOR THE DIRECTOR, DIVISION OF TAXATION
[Signature]
CHIEF, PROPERTY ADMINISTRATION
[Signature]
SUPERVISOR, TAX MAPS SECTION, VALUATION AND MAPPING
DATE: FEB 11 2019 SERIAL NO. 1097

TAX MAP
TOWNSHIP OF VERNON
SUSSEX COUNTY, NEW JERSEY
SCALE: 1" = 100' NOVEMBER, 2017
RICHARD A. SCHULZ, P.E., P.L.S.
SPATIAL DATA LOGIC
285 DAVIDSON AVENUE
SOMERSET, NEW JERSEY, 08873