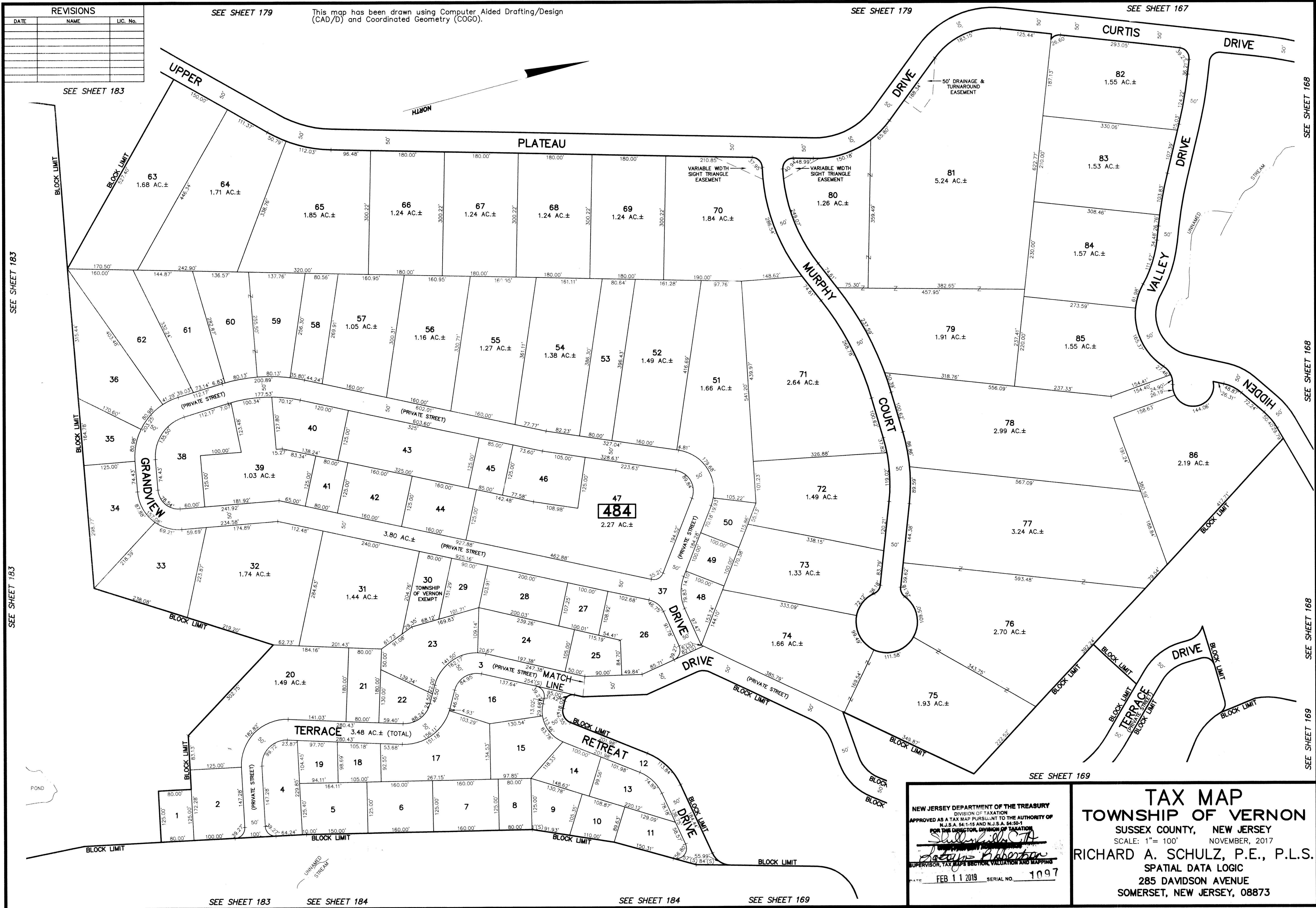


REVISIONS		
DATE	NAME	LIC. No.

SEE SHEET 179 This map has been drawn using Computer Aided Drafting/Design (CAD/D) and Coordinated Geometry (COGO).

SEE SHEET 179

SEE SHEET 167



NEW JERSEY DEPARTMENT OF THE TREASURY  
 DIVISION OF TAXATION  
 APPROVED AS A TAX MAP PURSUANT TO THE AUTHORITY OF  
 N.J.S.A. 54:1-15 AND N.J.S.A. 54:50-1  
 FOR THE DIRECTOR, DIVISION OF TAXATION  
*[Signature]*  
 SUPERVISOR, TAX MAPS SECTION, VALUATION AND MAPPING  
 FEB 11 2019 SERIAL NO. 1097

**TAX MAP**  
**TOWNSHIP OF VERNON**  
 SUSSEX COUNTY, NEW JERSEY  
 SCALE: 1"= 100' NOVEMBER, 2017  
 RICHARD A. SCHULZ, P.E., P.L.S.  
 SPATIAL DATA LOGIC  
 285 DAVIDSON AVENUE  
 SOMERSET, NEW JERSEY, 08873