

REVISIONS		
DATE	NAME	LIC. No.

SEE SHEET 46

SEE SHEET 17

SEE SHEET 17

SEE SHEET 46

SEE SHEET 46

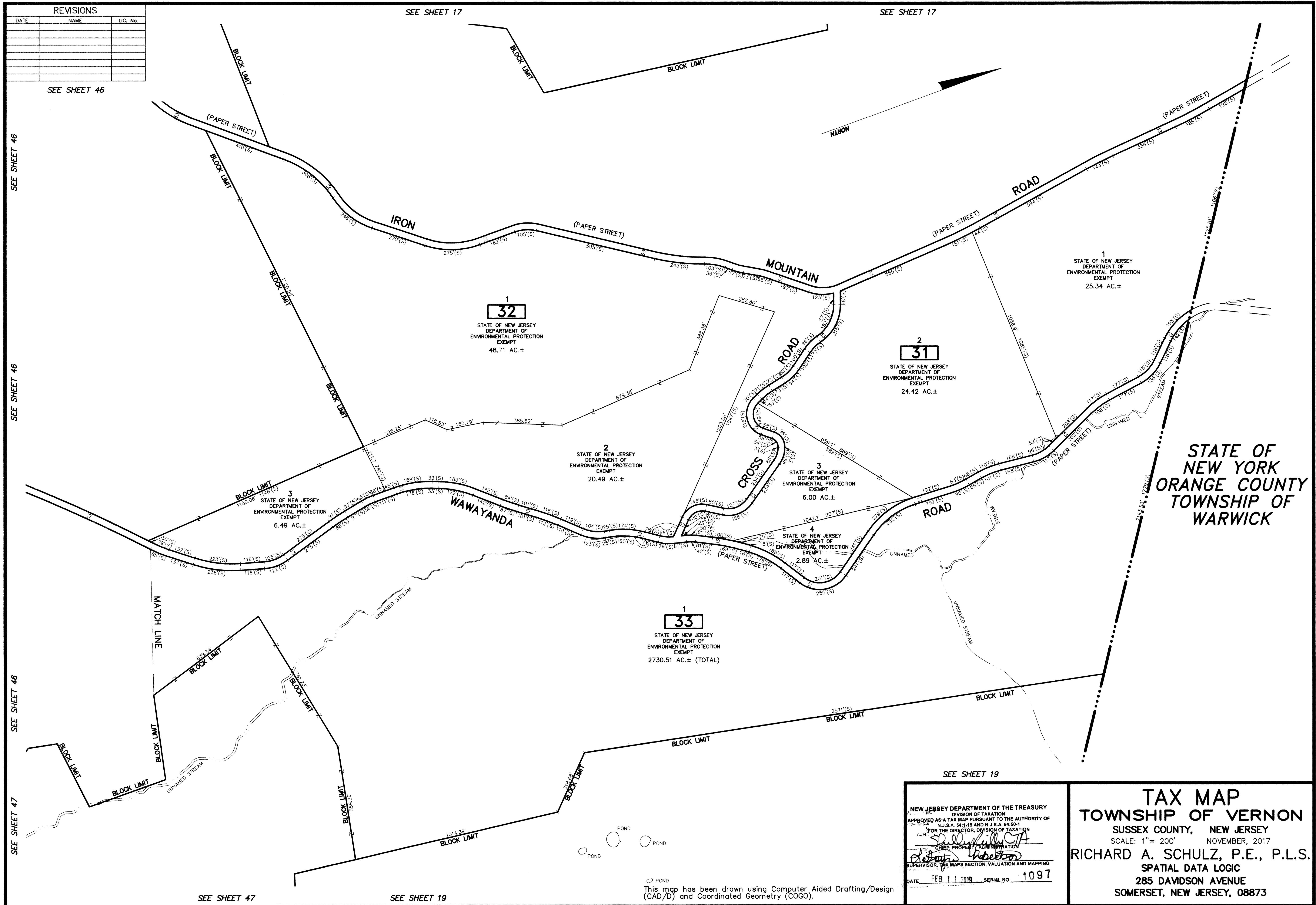
SEE SHEET 46

SEE SHEET 47

SEE SHEET 47

SEE SHEET 19

SEE SHEET 19



STATE OF  
NEW YORK  
ORANGE COUNTY  
TOWNSHIP OF  
WARWICK

NEW JERSEY DEPARTMENT OF THE TREASURY  
DIVISION OF TAXATION  
APPROVED AS A TAX MAP PURSUANT TO THE AUTHORITY OF  
N.J.S.A. 84:1-15 AND N.J.S.A. 84:50-1  
FOR THE DIRECTOR, DIVISION OF TAXATION  
*Richard A. Schulz*  
CHIEF, PROPERTY ADMINISTRATION  
*Robert*  
SUPERVISOR, TAX MAPS SECTION, VALUATION AND MAPPING  
DATE FEB 11 2019 SERIAL NO. 1097

**TAX MAP**  
**TOWNSHIP OF VERNON**  
SUSSEX COUNTY, NEW JERSEY  
SCALE: 1" = 200' NOVEMBER, 2017  
**RICHARD A. SCHULZ, P.E., P.L.S.**  
SPATIAL DATA LOGIC  
285 DAVIDSON AVENUE  
SOMERSET, NEW JERSEY, 08873

○ POND  
This map has been drawn using Computer Aided Drafting/Design (CAD/D) and Coordinated Geometry (COGO).