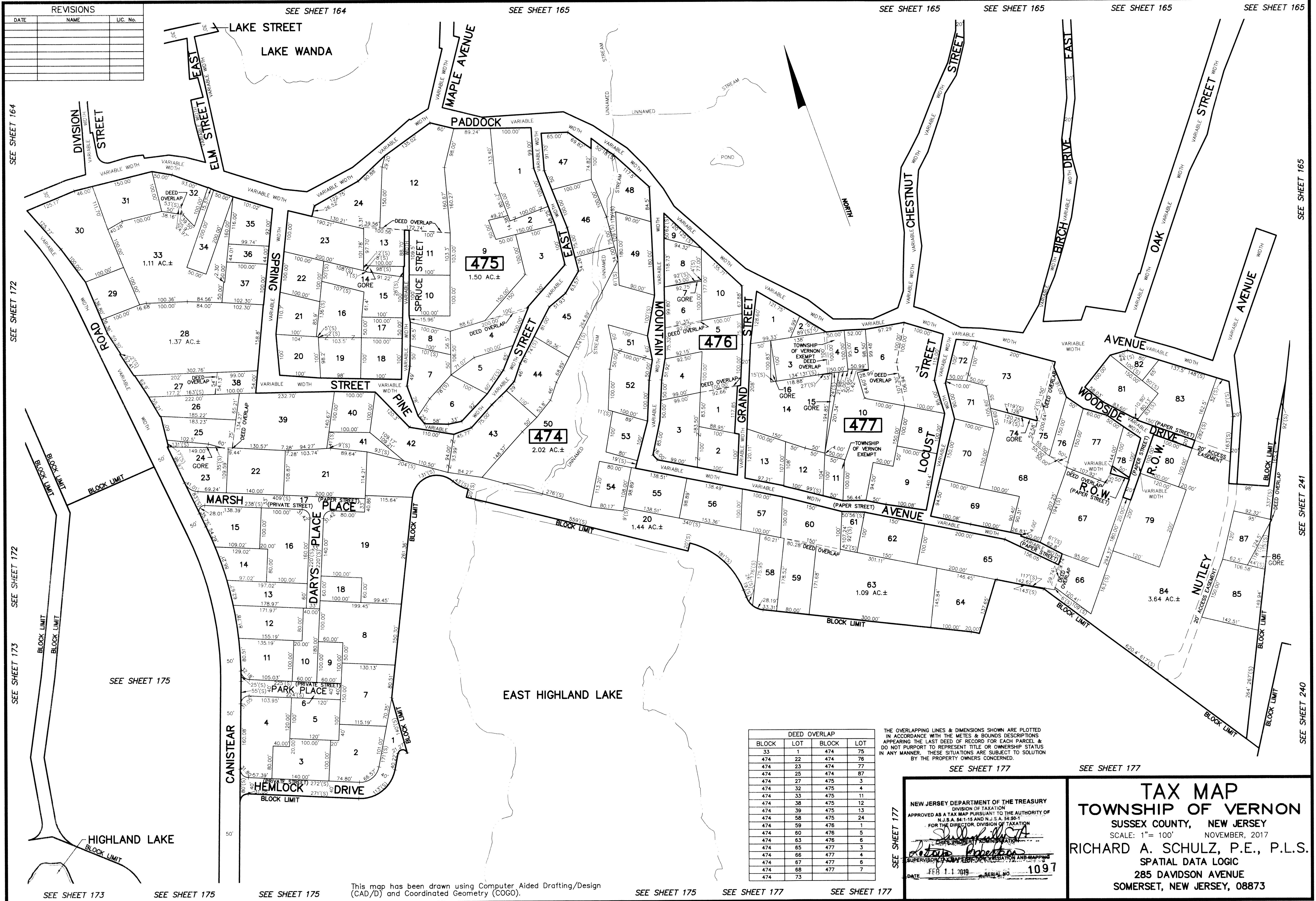


REVISIONS		
DATE	NAME	LIC. No.



DEED OVERLAP			
BLOCK	LOT	BLOCK	LOT
33	1	474	75
474	22	474	76
474	23	474	77
474	25	474	87
474	27	475	3
474	32	475	4
474	33	475	11
474	38	475	12
474	39	475	13
474	58	475	24
474	59	476	1
474	60	476	5
474	63	476	6
474	65	477	3
474	66	477	4
474	67	477	6
474	68	477	7
474	73		

THE OVERLAPPING LINES & DIMENSIONS SHOWN ARE PLOTTED IN ACCORDANCE WITH THE METES & BOUNDS DESCRIPTIONS APPEARING THE LAST DEED OF RECORD FOR EACH PARCEL & DO NOT PURPORT TO REPRESENT TITLE OR OWNERSHIP STATUS IN ANY MANNER. THESE SITUATIONS ARE SUBJECT TO SOLUTION BY THE PROPERTY OWNERS CONCERNED.

SEE SHEET 177

SEE SHEET 177

NEW JERSEY DEPARTMENT OF THE TREASURY
 DIVISION OF TAXATION
 APPROVED AS A TAX MAP PURSUANT TO THE AUTHORITY OF
 N.J.S.A. 54:1-15 AND N.J.S.A. 54:50-1
 FOR THE DIRECTOR, DIVISION OF TAXATION
Richard A. Schulz
 CHIEF PROPERTY ADMINISTRATION
Richard A. Schulz
 SUPERVISOR, TAX MAPS, RECORDS, REGULATION AND MAPPING
 DATE FEB 11 2010 SERIAL NO. 1097

TAX MAP
TOWNSHIP OF VERNON
 SUSSEX COUNTY, NEW JERSEY
 SCALE: 1" = 100' NOVEMBER, 2017
RICHARD A. SCHULZ, P.E., P.L.S.
 SPATIAL DATA LOGIC
 285 DAVIDSON AVENUE
 SOMERSET, NEW JERSEY, 08873

This map has been drawn using Computer Aided Drafting/Design (CAD/D) and Coordinated Geometry (COGO).

SEE SHEET 175

SEE SHEET 177

SEE SHEET 177