

REVISIONS		
DATE	NAME	LIC. No.

SEE SHEET 174

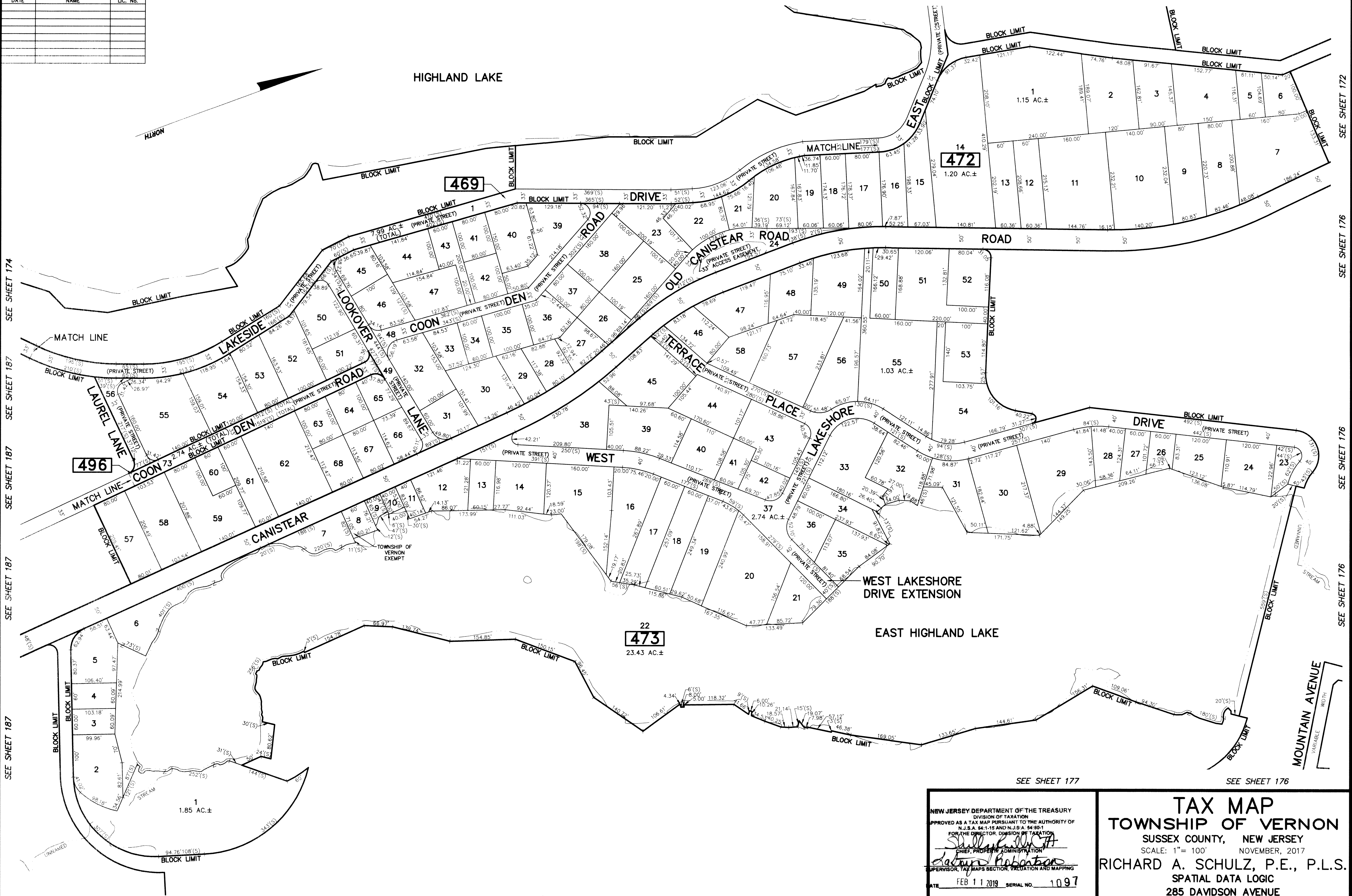
SEE SHEET 174

SEE SHEET 173

SEE SHEET 173

SEE SHEET 173

SEE SHEET 172



SEE SHEET 174
 SEE SHEET 187
 SEE SHEET 187
 SEE SHEET 187
 SEE SHEET 187

SEE SHEET 172
 SEE SHEET 176
 SEE SHEET 176
 SEE SHEET 176

SEE SHEET 187

SEE SHEET 177

SEE SHEET 177

SEE SHEET 177

SEE SHEET 177

SEE SHEET 176

NEW JERSEY DEPARTMENT OF THE TREASURY
 DIVISION OF TAXATION
 APPROVED AS A TAX MAP PURSUANT TO THE AUTHORITY OF
 N.J.S.A. 54:1-15 AND N.J.S.A. 54:80-1
 FOR THE DIRECTOR, DIVISION OF TAXATION
Richard A. Schulz
 CHIEF, PROPERTY ADMINISTRATION
Dalton Robertson
 SUPERVISOR, TAX MAPS SECTION, VALUATION AND MAPPING
 DATE FEB 11 2019 SERIAL NO. 1097

TAX MAP
TOWNSHIP OF VERNON
 SUSSEX COUNTY, NEW JERSEY
 SCALE: 1" = 100' NOVEMBER, 2017
RICHARD A. SCHULZ, P.E., P.L.S.
 SPATIAL DATA LOGIC
 285 DAVIDSON AVENUE
 SOMERSET, NEW JERSEY, 08873

This map has been drawn using Computer Aided Drafting/Design (CAD/D) and Coordinated Geometry (COGO).