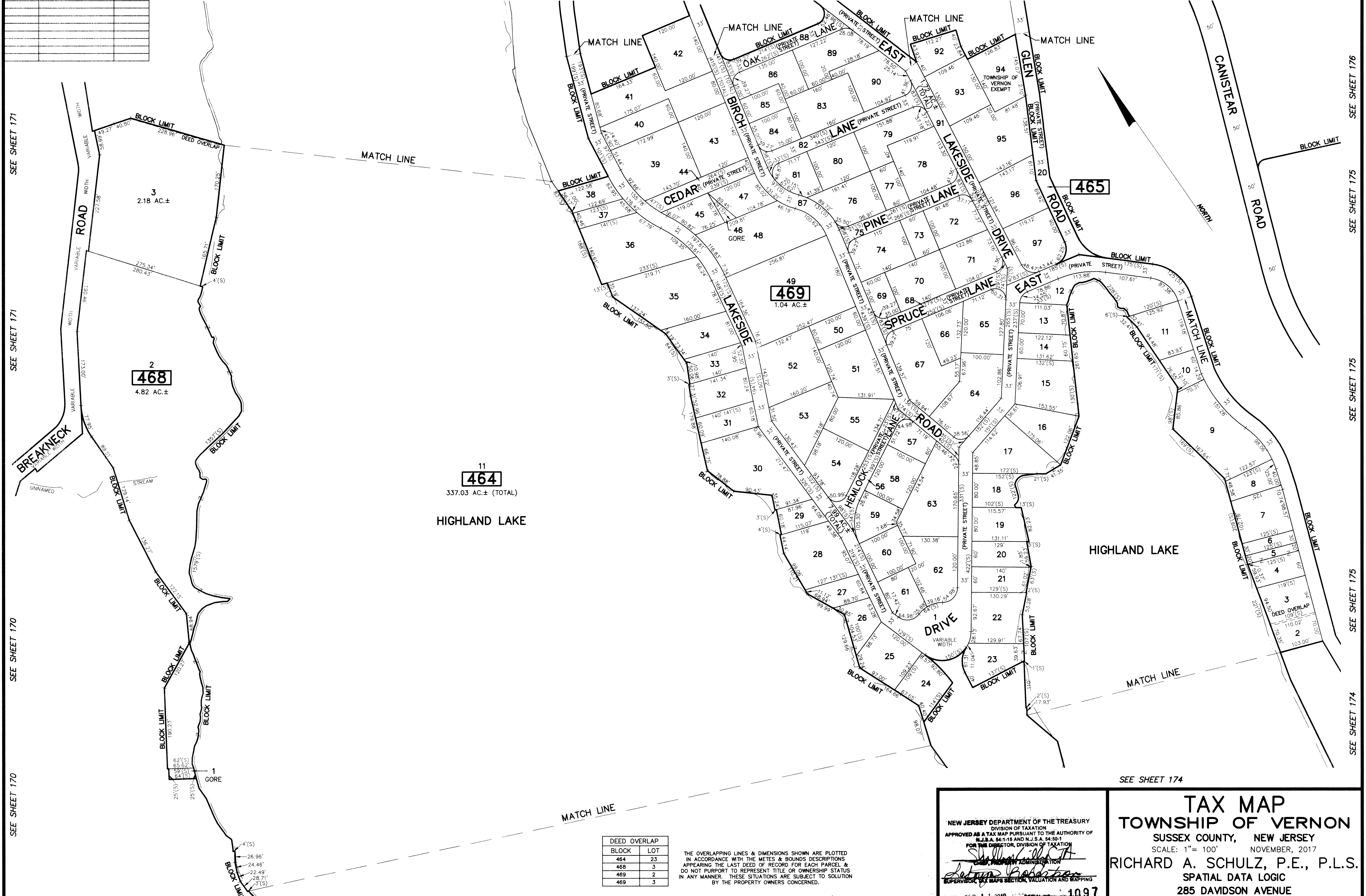


REVISIONS		
DATE	NAME	LIC. No.

SEE SHEET 172 SEE SHEET 172 SEE SHEET 172 SEE SHEET 172 SEE SHEET 175 SEE SHEET 176



SEE SHEET 171
SEE SHEET 171
SEE SHEET 170
SEE SHEET 170
SEE SHEET 170

SEE SHEET 176
SEE SHEET 175
SEE SHEET 175
SEE SHEET 174

SEE SHEET 170 SEE SHEET 170 SEE SHEET 174

DEED OVERLAP	
BLOCK	LOT
468	23
468	3
469	2
469	3

THE OVERLAPPING LINES & DIMENSIONS SHOWN ARE PLOTTED IN ACCORDANCE WITH THE METES & BOUNDS DESCRIPTIONS APPEARING IN THE LAST DEED OF RECORD FOR EACH PARCEL & DO NOT PURPORT TO REPRESENT TITLE OR OWNERSHIP STATUS IN ANY MANNER. THESE SITUATIONS ARE SUBJECT TO SOLUTION BY THE PROPERTY OWNERS CONCERNED.

This map has been drawn using Computer Aided Drafting/Design (CAD/D) and Coordinated Geometry (COGO). SEE SHEET 174

NEW JERSEY DEPARTMENT OF THE TREASURY
DIVISION OF TAXATION
APPROVED AS A TAX MAP PURSUANT TO THE AUTHORITY OF N.J.S.A. 54:1-15 AND N.J.S.A. 54:50-1 FOR THE DIRECTOR, DIVISION OF TAXATION

Shelley A. ...
CHIEF, PROPERTY ADMINISTRATION

Robert ...
SUPERVISOR, GIS MAPS SECTION, VALUATION AND MAPPING

DATE: FEB 11 2019 SERIAL NO: 1097

TAX MAP
TOWNSHIP OF VERNON
SUSSEX COUNTY, NEW JERSEY
SCALE: 1" = 100' NOVEMBER, 2017

RICHARD A. SCHULZ, P.E., P.L.S.
SPATIAL DATA LOGIC
285 DAVIDSON AVENUE
SOMERSET, NEW JERSEY, 08873