

REVISIONS		
DATE	NAME	LIC. No.

SEE SHEET 162

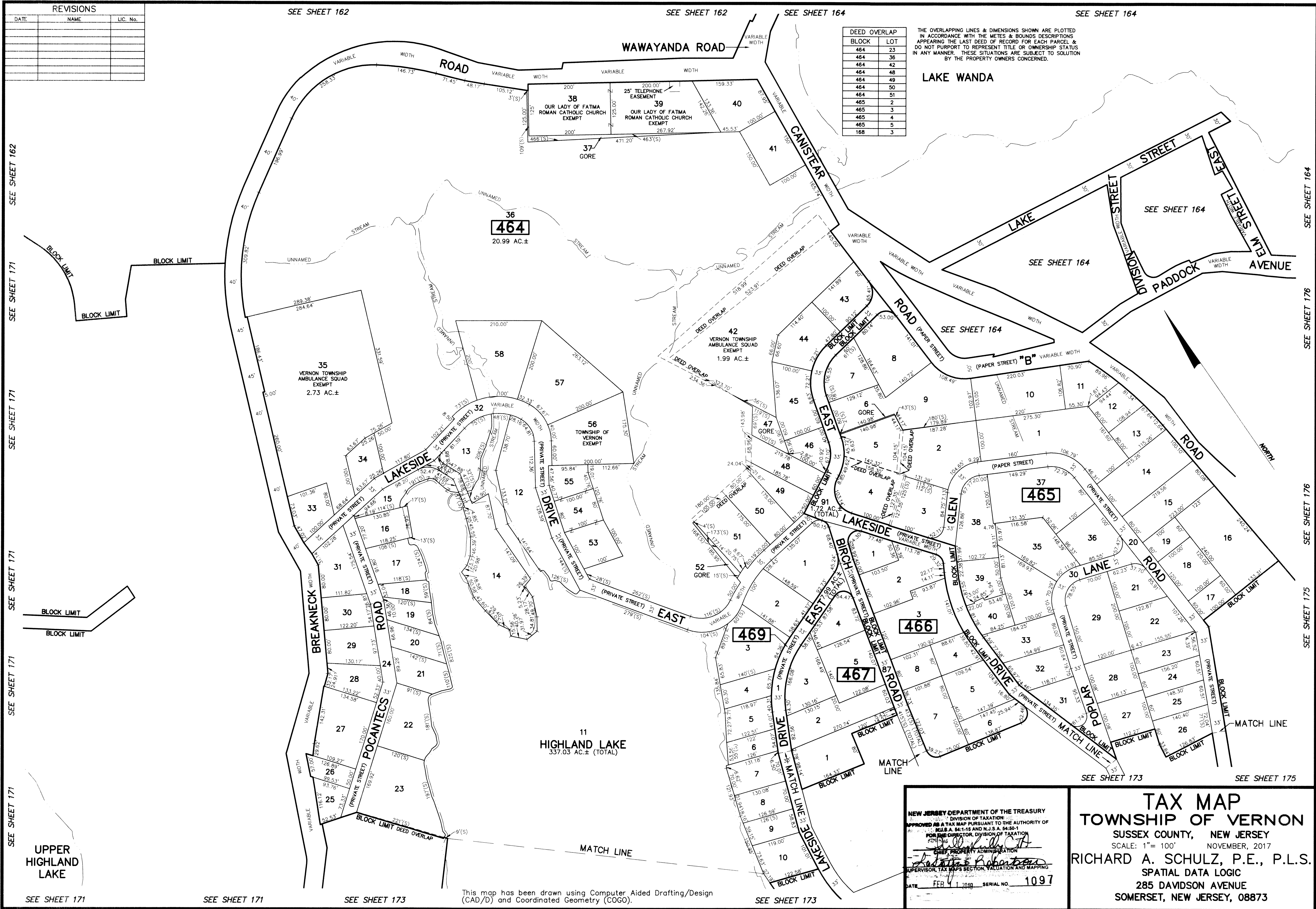
SEE SHEET 162

SEE SHEET 164

SEE SHEET 164

DEED OVERLAP	
BLOCK	LOT
464	23
464	36
464	42
464	48
464	49
464	50
464	51
465	2
465	3
465	4
465	5
168	3

THE OVERLAPPING LINES & DIMENSIONS SHOWN ARE PLOTTED IN ACCORDANCE WITH THE METES & BOUNDS DESCRIPTIONS APPEARING THE LAST DEED OF RECORD FOR EACH PARCEL & DO NOT PURPORT TO REPRESENT TITLE OR OWNERSHIP STATUS IN ANY MANNER. THESE SITUATIONS ARE SUBJECT TO SOLUTION BY THE PROPERTY OWNERS CONCERNED.



SEE SHEET 162

SEE SHEET 171

SEE SHEET 171

SEE SHEET 171

SEE SHEET 171

SEE SHEET 171

UPPER HIGHLAND LAKE

SEE SHEET 171

SEE SHEET 171

SEE SHEET 173

This map has been drawn using Computer Aided Drafting/Design (CAD/D) and Coordinated Geometry (COGO).

SEE SHEET 173

NEW JERSEY DEPARTMENT OF THE TREASURY
 DIVISION OF TAXATION
 APPROVED AS A TAX MAP PURSUANT TO THE AUTHORITY OF
 P.L.S. 84-115 AND N.J.S.A. 54:2-1
 FOR THE DIRECTOR, DIVISION OF TAXATION
[Signature]
 CHIEF PROPERTY ADMINISTRATION
 SUPERVISOR, TAX MAPS SECTION, VALUATION AND MAPPING
 DATE FEB 11 2018 SERIAL NO. 1097

TAX MAP
TOWNSHIP OF VERNON
 SUSSEX COUNTY, NEW JERSEY
 SCALE: 1"= 100' NOVEMBER, 2017
 RICHARD A. SCHULZ, P.E., P.L.S.
 SPATIAL DATA LOGIC
 285 DAVIDSON AVENUE
 SOMERSET, NEW JERSEY, 08873

SEE SHEET 173

SEE SHEET 175

SEE SHEET 164

SEE SHEET 176

SEE SHEET 176

SEE SHEET 175