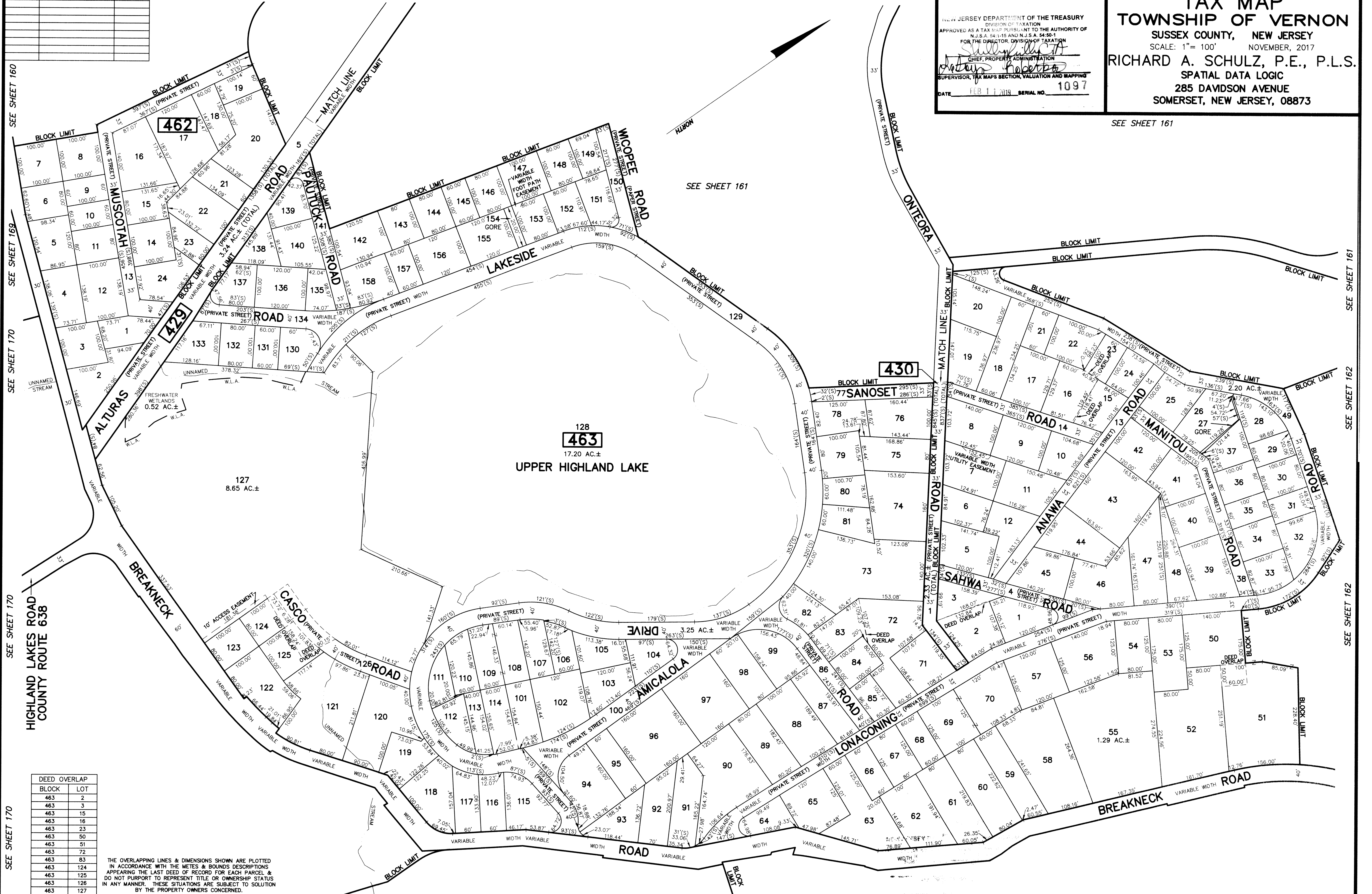


REVISIONS		
DATE	NAME	LIC. No.

SEE SHEET 160 SEE SHEET 161 SEE SHEET 161 SEE SHEET 161

NEW JERSEY DEPARTMENT OF THE TREASURY
 DIVISION OF TAXATION
 APPROVED AS A TAX MAP PURSUANT TO THE AUTHORITY OF
 N.J.S.A. 54:1-15 AND N.J.S.A. 54:50-1
 FOR THE DIRECTOR, DIVISION OF TAXATION
[Signature]
 CHIEF, PROPERTY ADMINISTRATION
[Signature]
 SUPERVISOR, TAX MAPS SECTION, VALUATION AND MAPPING
 DATE: FEB 11 2018 SERIAL NO. 1097

TAX MAP
TOWNSHIP OF VERNON
 SUSSEX COUNTY, NEW JERSEY
 SCALE: 1" = 100' NOVEMBER, 2017
RICHARD A. SCHULZ, P.E., P.L.S.
 SPATIAL DATA LOGIC
 285 DAVIDSON AVENUE
 SOMERSET, NEW JERSEY, 08873



DEED OVERLAP	
BLOCK	LOT
463	2
463	3
463	15
463	16
463	23
463	50
463	51
463	72
463	83
463	124
463	125
463	126
463	127

THE OVERLAPPING LINES & DIMENSIONS SHOWN ARE PLOTTED IN ACCORDANCE WITH THE METES & BOUNDS DESCRIPTIONS APPEARING THE LAST DEED OF RECORD FOR EACH PARCEL & DO NOT PURPORT TO REPRESENT TITLE OR OWNERSHIP STATUS IN ANY MANNER. THESE SITUATIONS ARE SUBJECT TO SOLUTION BY THE PROPERTY OWNERS CONCERNED.

This map has been drawn using Computer Aided Drafting/Design (CAD/D) and Coordinated Geometry (COGO). SEE SHEET 173 SEE SHEET 172

SEE SHEET 169
SEE SHEET 170
SEE SHEET 170
SEE SHEET 170
SEE SHEET 170

SEE SHEET 161
SEE SHEET 161
SEE SHEET 161
SEE SHEET 162
SEE SHEET 162
SEE SHEET 162