

SEE SHEET 169

SEE SHEET 169

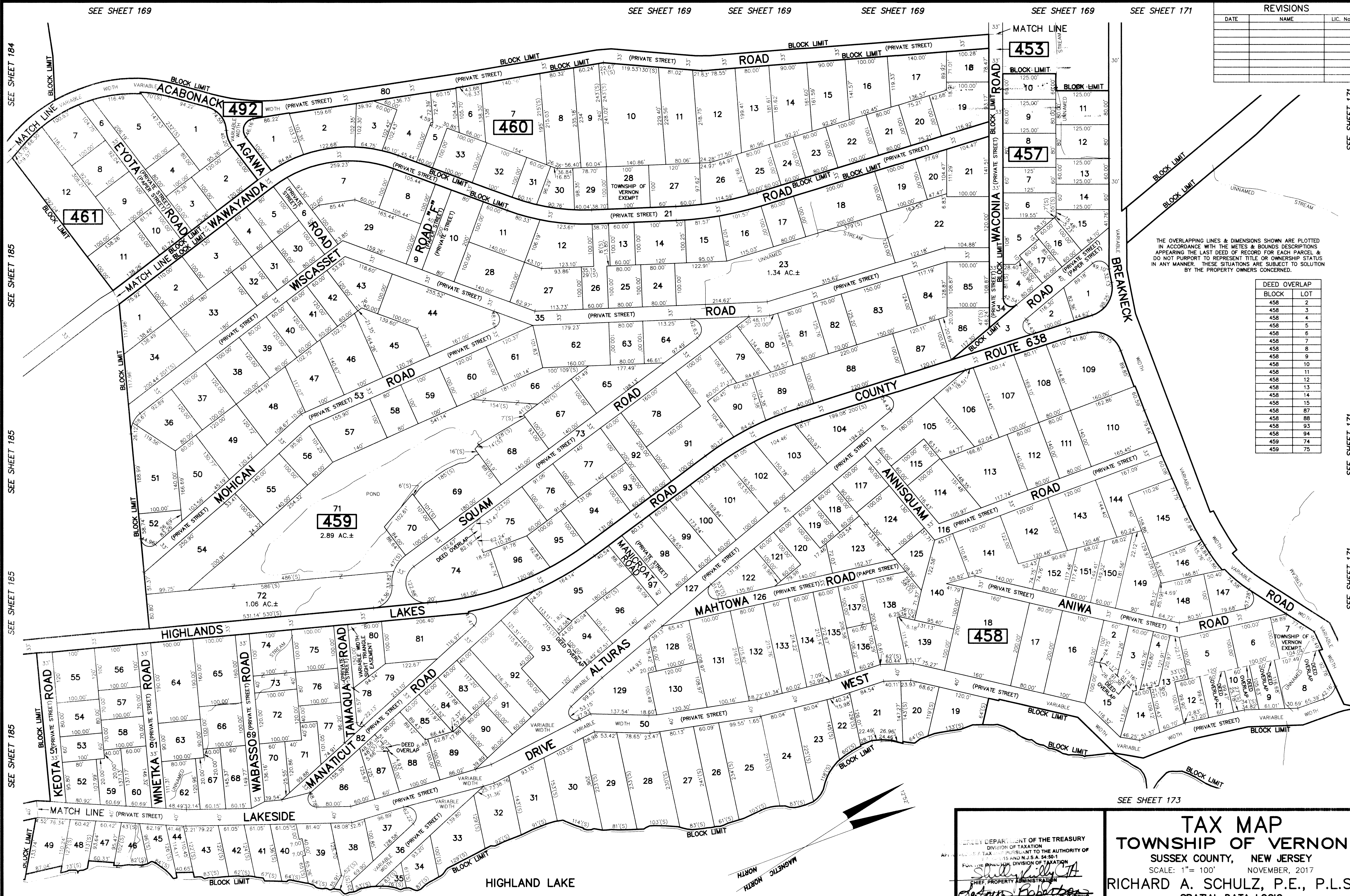
SEE SHEET 169

SEE SHEET 169

SEE SHEET 169

SEE SHEET 171

REVISIONS		
DATE	NAME	LIC. No.



THE OVERLAPPING LINES & DIMENSIONS SHOWN ARE PLOTTED IN ACCORDANCE WITH THE METES & BOUNDS DESCRIPTIONS APPEARING THE LAST DEED OF RECORD FOR EACH PARCEL & DO NOT PURPORT TO REPRESENT TITLE OR OWNERSHIP STATUS IN ANY MANNER. THESE SITUATIONS ARE SUBJECT TO SOLUTION BY THE PROPERTY OWNERS CONCERNED.

DEED OVERLAP	BLOCK	LOT
	458	2
	458	3
	458	4
	458	5
	458	6
	458	7
	458	8
	458	9
	458	10
	458	11
	458	12
	458	13
	458	14
	458	15
	458	87
	458	88
	458	93
	458	94
	459	74
	459	75

SEE SHEET 184

SEE SHEET 185

SEE SHEET 185

SEE SHEET 185

SEE SHEET 185

SEE SHEET 171

SEE SHEET 171

SEE SHEET 171

SEE SHEET 174

This map has been drawn using Computer Aided Drafting/Design (CAD/D) and Coordinated Geometry (COGO).

SEE SHEET 174

SEE SHEET 173

STATE DEPARTMENT OF THE TREASURY
 DIVISION OF TAXATION
 PURSUANT TO THE AUTHORITY OF
 N.J.S.A. 54:50-1
 FOR THE PROPERTY TAX DIVISION OF TAXATION
Shelly Kelly
 CHIEF, PROPERTY ADMINISTRATION
Christy Pabon
 SUPERVISOR, TAX MAPS SECTION, VALUATION AND MAPPING
 DATE: FEB 11 2019 SERIAL NO. 091

TAX MAP
TOWNSHIP OF VERNON
 SUSSEX COUNTY, NEW JERSEY
 SCALE: 1" = 100' NOVEMBER, 2017
RICHARD A. SCHULZ, P.E., P.L.S.
 SPATIAL DATA LOGIC
 285 DAVIDSON AVENUE
 SOMERSET, NEW JERSEY, 08873