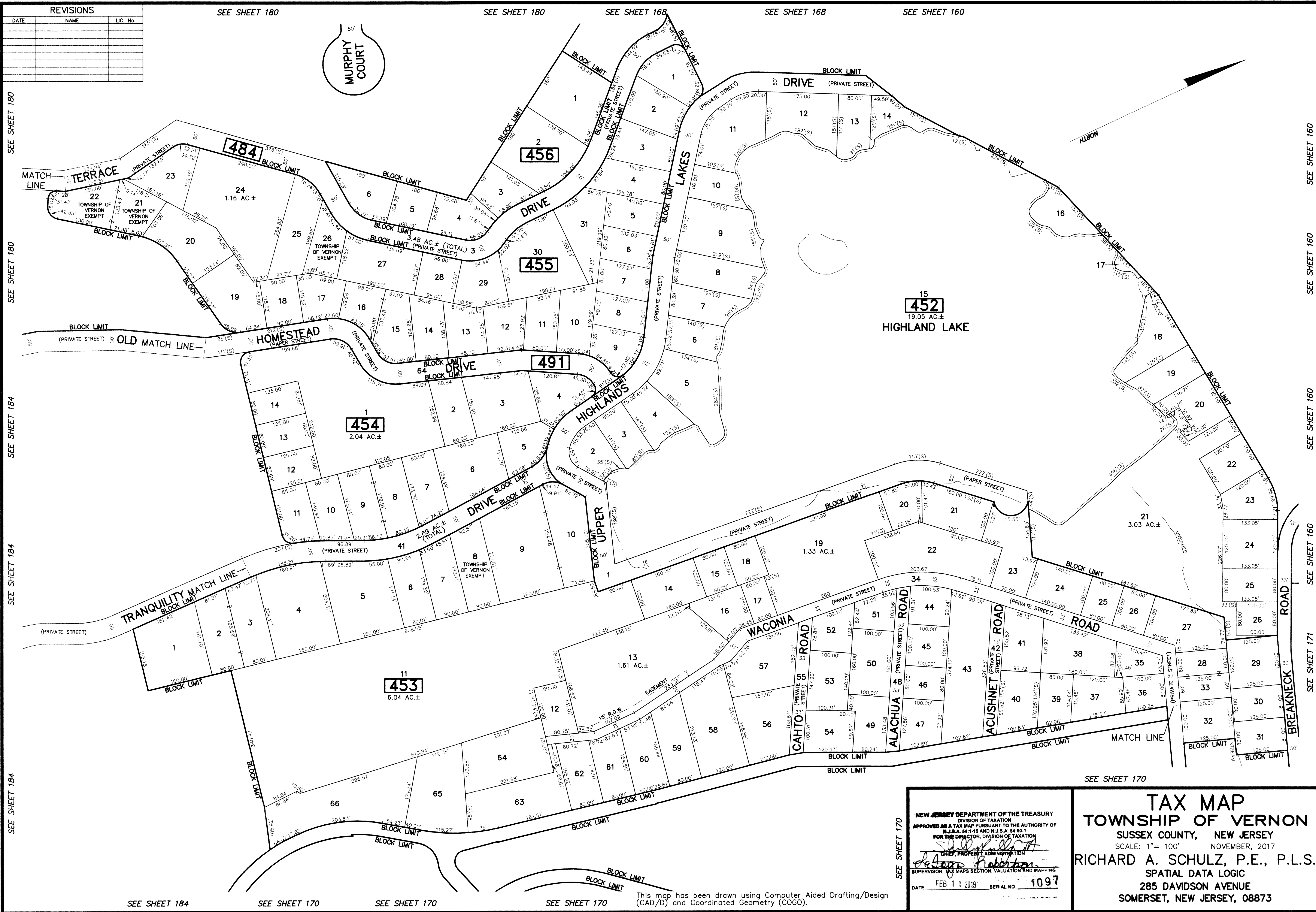


REVISIONS		
DATE	NAME	LC. No.



NEW JERSEY DEPARTMENT OF THE TREASURY
DIVISION OF TAXATION
 APPROVED AS A TAX MAP PURSUANT TO THE AUTHORITY OF
 N.J.S.A. 54:1-15 AND N.J.S.A. 54:5-1
 FOR THE DIRECTOR, DIVISION OF TAXATION

Richard A. Schulz, P.E., P.L.S.
 SUPERVISOR, MAPS SECTION, VALUATION AND MAPPING

DATE: FEB 11 2019 SERIAL NO. 1097

TAX MAP
TOWNSHIP OF VERNON
 SUSSEX COUNTY, NEW JERSEY
 SCALE: 1" = 100' NOVEMBER, 2017
RICHARD A. SCHULZ, P.E., P.L.S.
 SPATIAL DATA LOGIC
 285 DAVIDSON AVENUE
 SOMERSET, NEW JERSEY, 08873

This map has been drawn using Computer Aided Drafting/Design (CAD/D) and Coordinated Geometry (COGO).