

REVISIONS		
DATE	NAME	LIC. No.

SEE SHEET 167

SEE SHEET 167

SEE SHEET 157

SEE SHEET 157

HIDDEN VALLEY LAKE

SEE SHEET 167

SEE SHEET 180

SEE SHEET 180

SEE SHEET 180

SEE SHEET 169

SEE SHEET 169

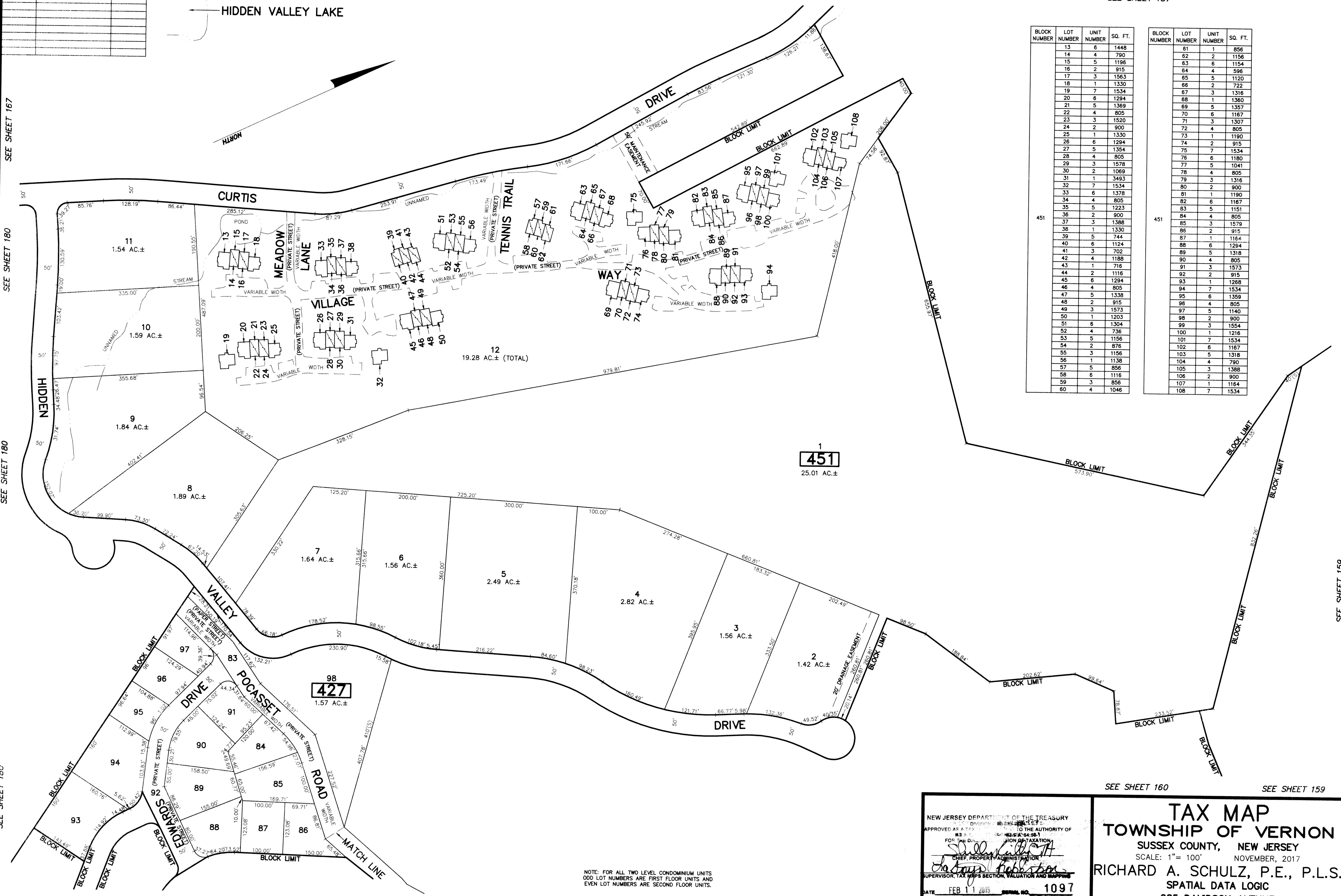
SEE SHEET 169

SEE SHEET 160

SEE SHEET 160

SEE SHEET 157

SEE SHEET 159



BLOCK NUMBER	LOT NUMBER	UNIT NUMBER	SQ. FT.
451	13	6	1448
	14	4	780
	15	5	1196
	16	2	915
	17	3	1563
	18	1	1330
	19	7	1534
	20	6	1294
	21	5	1369
	22	4	805
	23	3	1520
	24	2	900
	25	1	1330
	26	6	1294
	27	5	1354
	28	4	805
	29	3	1578
	30	2	1069
	31	1	3493
	32	7	1534
	33	6	1378
	34	4	805
	35	5	1223
	36	2	900
	37	3	1388
	38	1	1330
	39	5	744
	40	6	1124
	41	3	702
	42	4	1188
	43	1	716
	44	2	1116
	45	8	1294
	46	4	805
	47	5	1338
	48	2	915
	49	3	1573
	50	1	1203
	51	8	1304
	52	4	736
	53	5	1156
	54	2	876
	55	3	1156
	56	1	1138
	57	5	856
	58	6	1116
	59	3	856
	60	4	1046

BLOCK NUMBER	LOT NUMBER	UNIT NUMBER	SQ. FT.
451	61	1	856
	62	2	1156
	63	6	1154
	64	4	596
	65	5	1120
	66	2	722
	67	3	1316
	68	1	1360
	69	5	1357
	70	6	1167
	71	3	1307
	72	4	805
	73	1	1190
	74	2	915
	75	7	1534
	76	6	1180
	77	5	1041
	78	4	805
	79	3	1316
	80	2	900
	81	1	1190
	82	6	1167
	83	5	1151
	84	4	805
	85	3	1579
	86	2	915
	87	1	1164
	88	6	1294
	89	5	1318
	90	4	805
	91	3	1573
	92	2	915
	93	1	1288
	94	7	1534
	95	6	1359
	96	4	805
	97	5	1140
	98	2	900
	99	3	1554
	100	1	1216
	101	7	1534
	102	6	1167
	103	5	1318
	104	4	790
	105	3	1388
	106	2	900
	107	1	1154
	108	7	1534

1
451
25.01 AC.±

98
427
1.57 AC.±

NOTE: FOR ALL TWO LEVEL CONDOMINIUM UNITS
ODD LOT NUMBERS ARE FIRST FLOOR UNITS AND
EVEN LOT NUMBERS ARE SECOND FLOOR UNITS.

This map has been drawn using Computer Aided Drafting/Design
(CAD/D) and Coordinated Geometry (COGO).

NEW JERSEY DEPARTMENT OF THE TREASURY
DIVISION OF TAXATION
APPROVED AS A TAX MAP TO THE AUTHORITY OF
THE SUPERVISOR OF TAXATION
FOR THE DIVISION OF TAXATION
CHIEF, PROPERTY ADMINISTRATION
SUPERVISOR, TAX MAPS SECTION, VALUATION AND MAPPING
DATE FEB 11 2015 SERIAL NO. 1097

TAX MAP
TOWNSHIP OF VERNON
SUSSEX COUNTY, NEW JERSEY
SCALE: 1" = 100'
NOVEMBER, 2017
RICHARD A. SCHULZ, P.E., P.L.S.
SPATIAL DATA LOGIC
285 DAVIDSON AVENUE
SOMERSET, NEW JERSEY, 08873