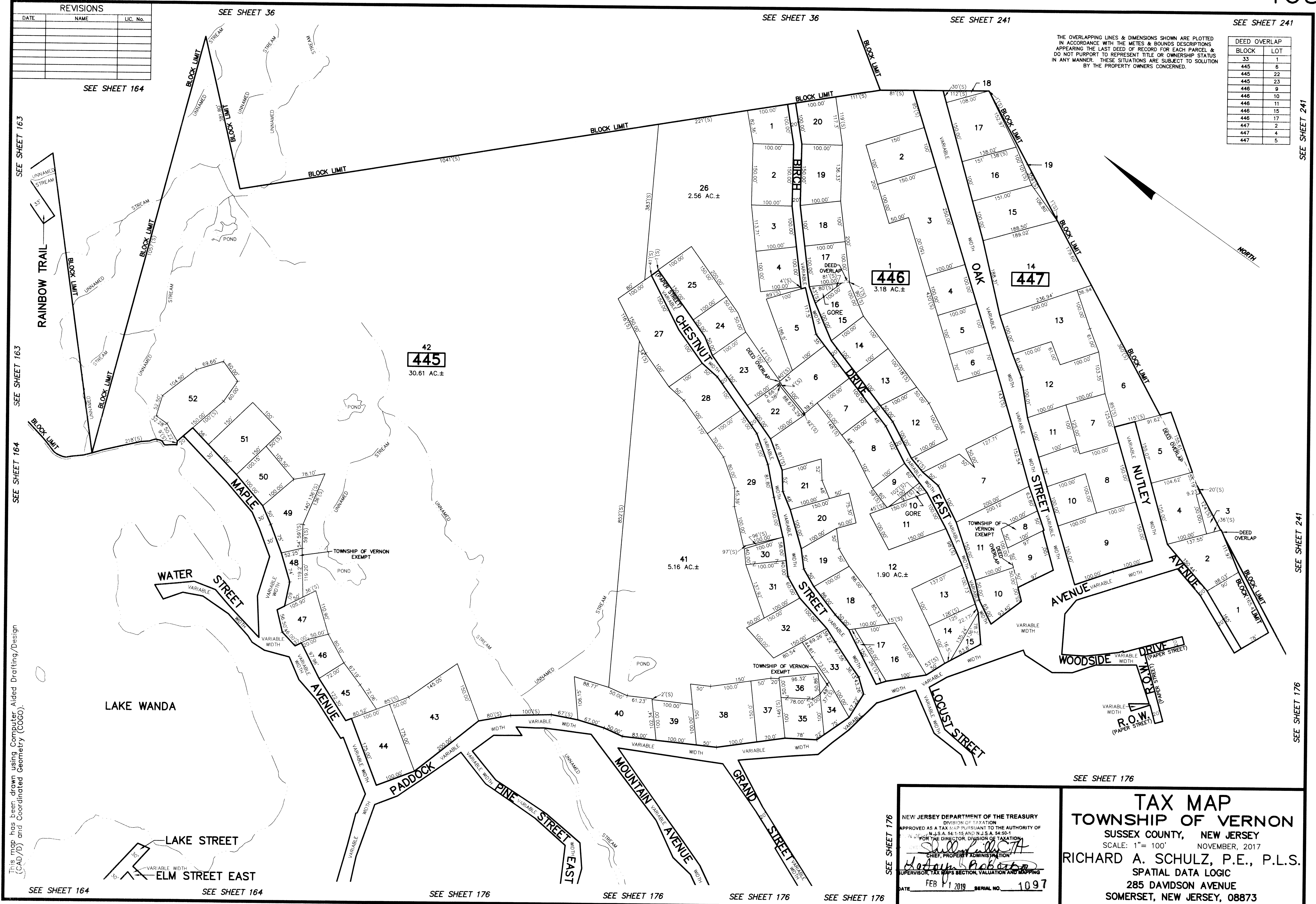


REVISIONS		
DATE	NAME	LIC. No.

THE OVERLAPPING LINES & DIMENSIONS SHOWN ARE PLOTTED IN ACCORDANCE WITH THE METES & BOUNDS DESCRIPTIONS APPEARING THE LAST DEED OF RECORD FOR EACH PARCEL & DO NOT PURPORT TO REPRESENT TITLE OR OWNERSHIP STATUS IN ANY MANNER. THESE SITUATIONS ARE SUBJECT TO SOLUTION BY THE PROPERTY OWNERS CONCERNED.

DEED OVERLAP	
BLOCK	LOT
33	1
445	6
445	22
445	23
446	9
446	10
446	11
446	15
446	17
447	2
447	4
447	5



This map has been drawn using Computer Aided Drafting/Design (CAD/D) and Coordinated Geometry (COGO).

SEE SHEET 164

SEE SHEET 164

SEE SHEET 176

SEE SHEET 176

SEE SHEET 176

SEE SHEET 176

SEE SHEET 176

NEW JERSEY DEPARTMENT OF THE TREASURY
DIVISION OF TAXATION
APPROVED AS A TAX MAP PURSUANT TO THE AUTHORITY OF
N.J.S.A. 54:1-15 AND N.J.S.A. 54:50-1
FOR THE DIRECTOR, DIVISION OF TAXATION

Richard A. Schulz
CHIEF, PROPERTY ADMINISTRATION

Richard A. Schulz
SUPERVISOR, TAX MAPS SECTION, VALUATION AND MAPPING

DATE FEB 1 2019 SERIAL NO. 1097

SEE SHEET 176

TAX MAP
TOWNSHIP OF VERNON
SUSSEX COUNTY, NEW JERSEY
SCALE: 1" = 100' NOVEMBER, 2017
RICHARD A. SCHULZ, P.E., P.L.S.
SPATIAL DATA LOGIC
285 DAVIDSON AVENUE
SOMERSET, NEW JERSEY, 08873