

REVISIONS		
DATE	NAME	LIC. No.

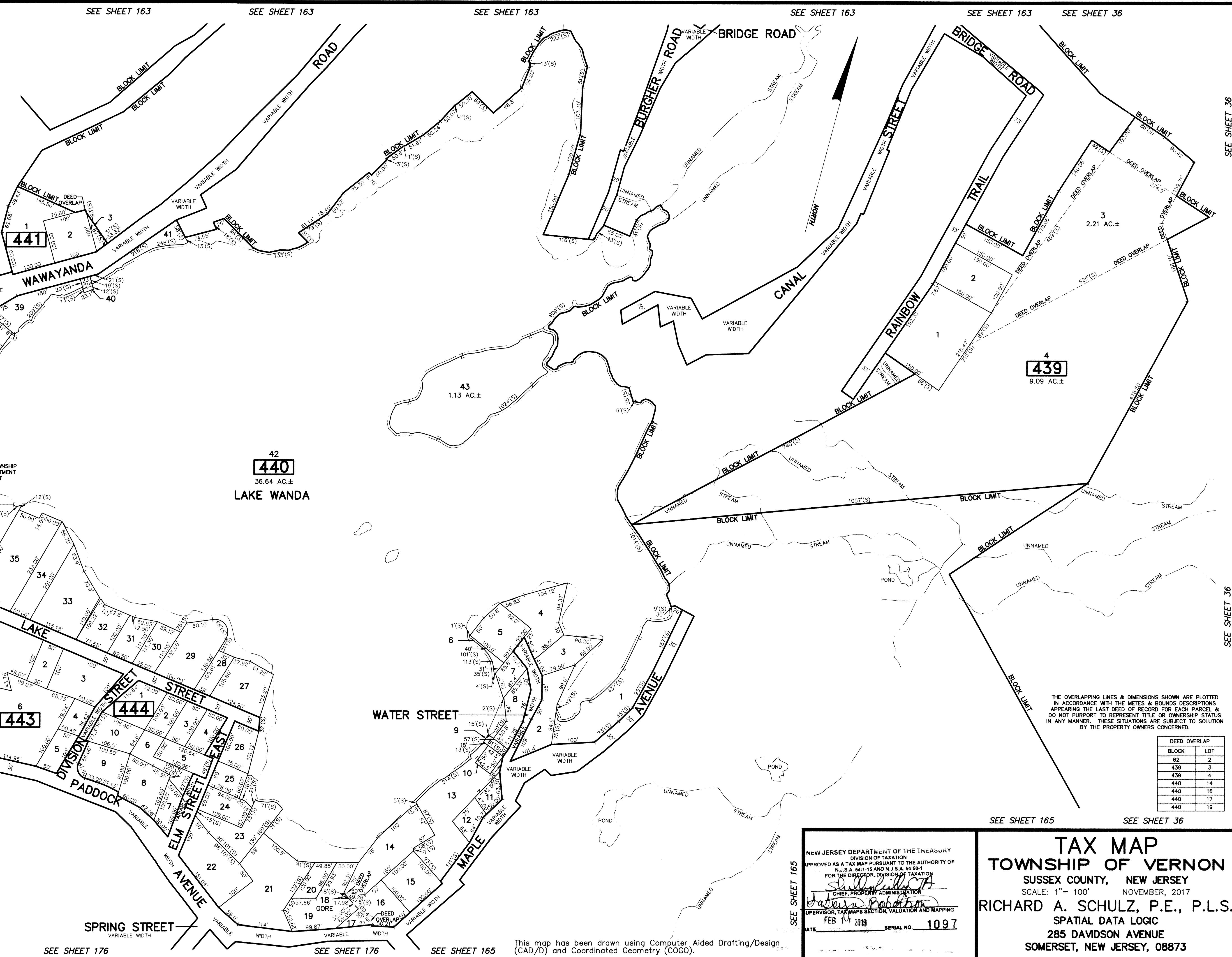
SEE SHEET 162

SEE SHEET 172

SEE SHEET 172

SEE SHEET 172

SEE SHEET 172



SEE SHEET 36

SEE SHEET 36

THE OVERLAPPING LINES & DIMENSIONS SHOWN ARE PLOTTED IN ACCORDANCE WITH THE METES & BOUNDS DESCRIPTIONS APPEARING THE LAST DEED OF RECORD FOR EACH PARCEL & DO NOT PURPORT TO REPRESENT TITLE OR OWNERSHIP STATUS IN ANY MANNER. THESE SITUATIONS ARE SUBJECT TO SOLUTION BY THE PROPERTY OWNERS CONCERNED.

BLOCK	LOT
439	2
439	3
440	4
440	14
440	16
440	17
440	19

SEE SHEET 165

SEE SHEET 36

NEW JERSEY DEPARTMENT OF THE TREASURY
 DIVISION OF TAXATION
 APPROVED AS A TAX MAP PURSUANT TO THE AUTHORITY OF
 N.J.S.A. 54:1-15 AND N.J.S.A. 54:50-1
 FOR THE DIRECTOR, DIVISION OF TAXATION
Susan M. CTA
 CHIEF, PROPERTY ADMINISTRATION
Janeen Robathan
 SUPERVISOR, TAX MAPS SECTION, VALUATION AND MAPPING
 DATE FEB 14 2019 SERIAL NO. 1097

TAX MAP
TOWNSHIP OF VERNON
 SUSSEX COUNTY, NEW JERSEY
 SCALE: 1" = 100' NOVEMBER, 2017
 RICHARD A. SCHULZ, P.E., P.L.S.
 SPATIAL DATA LOGIC
 285 DAVIDSON AVENUE
 SOMERSET, NEW JERSEY, 08873

This map has been drawn using Computer Aided Drafting/Design (CAD/D) and Coordinated Geometry (COGO).