

REVISIONS		
DATE	NAME	LIC. No.

SEE SHEET 36

This map has been drawn using Computer Aided Drafting/Design (CAD/D) and Coordinated Geometry (COGO).

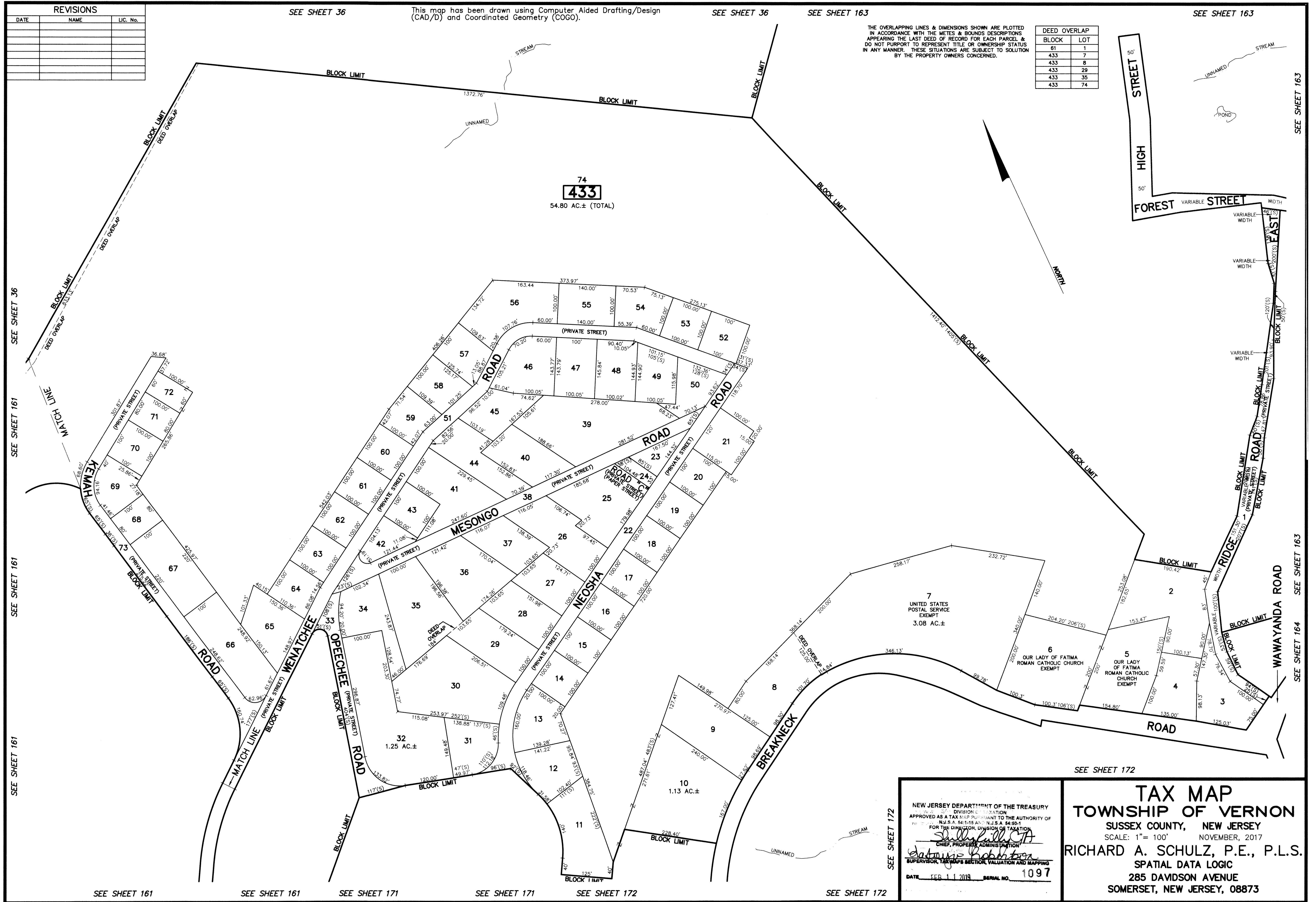
SEE SHEET 36

SEE SHEET 163

SEE SHEET 163

THE OVERLAPPING LINES & DIMENSIONS SHOWN ARE PLOTTED IN ACCORDANCE WITH THE METES & BOUNDS DESCRIPTIONS APPEARING THE LAST DEED OF RECORD FOR EACH PARCEL & DO NOT PURPORT TO REPRESENT TITLE OR OWNERSHIP STATUS IN ANY MANNER. THESE SITUATIONS ARE SUBJECT TO SOLUTION BY THE PROPERTY OWNERS CONCERNED.

DEED OVERLAP	
BLOCK	LOT
61	1
433	7
433	8
433	29
433	35
433	74



SEE SHEET 36

SEE SHEET 161

SEE SHEET 161

SEE SHEET 161

SEE SHEET 161

SEE SHEET 161

SEE SHEET 171

SEE SHEET 171

SEE SHEET 172

SEE SHEET 172

SEE SHEET 172

SEE SHEET 172

SEE SHEET 164

SEE SHEET 163

NEW JERSEY DEPARTMENT OF THE TREASURY
 DIVISION OF TAXATION
 APPROVED AS A TAX MAP PURSUANT TO THE AUTHORITY OF
 N.J.S.A. 54:1-15 AND N.J.S.A. 54:50-1
 FOR THE DIRECTOR, DIVISION OF TAXATION
Shelly Kull, CA
 CHIEF, PROPERTY ADMINISTRATION
Richard A. Schulz, P.E., P.L.S.
 SUPERVISOR, TAX MAPS SECTION, VALUATION AND MAPPING
 DATE: FEB 11 2018 SERIAL NO. 1097

TAX MAP
TOWNSHIP OF VERNON
 SUSSEX COUNTY, NEW JERSEY
 SCALE: 1" = 100' NOVEMBER, 2017
RICHARD A. SCHULZ, P.E., P.L.S.
 SPATIAL DATA LOGIC
 285 DAVIDSON AVENUE
 SOMERSET, NEW JERSEY, 08873