

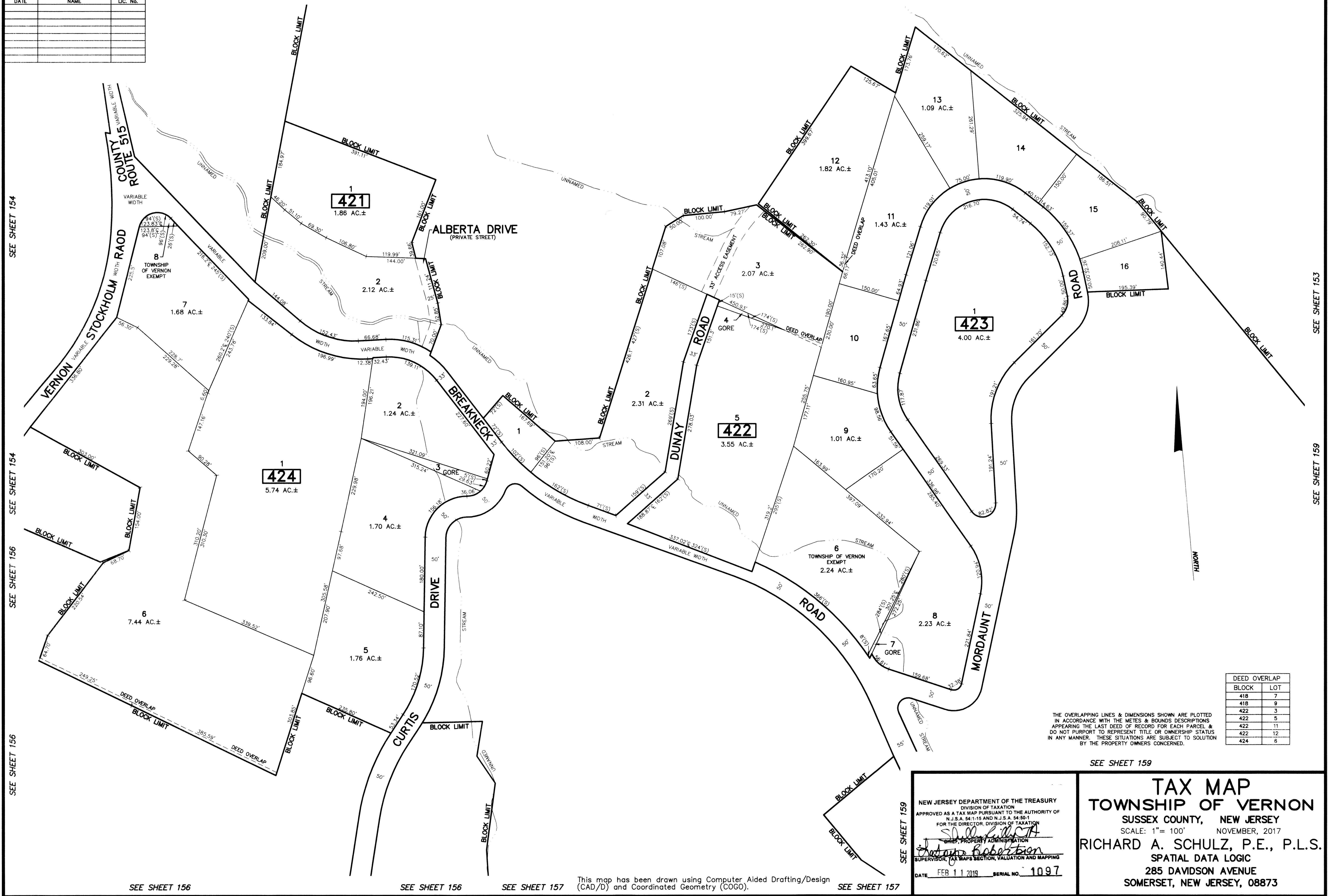
REVISIONS		
DATE	NAME	LIC. No.

SEE SHEET 154

SEE SHEET 153

SEE SHEET 153

SEE SHEET 153



SEE SHEET 154

SEE SHEET 154

SEE SHEET 156

SEE SHEET 156

SEE SHEET 153

SEE SHEET 159

SEE SHEET 156

SEE SHEET 156

SEE SHEET 157

This map has been drawn using Computer Aided Drafting/Design (CAD/D) and Coordinated Geometry (COGO).

SEE SHEET 157

SEE SHEET 159

SEE SHEET 159

NEW JERSEY DEPARTMENT OF THE TREASURY
 DIVISION OF TAXATION
 APPROVED AS A TAX MAP PURSUANT TO THE AUTHORITY OF
 N.J.S.A. 54:1-15 AND N.J.S.A. 54:50-1
 FOR THE DIRECTOR, DIVISION OF TAXATION
Richard A. Schulz
 SUPERVISOR, TAX MAPS SECTION, VALUATION AND MAPPING
 DATE FEB 11 2019 SERIAL NO. 1097

TAX MAP
TOWNSHIP OF VERNON
 SUSSEX COUNTY, NEW JERSEY
 SCALE: 1" = 100' NOVEMBER, 2017
RICHARD A. SCHULZ, P.E., P.L.S.
 SPATIAL DATA LOGIC
 285 DAVIDSON AVENUE
 SOMERSET, NEW JERSEY, 08873

DEED OVERLAP	
BLOCK	LOT
418	7
418	9
422	3
422	5
422	11
422	12
424	6

THE OVERLAPPING LINES & DIMENSIONS SHOWN ARE PLOTTED IN ACCORDANCE WITH THE METES & BOUNDS DESCRIPTIONS APPEARING THE LAST DEED OF RECORD FOR EACH PARCEL & DO NOT PURPORT TO REPRESENT TITLE OR OWNERSHIP STATUS IN ANY MANNER. THESE SITUATIONS ARE SUBJECT TO SOLUTION BY THE PROPERTY OWNERS CONCERNED.

