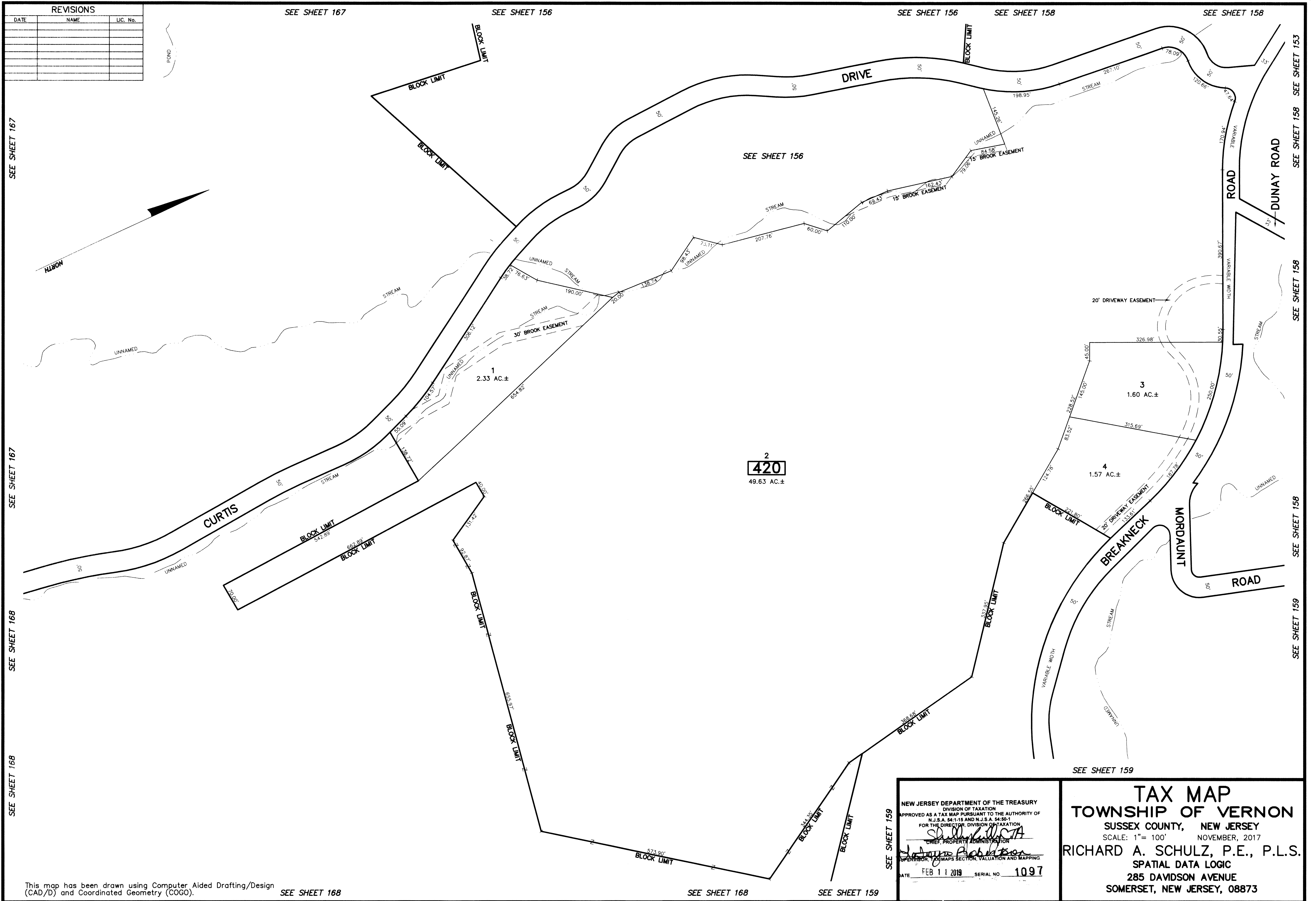


REVISIONS		
DATE	NAME	LIC. No.



SEE SHEET 167

SEE SHEET 167

SEE SHEET 168

SEE SHEET 168

SEE SHEET 167

SEE SHEET 156

SEE SHEET 156

SEE SHEET 158

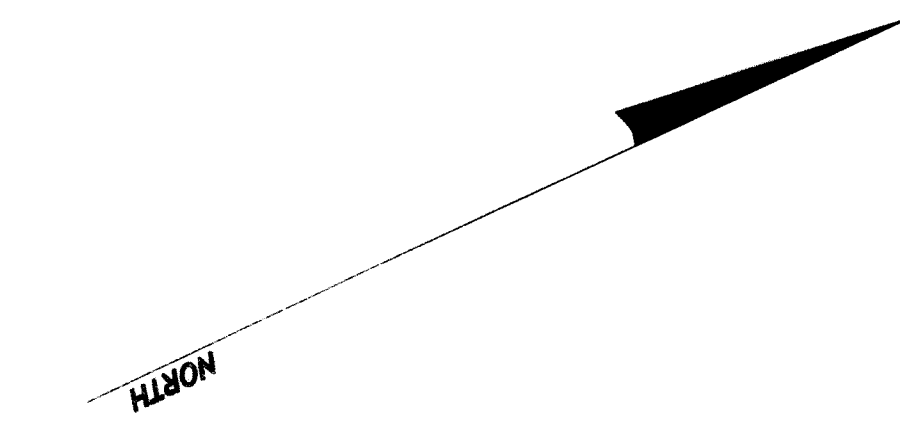
SEE SHEET 158

SEE SHEET 158

SEE SHEET 158

SEE SHEET 158

SEE SHEET 159



2  
**420**  
 49.63 AC.±

This map has been drawn using Computer Aided Drafting/Design (CAD/D) and Coordinated Geometry (COGO). SEE SHEET 168

SEE SHEET 168

SEE SHEET 159

NEW JERSEY DEPARTMENT OF THE TREASURY  
 DIVISION OF TAXATION  
 APPROVED AS A TAX MAP PURSUANT TO THE AUTHORITY OF  
 N.J.S.A. 54:1-15 AND N.J.S.A. 54:50-1  
 FOR THE DIRECTOR, DIVISION OF TAXATION  
*Richard A. Schulz*  
 CHIEF, PROPERTY ADMINISTRATION  
 SUPERVISOR, TAXMAPS SECTION, VALUATION AND MAPPING  
 DATE FEB 11 2019 SERIAL NO. 1097

**TAX MAP**  
**TOWNSHIP OF VERNON**  
 SUSSEX COUNTY, NEW JERSEY  
 SCALE: 1"= 100' NOVEMBER, 2017  
**RICHARD A. SCHULZ, P.E., P.L.S.**  
 SPATIAL DATA LOGIC  
 285 DAVIDSON AVENUE  
 SOMERSET, NEW JERSEY, 08873