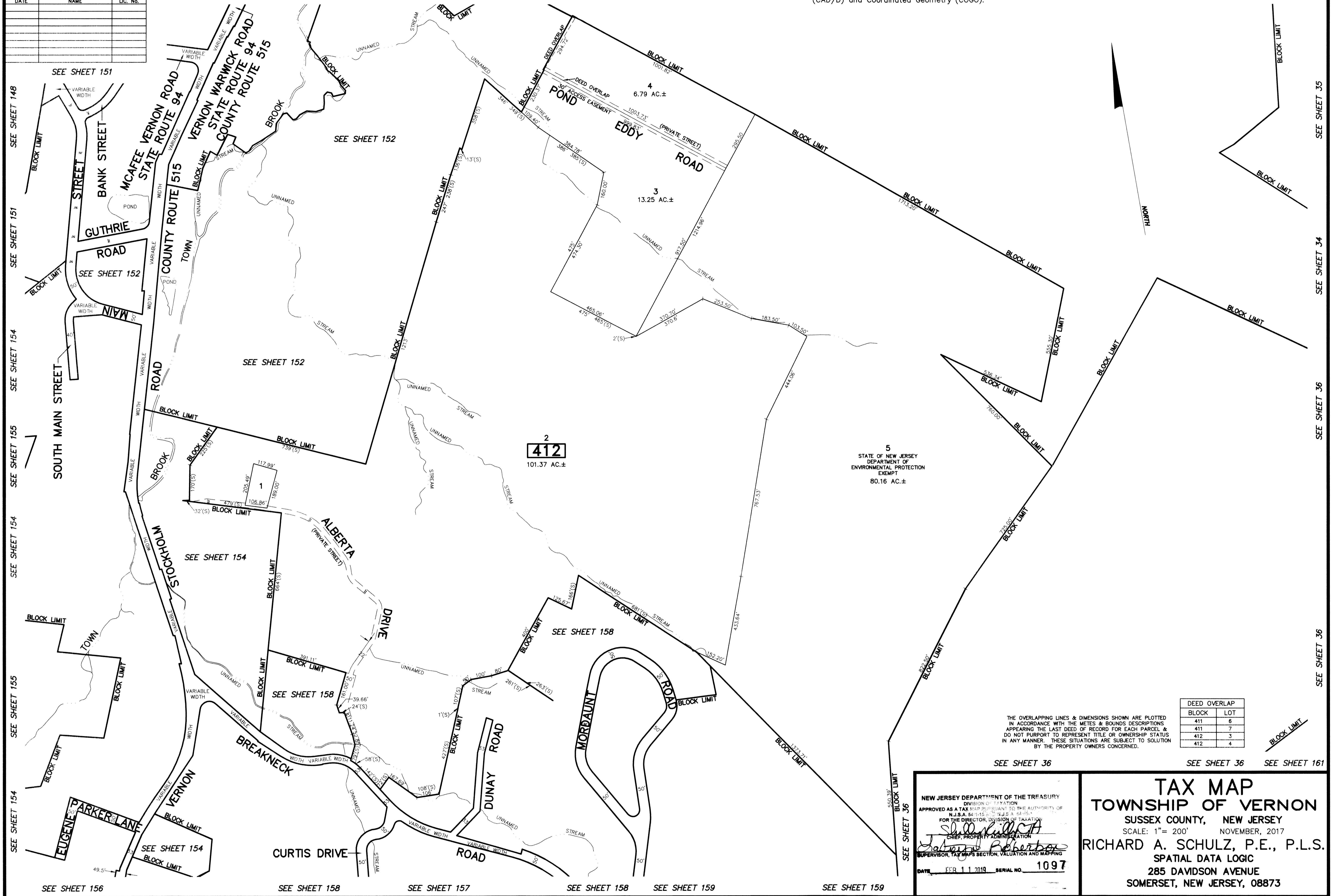


REVISIONS		
DATE	NAME	LIC. No.

SEE SHEET 151 SEE SHEET 151 SEE SHEET 152 SEE SHEET 34 SEE SHEET 34

This map has been drawn using Computer Aided Drafting/Design (CAD/D) and Coordinated Geometry (COGO).

SEE SHEET 34



SEE SHEET 148  
SEE SHEET 151  
SEE SHEET 154  
SEE SHEET 155  
SEE SHEET 154  
SEE SHEET 155  
SEE SHEET 154  
SEE SHEET 154  
SEE SHEET 156

SEE SHEET 35  
SEE SHEET 34  
SEE SHEET 36  
SEE SHEET 36  
SEE SHEET 36  
SEE SHEET 158  
SEE SHEET 157  
SEE SHEET 158  
SEE SHEET 159  
SEE SHEET 159

**412**  
101.37 AC.±

5  
STATE OF NEW JERSEY  
DEPARTMENT OF  
ENVIRONMENTAL PROTECTION  
EXEMPT  
80.16 AC.±

DEED OVERLAP	
BLOCK	LOT
411	6
411	7
412	3
412	4

THE OVERLAPPING LINES & DIMENSIONS SHOWN ARE PLOTTED IN ACCORDANCE WITH THE METES & BOUNDS DESCRIPTIONS APPEARING IN THE LAST DEED OF RECORD FOR EACH PARCEL & DO NOT PURPORT TO REPRESENT TITLE OR OWNERSHIP STATUS IN ANY MANNER. THESE SITUATIONS ARE SUBJECT TO SOLUTION BY THE PROPERTY OWNERS CONCERNED.

SEE SHEET 36 SEE SHEET 36 SEE SHEET 161

NEW JERSEY DEPARTMENT OF THE TREASURY  
DIVISION OF TAXATION  
APPROVED AS A TAX MAP PURSUANT TO THE AUTHORITY OF  
N.J.S.A. 54:1-15 & N.J.S.A. 54:6-1  
FOR THE DIRECTOR, DIVISION OF TAXATION  
*Richard A. Schulz*  
CHIEF, PROPERTY ADMINISTRATION  
*Richard A. Schulz*  
SUPERVISOR, TAX MAPS SECTION, VALUATION AND MAPPING  
DATE: FEB 11 2019 SERIAL NO. 1097

**TAX MAP**  
**TOWNSHIP OF VERNON**  
SUSSEX COUNTY, NEW JERSEY  
SCALE: 1" = 200' NOVEMBER, 2017  
**RICHARD A. SCHULZ, P.E., P.L.S.**  
SPATIAL DATA LOGIC  
285 DAVIDSON AVENUE  
SOMERSET, NEW JERSEY, 08873