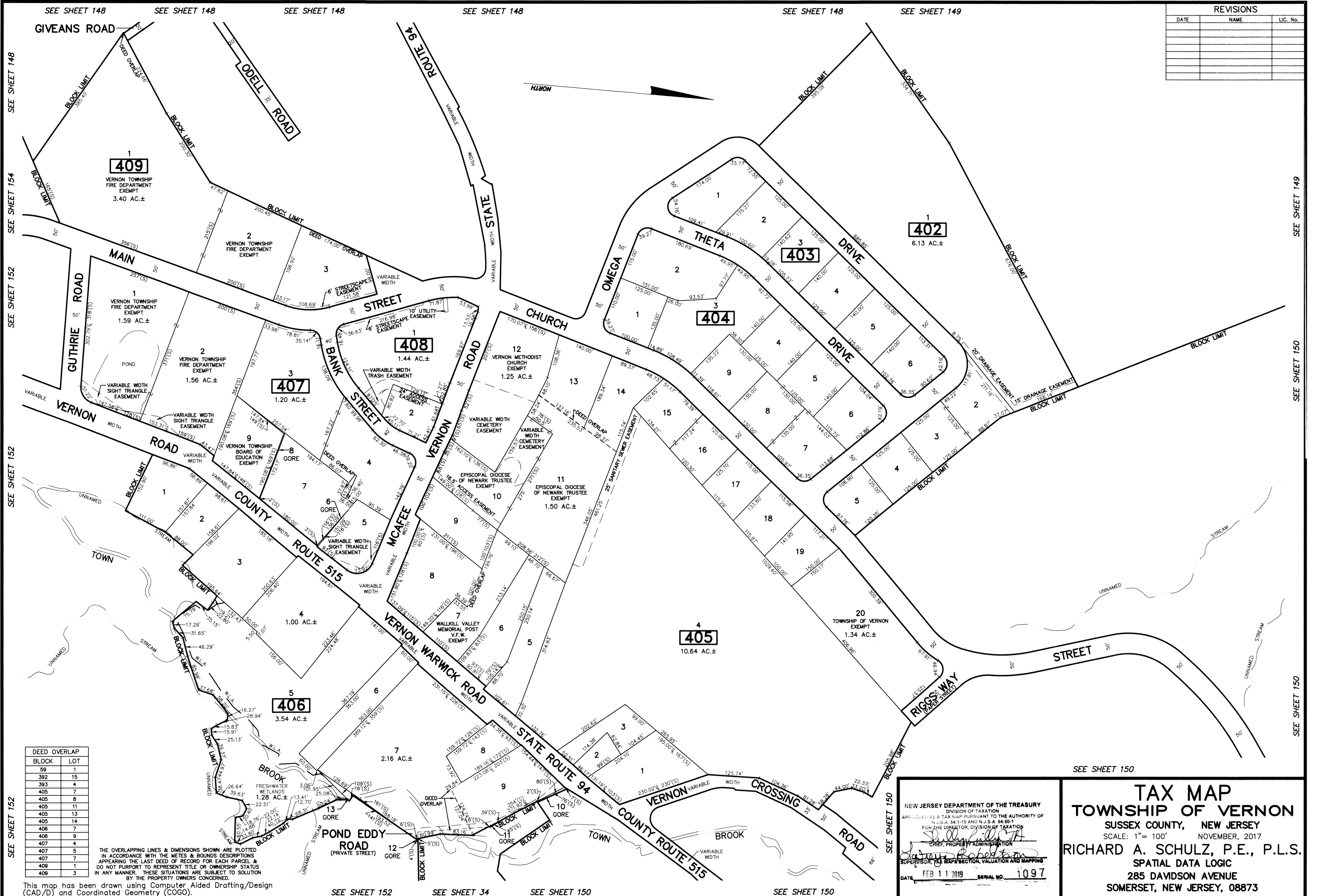


REVISIONS		
DATE	NAME	LIC. No.



BLOCK	LOT
59	1
392	15
393	4
405	7
405	8
405	11
405	13
405	14
406	7
406	9
407	4
407	5
407	7
409	1
409	3

THE OVERLAPPING LINES & DIMENSIONS SHOWN ARE PLOTTED IN ACCORDANCE WITH THE METES & BOUNDS DESCRIPTIONS APPEARING THE LAST DEED OF RECORD FOR EACH PARCEL & DO NOT PURPORT TO REPRESENT TITLE OR OWNERSHIP STATUS IN ANY MANNER. THESE SITUATIONS ARE SUBJECT TO SOLUTION BY THE PROPERTY OWNERS CONCERNED.

This map has been drawn using Computer Aided Drafting/Design (CAD/D) and Coordinated Geometry (COGO).

NEW JERSEY DEPARTMENT OF THE TREASURY
 DIVISION OF TAXATION
 APPROVED AS A TAX MAP PURSUANT TO THE AUTHORITY OF
 N.J.S.A. 54:1-15 AND N.J.S.A. 54:50-1
 FOR THE DIRECTOR, DIVISION OF TAXATION
Robert A. Schuchman
 SUPERVISOR, TAX MAPS SECTION, VALUATION AND MAPPING
 DATE: FEB 11 2019 SERIAL NO. 1097

TAX MAP
TOWNSHIP OF VERNON
 SUSSEX COUNTY, NEW JERSEY
 SCALE: 1" = 100' NOVEMBER, 2017
RICHARD A. SCHULZ, P.E., P.L.S.
 SPATIAL DATA LOGIC
 285 DAVIDSON AVENUE
 SOMERSET, NEW JERSEY, 08873

SEE SHEET 148 SEE SHEET 148 SEE SHEET 148 SEE SHEET 148 SEE SHEET 148 SEE SHEET 149
 SEE SHEET 148 SEE SHEET 154 SEE SHEET 152 SEE SHEET 152 SEE SHEET 150 SEE SHEET 150
 SEE SHEET 152 SEE SHEET 150 SEE SHEET 150 SEE SHEET 150