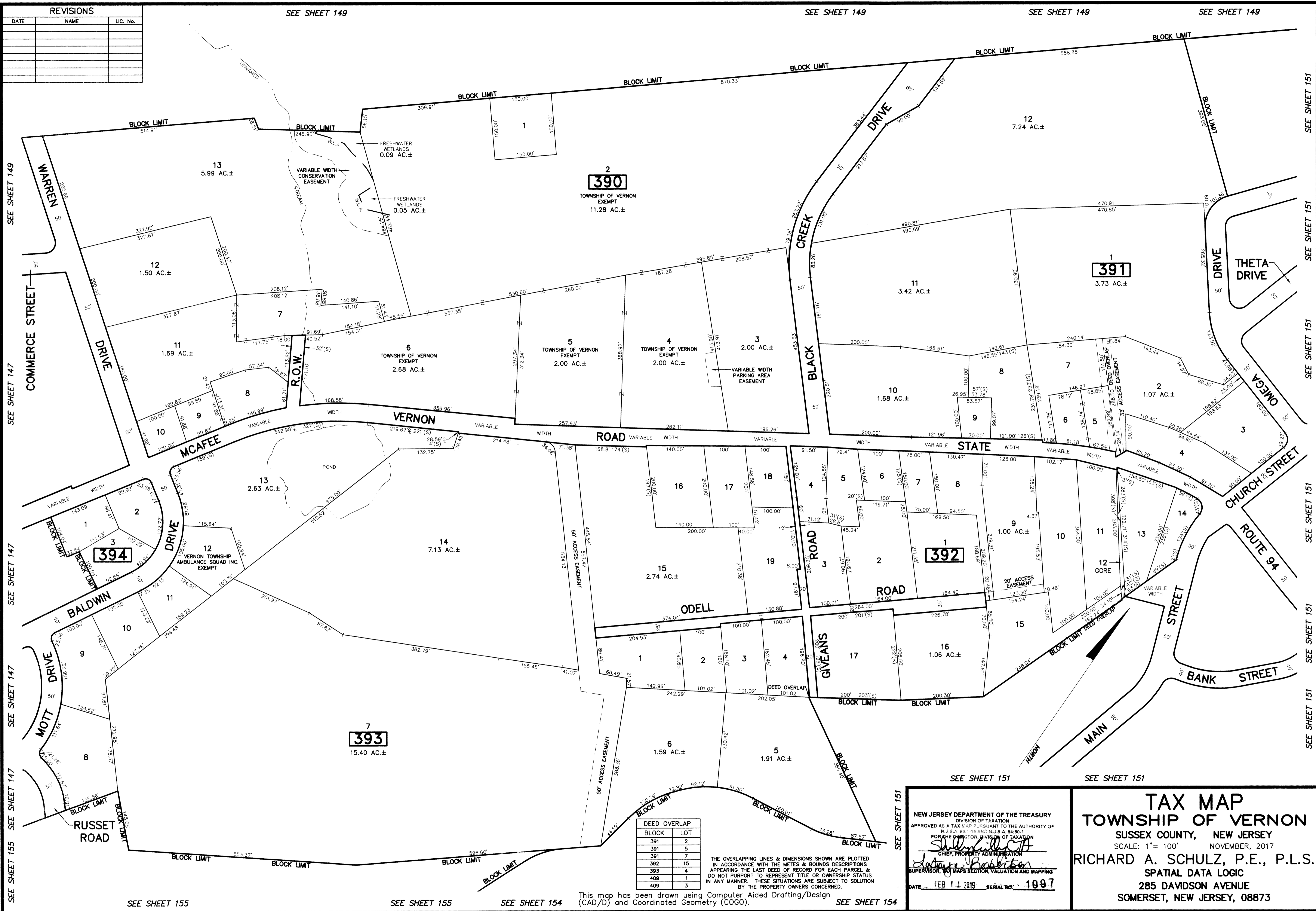


REVISIONS		
DATE	NAME	LIC. No.



SEE SHEET 149  
SEE SHEET 147  
SEE SHEET 147  
SEE SHEET 147  
SEE SHEET 147  
SEE SHEET 155

SEE SHEET 151  
SEE SHEET 151  
SEE SHEET 151  
SEE SHEET 151  
SEE SHEET 151  
SEE SHEET 151

BLOCK	LOT
391	2
391	5
391	7
392	15
393	4
409	1
409	3

THE OVERLAPPING LINES & DIMENSIONS SHOWN ARE PLOTTED IN ACCORDANCE WITH THE METES & BOUNDS DESCRIPTIONS APPEARING IN THE LAST DEED OF RECORD FOR EACH PARCEL & DO NOT PURPORT TO REPRESENT TITLE OR OWNERSHIP STATUS IN ANY MANNER. THESE SITUATIONS ARE SUBJECT TO SOLUTION BY THE PROPERTY OWNERS CONCERNED.

This map has been drawn using Computer Aided Drafting/Design (CAD/D) and Coordinated Geometry (COGO).

NEW JERSEY DEPARTMENT OF THE TREASURY  
DIVISION OF TAXATION  
APPROVED AS A TAX MAP PURSUANT TO THE AUTHORITY OF N.J.S.A. 54:1-13 AND N.J.S.A. 54:50-1  
FOR THE DIRECTOR, DIVISION OF TAXATION  
*Shelly Gillotti*  
CHIEF, PROPERTY ADMINISTRATION  
*John J. Robertson*  
SUPERVISOR, TAX MAPS SECTION, VALUATION AND MAPPING  
DATE: FEB 11 2019 SERIAL NO. 1097

**TAX MAP**  
**TOWNSHIP OF VERNON**  
SUSSEX COUNTY, NEW JERSEY  
SCALE: 1" = 100' NOVEMBER, 2017  
**RICHARD A. SCHULZ, P.E., P.L.S.**  
SPATIAL DATA LOGIC  
285 DAVIDSON AVENUE  
SOMERSET, NEW JERSEY, 08873