

REVISIONS		
DATE	NAME	LIC. No.

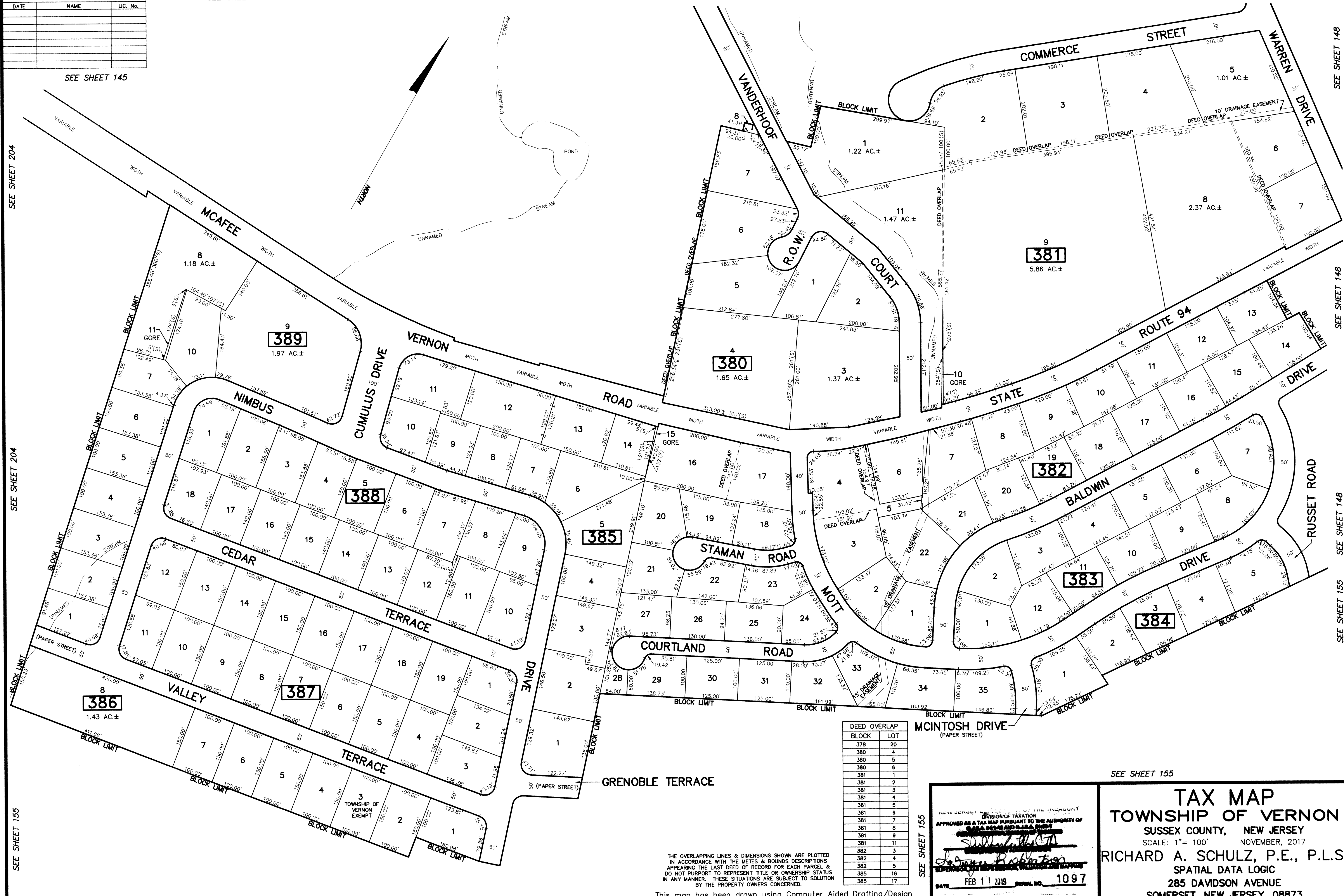
SEE SHEET 145

SEE SHEET 145

SEE SHEET 149

SEE SHEET 149

SEE SHEET 148



SEE SHEET 145

SEE SHEET 204

SEE SHEET 204

SEE SHEET 155

SEE SHEET 148

SEE SHEET 148

SEE SHEET 148

SEE SHEET 155

SEE SHEET 155

SEE SHEET 155

SEE SHEET 155

SEE SHEET 155

DEED OVERLAP	BLOCK	LOT
	378	20
	380	4
	380	5
	380	6
	381	1
	381	2
	381	3
	381	4
	381	5
	381	6
	381	7
	381	8
	381	9
	381	11
	382	3
	382	4
	382	5
	385	16
	385	17

THE OVERLAPPING LINES & DIMENSIONS SHOWN ARE PLOTTED IN ACCORDANCE WITH THE METES & BOUNDS DESCRIPTIONS APPEARING THE LAST DEED OF RECORD FOR EACH PARCEL & DO NOT PURPORT TO REPRESENT TITLE OR OWNERSHIP STATUS IN ANY MANNER. THESE SITUATIONS ARE SUBJECT TO SOLUTION BY THE PROPERTY OWNERS CONCERNED.

This map has been drawn using Computer Aided Drafting/Design (CAD/D) and Coordinated Geometry (COGO).

NEW JERSEY DEPARTMENT OF THE TREASURY  
 DIVISION OF TAXATION  
 APPROVED AS A TAX MAP PURSUANT TO THE AUTHORITY OF  
 STATE STATUTES AND LOCAL ORDINANCES  
*Richard A. Schulz, P.E., P.L.S.*  
 SUPERVISOR OF TAX MAPS, BLOCKS, LOTS AND DISTRICTS  
 DATE FEB 11 2019 SERIAL NO. 1097

**TAX MAP**  
**TOWNSHIP OF VERNON**  
 SUSSEX COUNTY, NEW JERSEY  
 SCALE: 1" = 100' NOVEMBER, 2017  
**RICHARD A. SCHULZ, P.E., P.L.S.**  
 SPATIAL DATA LOGIC  
 285 DAVIDSON AVENUE  
 SOMERSET, NEW JERSEY, 08873