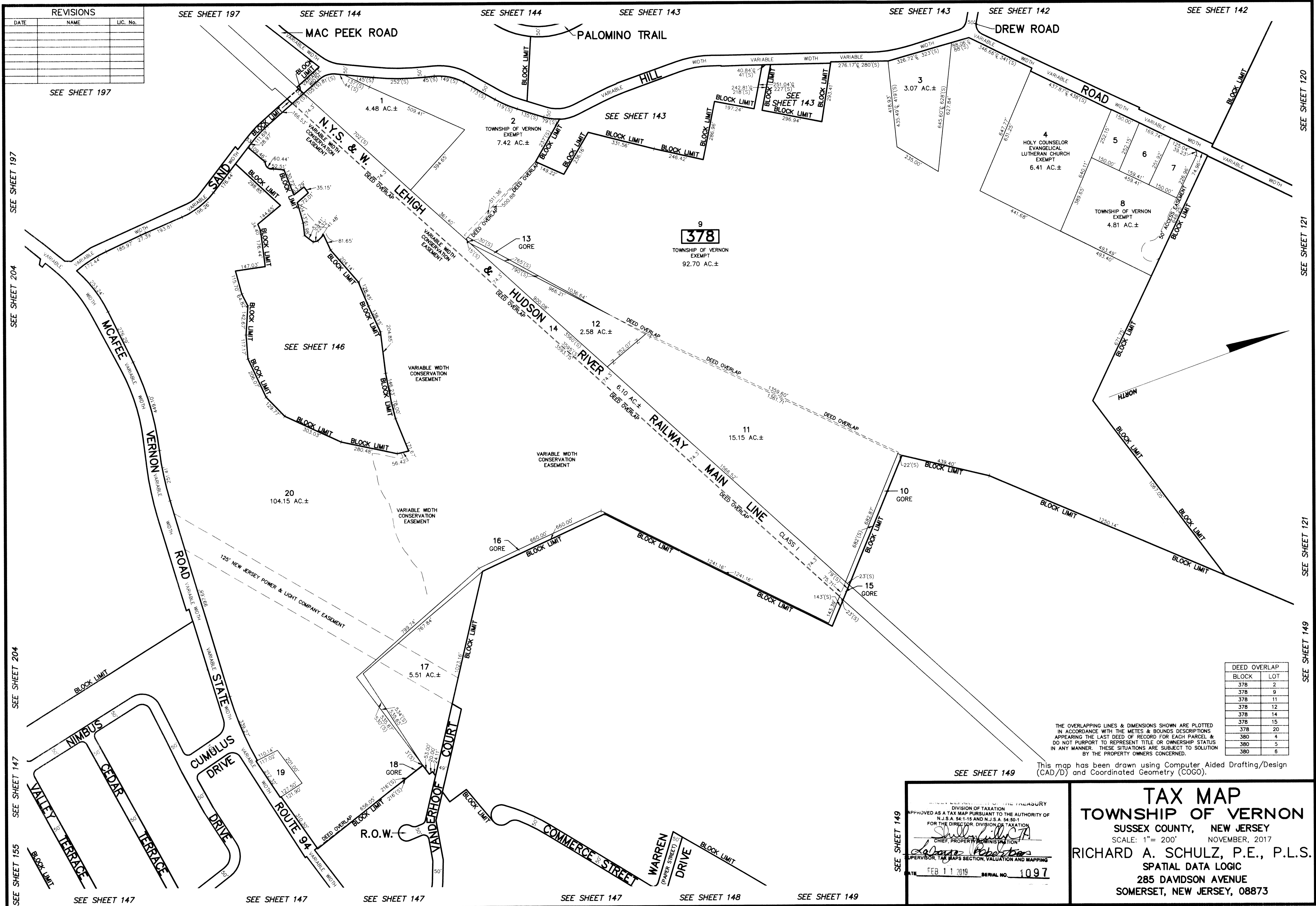


REVISIONS		
DATE	NAME	LIC. No.



SEE SHEET 197

SEE SHEET 197

SEE SHEET 204

SEE SHEET 204

SEE SHEET 147

SEE SHEET 155

SEE SHEET 197

SEE SHEET 144

SEE SHEET 144

SEE SHEET 143

SEE SHEET 143

SEE SHEET 142

SEE SHEET 142

SEE SHEET 120

SEE SHEET 121

SEE SHEET 121

SEE SHEET 149

SEE SHEET 147

SEE SHEET 147

SEE SHEET 147

SEE SHEET 147

SEE SHEET 148

SEE SHEET 149

DEED OVERLAP	
BLOCK	LOT
378	2
378	9
378	11
378	12
378	14
378	15
378	20
380	4
380	5
380	6

THE OVERLAPPING LINES & DIMENSIONS SHOWN ARE PLOTTED IN ACCORDANCE WITH THE METES & BOUNDS DESCRIPTIONS APPEARING THE LAST DEED OF RECORD FOR EACH PARCEL & DO NOT PURPORT TO REPRESENT TITLE OR OWNERSHIP STATUS IN ANY MANNER. THESE SITUATIONS ARE SUBJECT TO SOLUTION BY THE PROPERTY OWNERS CONCERNED.

SEE SHEET 149

This map has been drawn using Computer Aided Drafting/Design (CAD/D) and Coordinated Geometry (COGO).

STATE OF NEW JERSEY
 DIVISION OF TAXATION
 APPROVED AS A TAX MAP PURSUANT TO THE AUTHORITY OF
 N.J.S.A. 94:1-15 AND N.J.S.A. 94:90-1
 FOR THE DIRECTOR, DIVISION OF TAXATION
Shirley L. DeCristo
 CHIEF, PROPERTY ADMINISTRATION
Richard A. Schulz
 SUPERVISOR, TAX MAPS SECTION, VALUATION AND MAPPING
 DATE: FEB 11 2019 SERIAL NO. 1097

TAX MAP
TOWNSHIP OF VERNON
 SUSSEX COUNTY, NEW JERSEY
 SCALE: 1" = 200' NOVEMBER, 2017
RICHARD A. SCHULZ, P.E., P.L.S.
 SPATIAL DATA LOGIC
 285 DAVIDSON AVENUE
 SOMERSET, NEW JERSEY, 08873