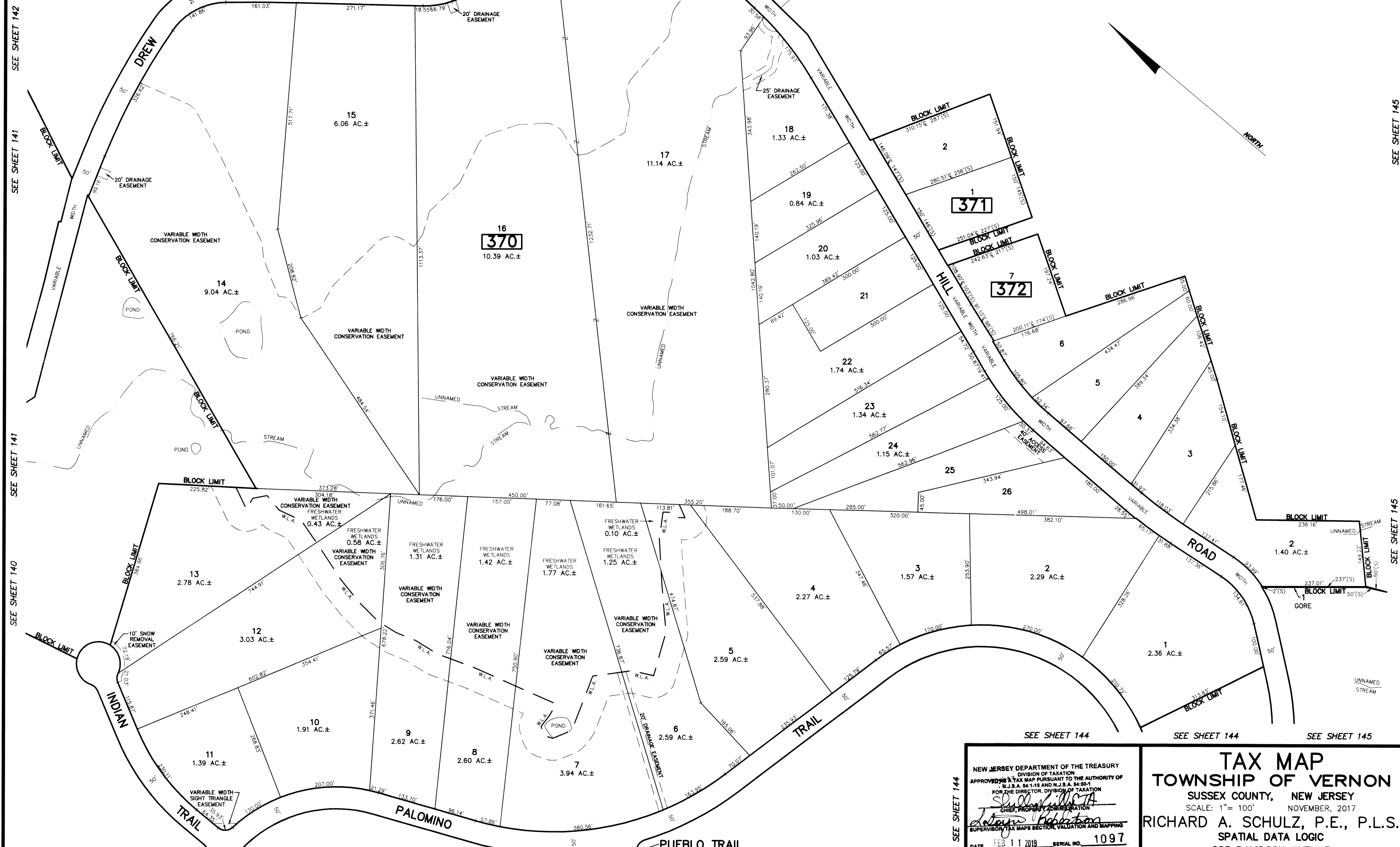


REVISIONS		
DATE	NAME	LIC. No.

SEE SHEET 142

SEE SHEET 145

SEE SHEET 145



SEE SHEET 142
SEE SHEET 141
SEE SHEET 141
SEE SHEET 140
SEE SHEET 140
SEE SHEET 140

SEE SHEET 145
SEE SHEET 145
SEE SHEET 145
SEE SHEET 145
SEE SHEET 145
SEE SHEET 145

NEW JERSEY DEPARTMENT OF THE TREASURY
DIVISION OF TAXATION
APPROVED AS A TAX MAP PURSUANT TO THE AUTHORITY OF
N.J.S.A. 54:1-15 AND N.J.S.A. 54:50-1
FOR THE DIRECTOR, DIVISION OF TAXATION
Richard A. Schulz, P.E., P.L.S.
SUPERVISOR, TAX MAPS SECTION, VALUATION AND MAPPING
DATE: FEB 11 2019 SERIAL NO. 1097

TAX MAP
TOWNSHIP OF VERNON
SUSSEX COUNTY, NEW JERSEY
SCALE: 1" = 100' NOVEMBER, 2017
RICHARD A. SCHULZ, P.E., P.L.S.
SPATIAL DATA LOGIC
285 DAVIDSON AVENUE
SOMERSET, NEW JERSEY, 08873

This map has been drawn using Computer Aided Drafting/Design (CAD/D) and Coordinated Geometry (COGO).