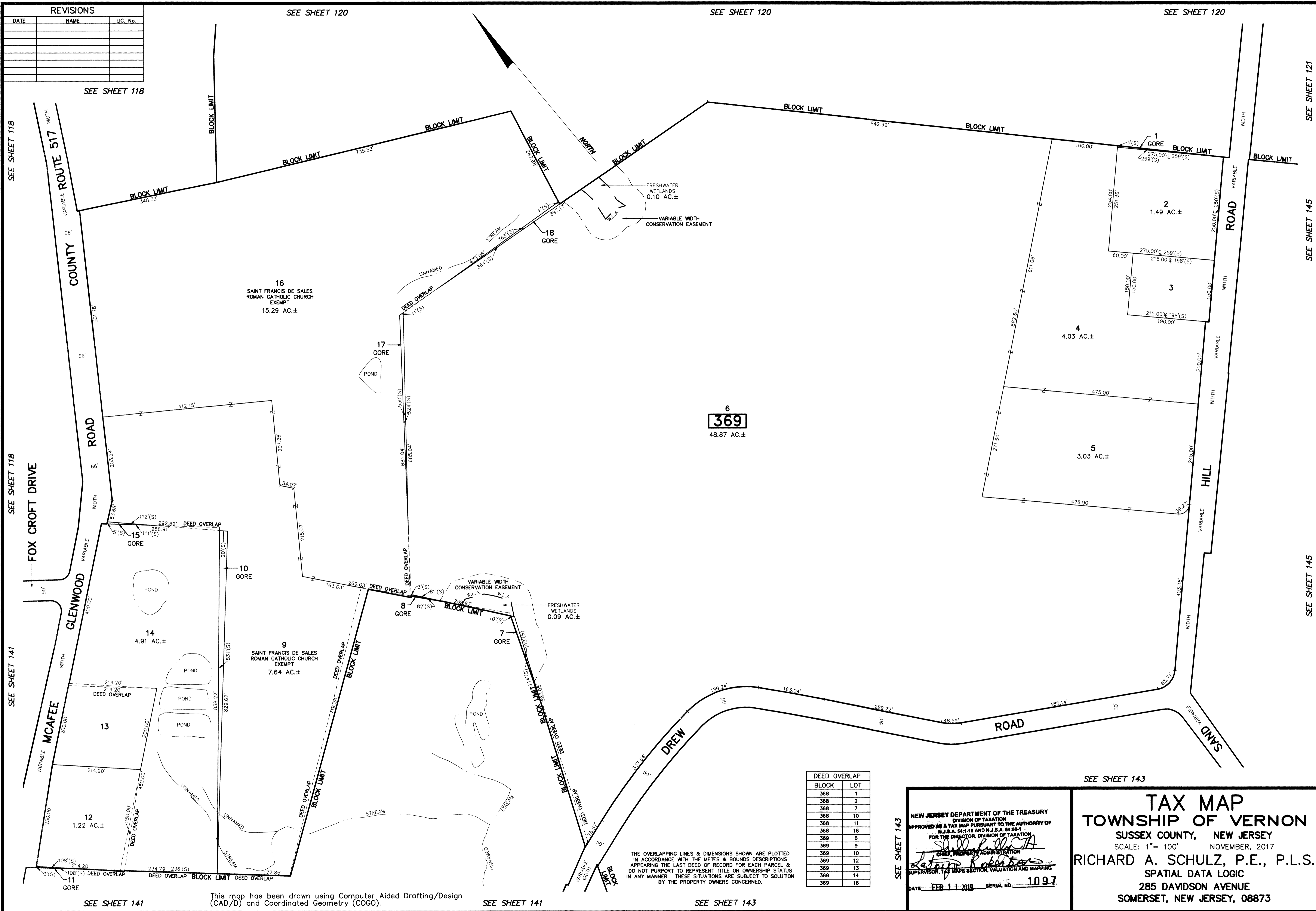


REVISIONS		
DATE	NAME	LIC. No.



SEE SHEET 118

SEE SHEET 120

SEE SHEET 120

SEE SHEET 120

SEE SHEET 118

SEE SHEET 118

SEE SHEET 141

SEE SHEET 121

SEE SHEET 145

SEE SHEET 145

SEE SHEET 141

This map has been drawn using Computer Aided Drafting/Design (CAD/D) and Coordinated Geometry (COGO).

SEE SHEET 141

SEE SHEET 143

DEED OVERLAP	BLOCK	LOT
	368	1
	368	2
	368	7
	368	10
	368	11
	368	16
	369	6
	369	9
	369	10
	369	12
	369	13
	369	14
	369	16

THE OVERLAPPING LINES & DIMENSIONS SHOWN ARE PLOTTED IN ACCORDANCE WITH THE METES & BOUNDS DESCRIPTIONS APPEARING THE LAST DEED OF RECORD FOR EACH PARCEL & DO NOT PURPORT TO REPRESENT TITLE OR OWNERSHIP STATUS IN ANY MANNER. THESE SITUATIONS ARE SUBJECT TO SOLUTION BY THE PROPERTY OWNERS CONCERNED.

SEE SHEET 143

NEW JERSEY DEPARTMENT OF THE TREASURY  
 DIVISION OF TAXATION  
 APPROVED AS A TAX MAP PURSUANT TO THE AUTHORITY OF  
 N.J.S.A. 54-15 AND N.J.S.A. 54-60-1  
 FOR THE DIRECTOR, DIVISION OF TAXATION  
*Shirley M. Smith*  
 CHIEF, PROPERTY ADMINISTRATION  
*Richard A. Schulz*  
 SUPERVISOR, TAX MAPS SECTION, VALUATION AND MAPPING  
 DATE FEB 11 2018 SERIAL NO. 1097

SEE SHEET 143

**TAX MAP**  
**TOWNSHIP OF VERNON**  
 SUSSEX COUNTY, NEW JERSEY  
 SCALE: 1" = 100' NOVEMBER, 2017  
**RICHARD A. SCHULZ, P.E., P.L.S.**  
 SPATIAL DATA LOGIC  
 285 DAVIDSON AVENUE  
 SOMERSET, NEW JERSEY, 08873