

SEE SHEET 138

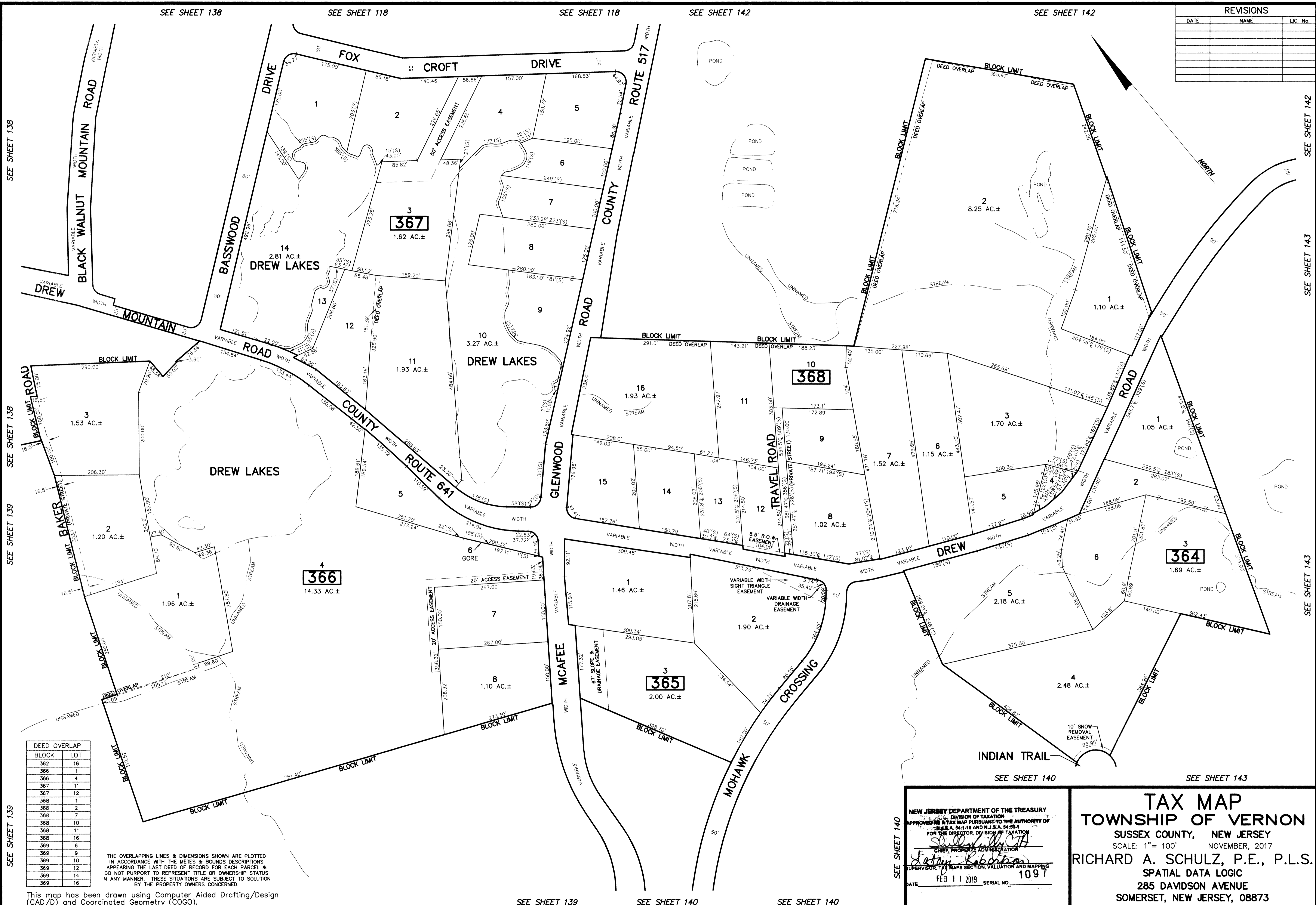
SEE SHEET 118

SEE SHEET 118

SEE SHEET 142

SEE SHEET 142

REVISIONS		
DATE	NAME	LIC. No.



SEE SHEET 138

SEE SHEET 138

SEE SHEET 139

SEE SHEET 139

SEE SHEET 142

SEE SHEET 143

SEE SHEET 143

BLOCK	LOT
362	16
366	1
366	4
367	11
367	12
368	1
368	2
368	10
368	11
368	16
369	6
369	9
369	10
369	12
369	14
369	16

THE OVERLAPPING LINES & DIMENSIONS SHOWN ARE PLOTTED IN ACCORDANCE WITH THE METES & BOUNDS DESCRIPTIONS APPEARING THE LAST DEED OF RECORD FOR EACH PARCEL & DO NOT PURPORT TO REPRESENT TITLE OR OWNERSHIP STATUS IN ANY MANNER. THESE SITUATIONS ARE SUBJECT TO SOLUTION BY THE PROPERTY OWNERS CONCERNED.

This map has been drawn using Computer Aided Drafting/Design (CAD/D) and Coordinated Geometry (COGO).

SEE SHEET 139

SEE SHEET 140

SEE SHEET 140

NEW JERSEY DEPARTMENT OF THE TREASURY  
 DIVISION OF TAXATION  
 APPROVED TAX MAP PURSUANT TO THE AUTHORITY OF  
 N.J.S.A. 54:1-16 AND N.J.S.A. 54:26-1  
 FOR THE DIRECTOR, DIVISION OF TAXATION  
*Shirley J. O'Hara*  
 CHIEF, PROPERTY ADMINISTRATION  
*Richard A. Schulz*  
 SUPERVISOR, TAX MAPS SECTION, VALUATION AND MAPPING  
 DATE FEB 11 2019 SERIAL NO. 1097

**TAX MAP**  
**TOWNSHIP OF VERNON**  
 SUSSEX COUNTY, NEW JERSEY  
 SCALE: 1"= 100' NOVEMBER, 2017  
**RICHARD A. SCHULZ, P.E., P.L.S.**  
 SPATIAL DATA LOGIC  
 285 DAVIDSON AVENUE  
 SOMERSET, NEW JERSEY, 08873