

REVISIONS		
DATE	NAME	LIC. No.

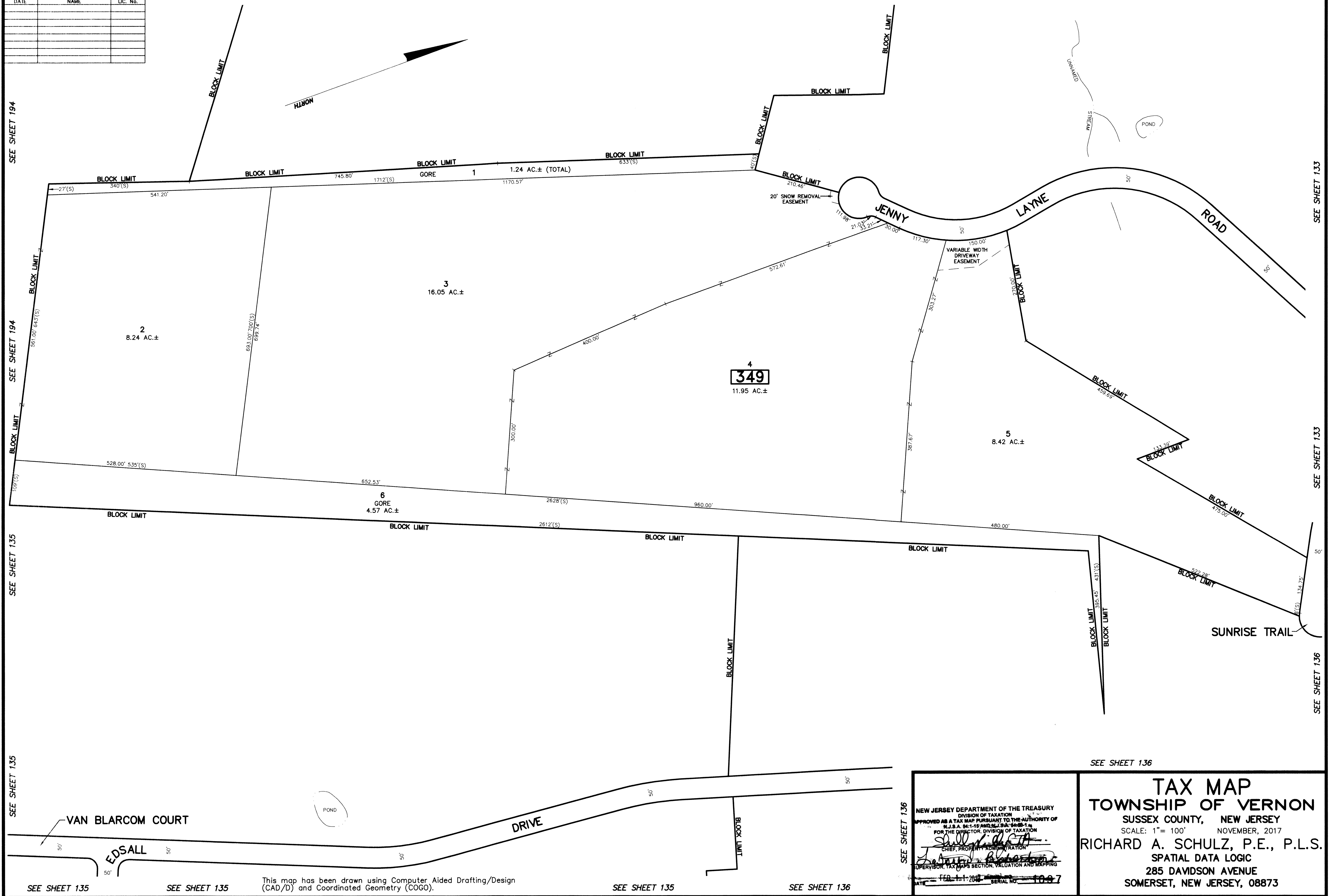
SEE SHEET 194

SEE SHEET 131

SEE SHEET 131

SEE SHEET 133

SEE SHEET 133



SEE SHEET 194

SEE SHEET 194

SEE SHEET 135

SEE SHEET 135

SEE SHEET 133

SEE SHEET 133

SEE SHEET 136

SEE SHEET 136

SEE SHEET 135

SEE SHEET 135

This map has been drawn using Computer Aided Drafting/Design (CAD/D) and Coordinated Geometry (COGO).

SEE SHEET 135

SEE SHEET 136

SEE SHEET 136

NEW JERSEY DEPARTMENT OF THE TREASURY  
 DIVISION OF TAXATION  
 APPROVED AS A TAX MAP PURSUANT TO THE AUTHORITY OF  
 N.J.S.A. 54:1-16 AND N.J.S.A. 54:2B-1a  
 FOR THE DIRECTOR, DIVISION OF TAXATION  
*[Signature]*  
 CHIEF, PROPERTY ADMINISTRATION  
*[Signature]*  
 SUPERVISOR, TAX MAPS SECTION, VALUATION AND MAPPING  
 DATE: FEB 11 2010 SERIAL NO: 1007

**TAX MAP**  
**TOWNSHIP OF VERNON**  
 SUSSEX COUNTY, NEW JERSEY  
 SCALE: 1" = 100' NOVEMBER, 2017  
**RICHARD A. SCHULZ, P.E., P.L.S.**  
 SPATIAL DATA LOGIC  
 285 DAVIDSON AVENUE  
 SOMERSET, NEW JERSEY, 08873