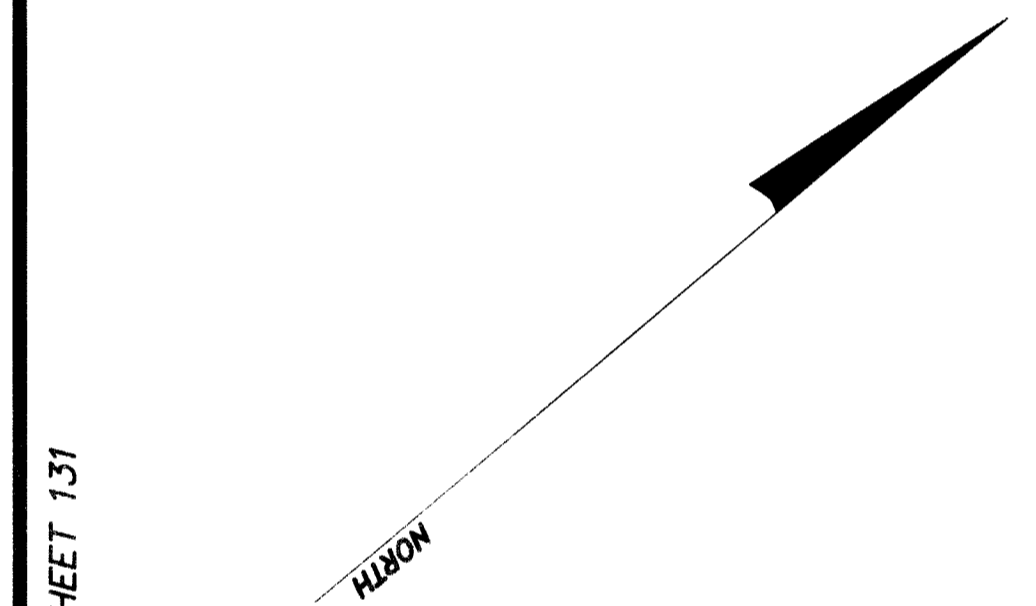
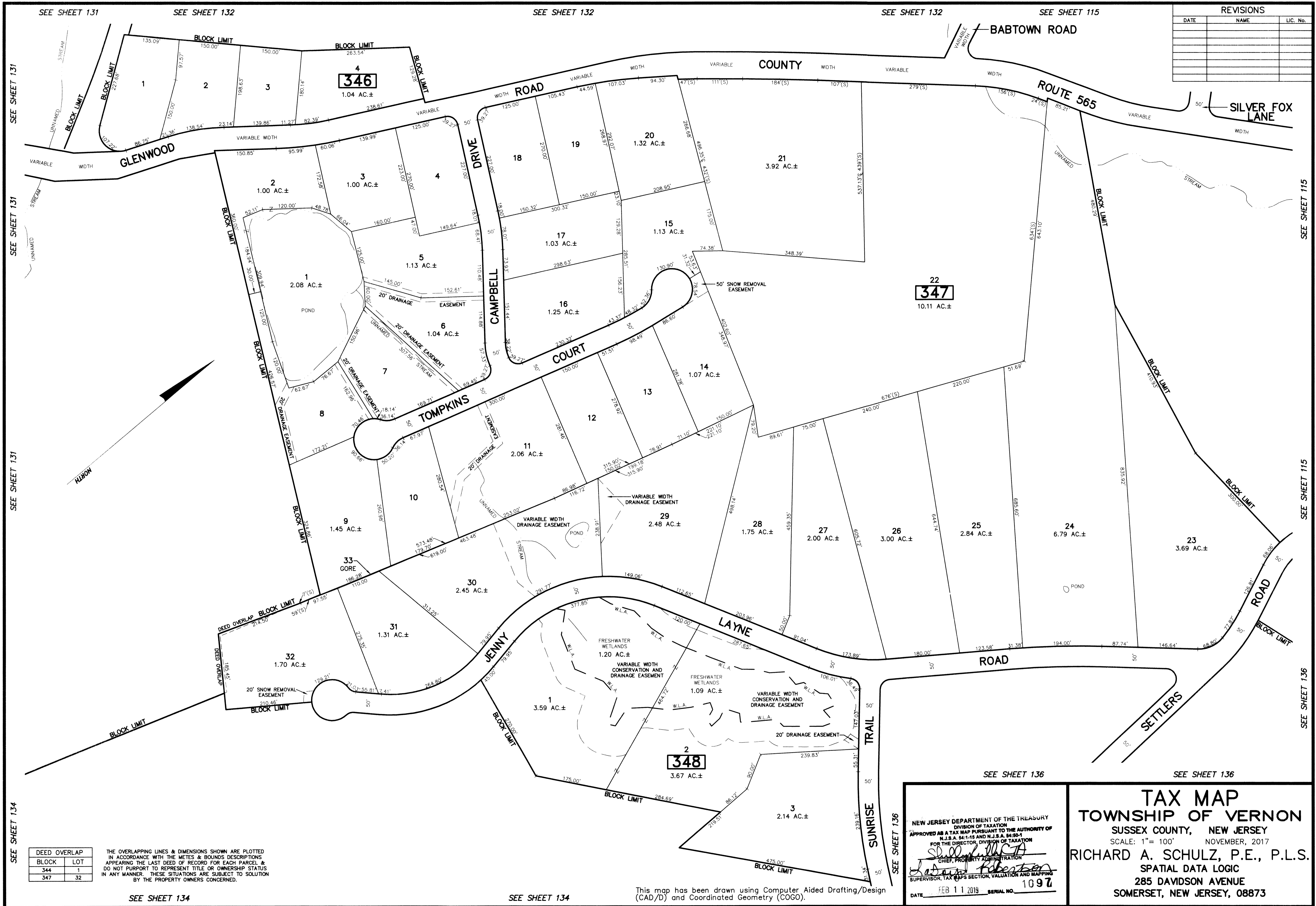


REVISIONS		
DATE	NAME	LIC. No.



SEE SHEET 131  
SEE SHEET 131  
SEE SHEET 131  
SEE SHEET 131  
SEE SHEET 134

SEE SHEET 115  
SEE SHEET 115  
SEE SHEET 115  
SEE SHEET 136  
SEE SHEET 136

DEED OVERLAP	
BLOCK	LOT
344	1
347	32

THE OVERLAPPING LINES & DIMENSIONS SHOWN ARE PLOTTED IN ACCORDANCE WITH THE METES & BOUNDS DESCRIPTIONS APPEARING IN THE LAST DEED OF RECORD FOR EACH PARCEL & DO NOT PURPORT TO REPRESENT TITLE OR OWNERSHIP STATUS IN ANY MANNER. THESE SITUATIONS ARE SUBJECT TO SOLUTION BY THE PROPERTY OWNERS CONCERNED.

SEE SHEET 134

SEE SHEET 134

This map has been drawn using Computer Aided Drafting/Design (CAD/D) and Coordinated Geometry (COGO).

NEW JERSEY DEPARTMENT OF THE TREASURY  
DIVISION OF TAXATION  
APPROVED AS A TAX MAP PURSUANT TO THE AUTHORITY OF  
N.J.S.A. 54:1-15 AND N.J.S.A. 54:9-1  
FOR THE DIRECTOR, DIVISION OF TAXATION  
*[Signature]*  
CHIEF, PROPERTY ADMINISTRATION  
*[Signature]*  
SUPERVISOR, TAX MAPS SECTION, VALUATION AND MAPPING  
DATE FEB 11 2019 SERIAL NO. 1097

**TAX MAP**  
**TOWNSHIP OF VERNON**  
SUSSEX COUNTY, NEW JERSEY  
SCALE: 1" = 100'  
NOVEMBER, 2017  
**RICHARD A. SCHULZ, P.E., P.L.S.**  
SPATIAL DATA LOGIC  
285 DAVIDSON AVENUE  
SOMERSET, NEW JERSEY, 08873