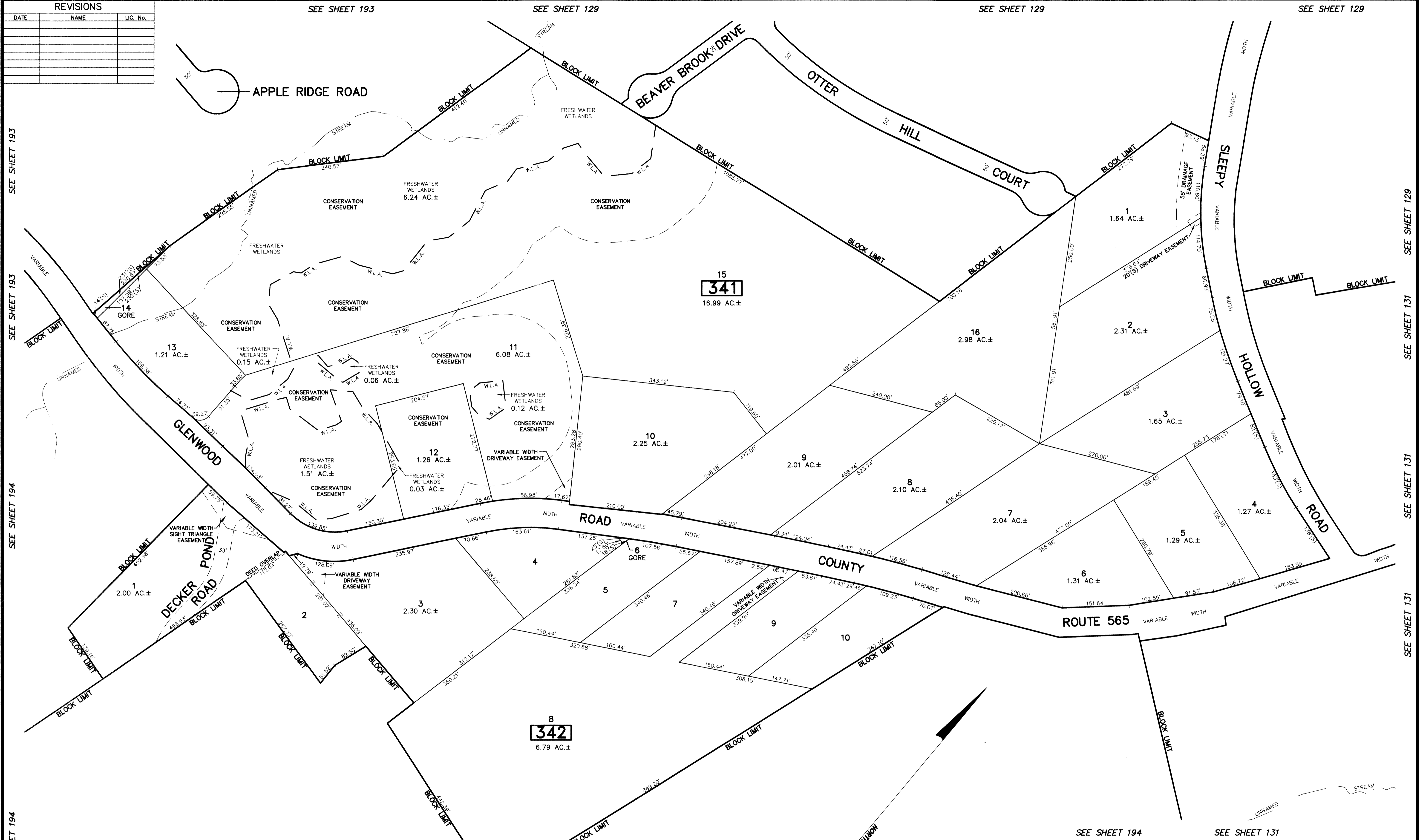


REVISIONS		
DATE	NAME	LIC. No.



SEE SHEET 193  
SEE SHEET 193  
SEE SHEET 194  
SEE SHEET 194  
SEE SHEET 194

SEE SHEET 129  
SEE SHEET 131  
SEE SHEET 131  
SEE SHEET 131

SEE SHEET 194

SEE SHEET 194

This map has been drawn using Computer Aided Drafting/Design (CAD/D) and Coordinated Geometry (COGO).

APPROVED AS A TAX MAP PURSUANT TO THE AUTHORITY OF N.J.S.A. 54:1-16 AND N.J.S.A. 54:50-1  
*Richard A. Schulz*  
 SUPERVISOR, TAX MAPS SECTION, VALUATION AND MAPPING  
 DATE FEB 11 2019 SERIAL NO. 1097

**TAX MAP**  
**TOWNSHIP OF VERNON**  
 SUSSEX COUNTY, NEW JERSEY  
 SCALE: 1" = 100' NOVEMBER, 2017  
**RICHARD A. SCHULZ, P.E., P.L.S.**  
 SPATIAL DATA LOGIC  
 285 DAVIDSON AVENUE  
 SOMERSET, NEW JERSEY, 08873