

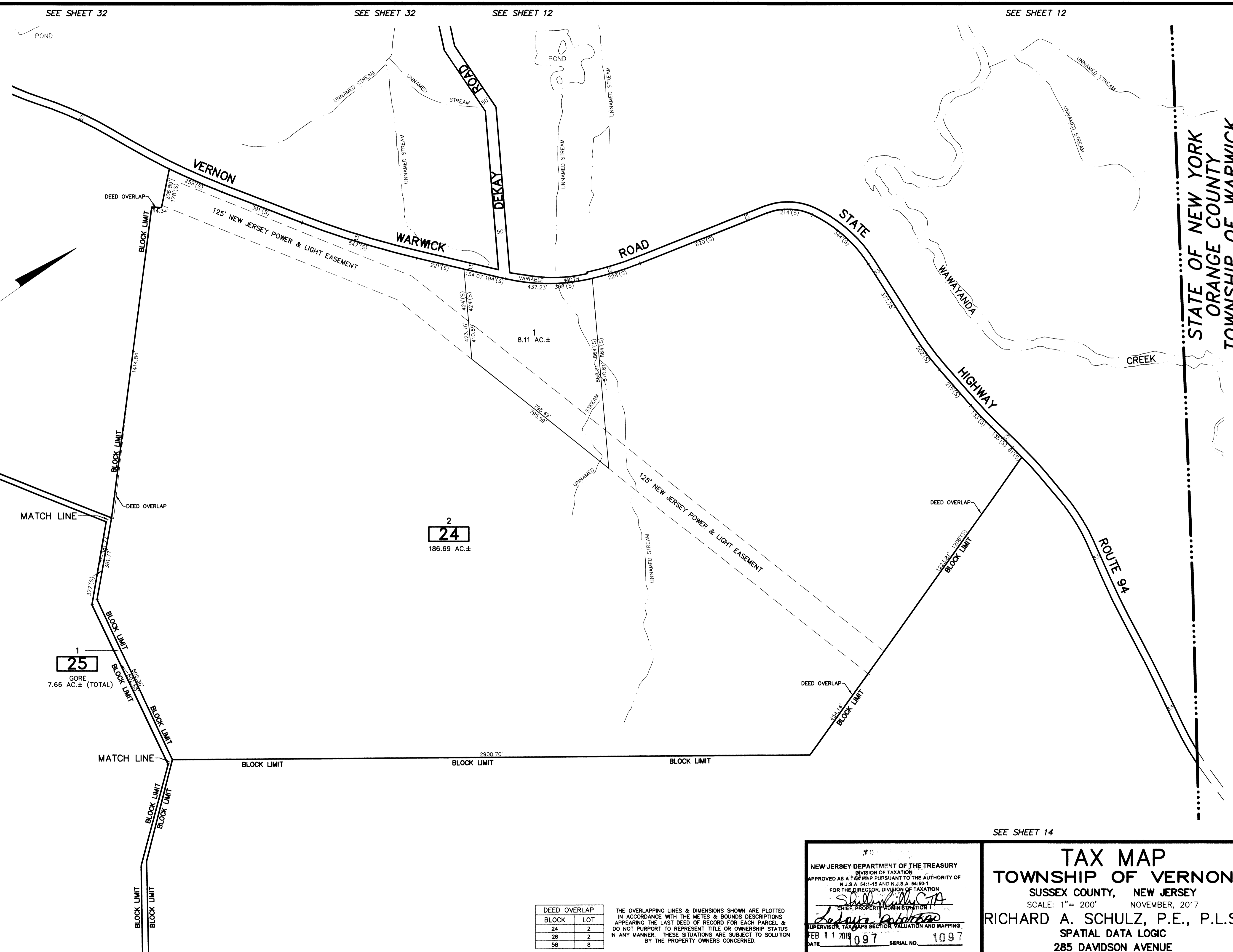
REVISIONS		
DATE	NAME	LIC. No.

SEE SHEET 33

SEE SHEET 33

SEE SHEET 35

SEE SHEET 35



STATE OF NEW YORK  
ORANGE COUNTY  
TOWNSHIP OF WARWICK

1  
**25**  
GORE  
7.66 AC.± (TOTAL)

2  
**24**  
186.69 AC.±

DEED OVERLAP	BLOCK	LOT
	24	2
	26	2
	58	8

THE OVERLAPPING LINES & DIMENSIONS SHOWN ARE PLOTTED IN ACCORDANCE WITH THE METES & BOUNDS DESCRIPTIONS APPEARING THE LAST DEED OF RECORD FOR EACH PARCEL & DO NOT PURPORT TO REPRESENT TITLE OR OWNERSHIP STATUS IN ANY MANNER. THESE SITUATIONS ARE SUBJECT TO SOLUTION BY THE PROPERTY OWNERS CONCERNED.

This map has been drawn using Computer Aided Drafting/Design (CAD/D) and Coordinated Geometry (COGO).

SEE SHEET 35

SEE SHEET 14

SEE SHEET 14

SEE SHEET 14

NEW JERSEY DEPARTMENT OF THE TREASURY  
DIVISION OF TAXATION  
APPROVED AS A TAX MAP PURSUANT TO THE AUTHORITY OF N.J.S.A. 54:1-15 AND N.J.S.A. 54:50-1 FOR THE DIRECTOR, DIVISION OF TAXATION  
*Shirley P. Little, C.T.A.*  
CHIEF, PROPERTY ADMINISTRATION I  
SUPERVISOR, TAX MAPS SECTION, VALUATION AND MAPPING  
DATE FEB 11 2013 SERIAL NO. 1097

**TAX MAP**  
**TOWNSHIP OF VERNON**  
SUSSEX COUNTY, NEW JERSEY  
SCALE: 1"= 200' NOVEMBER, 2017  
RICHARD A. SCHULZ, P.E., P.L.S.  
SPATIAL DATA LOGIC  
285 DAVIDSON AVENUE  
SOMERSET, NEW JERSEY, 08873